



## **Police Department**

# *Campus Safety and Crime Report*

**OCTOBER 2007**

In accordance with the Jeanne Clery Disclosure of Campus Security Policy and Campus Crime Statistics Act of 1998



### **UMKC Police Department**

4825 Troost, Room 214B

Kansas City, MO 64110

(816) 235-1515

[www.umkc.edu/safetyreport](http://www.umkc.edu/safetyreport)

[go.umkc.edu/police](http://go.umkc.edu/police)

**"To Serve and Protect with Integrity, Courage and Respect."**

## MESSAGE FROM THE CHIEF OF POLICE

### **Welcome to the University of Missouri-Kansas City!**

The University of Missouri-Kansas City is committed to providing the members of the campus community and visitors with the safest and most secure environment possible. Each year the UMKC Police Department makes available the Annual Campus Safety and Crime Report. This report is published to inform the faculty, staff, students and citizens of our crime statistics, policies and procedures concerning alcohol, drugs, sexual assault and general safety on the University of Missouri-Kansas City campus.

Additional copies of this report may be obtained by contacting our office at (816) 235-1515, by stopping by our Communications Office in the Police Department at 4825 Troost, room 214B, or you may access this report at: [www.umkc.edu/safetyreport](http://www.umkc.edu/safetyreport)

All of the police officers employed by UMKC are certified State Peace Officers and have the jurisdictional responsibilities for all crimes and incidents that occur on our campus. Our department recently completed the lengthy process to become nationally accredited by the Commission on Accreditation for Law Enforcement Agencies, Inc.

I ask you for your help and support to make this a safer and more secure community by being our “extra eyes and ears.” Never hesitate to call when you believe that a crime has occurred. Without your report we won’t know that a crime has occurred and we cannot identify crime trends. I also ask you to become educated so as not to become a victim of crime.

As the Chief of Police for the University of Missouri-Kansas City, I look forward to working with our community to address the challenges associated with the academic community. I can assure you that all members of UMKC-PD are committed to being partners with our community and providing excellent service.

Scott Shelton

## **About this Report**

In 1990, the federal “Crime Awareness and Campus Security Act” was enacted requiring universities and colleges to:

- Publish and distribute an annual campus security report that contains the most recent calendar year and the three preceding calendar years of campus crime statistics, policy statements and program descriptions, and procedures to be followed in sex offenses.
- Inform prospective students and employees about the report.
- Provide timely notice to the campus on crimes that are considered threats to safety.

In 1998 this act became known as the “Jeanne Clery Disclosure of Campus Security Policy and Campus Crime Statistics Act,” through oversight of the United States Department of Education.

This report describes security practices and procedures at the University of Missouri-Kansas City and lists crime statistics for the most recent calendar year and the two preceding calendar years. Each year the University disseminates information on the status of campus security to all current students and employees. Upon request, the report will be provided to persons who request a copy. This report can also be accessed by going to the UMKC Police webpage (<http://www.umkc.edu/adminfinance/police/csr.asp>) and following the “2007 Crime Report” link.

The 2007 edition of the Campus Safety and Crime Report lists yearly statistics for the crimes of murder, sexual assault, robbery, aggravated assault, burglary, assault, motor vehicle thefts, alcohol, drug, weapons, and “hate crime” offenses. These crimes are defined in this report.

The administrative section of the UMKC Police Department has prepared this report using internal crime reports and other statistical data and information. In addition, data and information is supplied by the UMKC Division of Student Affairs, Deans, Directors, Department Heads and the Kansas City, Missouri Police Department. I hope that you will take some time to review the information contained in the report and if you have questions please do not hesitate to contact us.

## Table of Contents

<b>Mission and Purpose</b>	<b>6</b>
<b>University Police: Your Community Policing Agency</b>	<b>7</b>
<b>Policy for Reporting the Annual Disclosure of Crime Statistics</b>	<b>8</b>
<b>Policy on Crime and Incident Reporting</b>	<b>8</b>
<b>Timely Warning Policy</b>	<b>9</b>
<b>Crime Prevention</b>	<b>10</b>
<i>Your Role in Preventing Crime</i> .....	10
<i>Prevention Tips</i> .....	10
<i>Crime Prevention Presentations and Training</i> .....	10
<b>Sexual Assault Policy Statement</b>	<b>11</b>
<i>Registered Sex Offender Information</i> .....	12
<i>Sexual Harassment Policy</i> .....	12
<b>Alcohol and Drugs</b>	<b>13</b>
<i>Alcohol Policy</i> .....	14
<i>Drug Policy</i> .....	14
<i>Alcohol or Substance Abuse Assistance</i> .....	14
<b>Campus Facilities Access</b>	<b>14</b>
<b>Annual Crime Statistics</b>	<b>19</b>
<b>2006 Crime Statistics</b>	<b>20</b>
<b>2005 Crime Statistics</b>	<b>22</b>
<b>2004 Crime Statistics</b>	<b>24</b>
<b>2003 Crime Statistics</b>	<b>26</b>
<b>2002 Crime Statistics</b>	<b>28</b>
<b>CRIME ON CAMPUS COMPARISON</b>	<b>30</b>
<b>Crime Definitions</b>	<b>31</b>

## The University of Missouri-Kansas City

The University of Missouri-Kansas City was spawned by a city built at the origin of the Oregon and Santa Fe trails. These roadways to the west began at Old Westport, just a few miles from the present UMKC campus.

In the 1890s, there was talk of founding a university in Kansas City because of the city's growth, but it was not until the 1920s that talk turned to action. In the postwar decade, the chamber of commerce appointed a committee to consider the possibility of a university in Kansas City. A board of trustees comprising leading businessmen was established and the board proceeded cautiously with its plans.

In 1929, a charter for the University of Kansas City was granted. The dream became a reality when William Volker, a local philanthropist for whom the 93-acre Volker campus is named, presented the board with the 40-acre nucleus of the present campus site in Kansas City's Rockhill district. Volker also provided funds to purchase the former private home of Walter S. Dickey, a wealthy Kansas City manufacturer. The ivy-covered stone mansion, now known as Scofield Hall and situated in the center of the campus, was the fledgling university's first main building.

With a charter and a campus site, the Board of Trustees started a citywide drive for funds. In 1933, the University of Kansas City announced that classes would begin in October. A faculty of 17 was hired, and on Oct. 2, 1933, 264 students were enrolled. The University of Kansas City, a private, independent university, had begun.

On July 25, 1963, the University of Kansas City became a part of the University of Missouri System, joining three other campuses located in Columbia, Rolla and St. Louis. At that time, the Board of Trustees of the University of Kansas City transferred assets estimated at \$20 million to the Board of Curators of the University of Missouri.

The University's name was changed to University of Missouri-Kansas City and since 1963 the Kansas City campus has experienced steady growth while expanding on urban connections. The total number of students taking classes at UMKC is now more than 14,200 students.

In addition to the Volker campus, UMKC operates the Hospital Hill campus, located in midtown Kansas City, Mo. This campus is adjacent to Truman Medical Center, UMKC's primary public teaching hospital, and is home to the UMKC School of Medicine, School of Dentistry, the School of Nursing, the School of Pharmacy and the Institute of Human Development.

# UMKC Police Department

## Mission and Purpose

---

**The fundamental mission of the University Police force is to provide the leadership and professional support required to sustain and improve the University System's efforts to develop a balanced police-University community effort against any lawlessness or disorderly conduct which could interfere with the general missions of the University System. As such, the UMKC Police Department is an essential university partner promoting a safe and orderly learning environment and enhanced quality of life with a reduction of crime, social disorder and fear of crime.**

## Values and Guiding Principles

---

We are committed to the pursuit of excellence in our delivery of police services.

We recognize our interdependent relationship with the community we serve and will remain sensitive to the community's priorities and needs.

We collaborate in the development of innovative and responsive problem solving.

We are enriched by the diversity of our community and respect and protect the rights and dignity of all persons.

We conduct all citizen contacts with courtesy and compassion, as we are dedicated to providing the highest level of service with integrity, fairness and professionalism.

We serve with courage and pride in maintaining the public trust by upholding the highest ethical standards.

To promote organizational growth we are committed to assisting in the development of the employee's professional and personal knowledge, skills and abilities, in an atmosphere where the work is fun, challenging and satisfying.

## **University Police: Your Community Policing Agency**

Safety and security is coordinated by the University Police, located in 4825 Troost Building, room 214B. Missouri Revised Statutes recognize UMKC officers as police officers in the State of Missouri, providing the officers with full law enforcement authority within the State of Missouri. UMKC police officers are commissioned under the authority of the University of Missouri Board of Curators and Missouri Peace Officer Standards and Training (POST).

UMKC officers have the same power and authority as any other police officer in the State. Officers are required to maintain the same skills, training, and qualifications regardless of jurisdiction. In many cases, our officers receive extensive specialized training to better serve the University community.

UMKC employs 27 police officers, 9 security guards, and 6 communications operators. All police officers are graduates of the Kansas City Police Academy or the Western Missouri Police Academy where they receive more than 1000 hours of law enforcement training. The academy training consists of approximately seven months of instruction covering Constitutional Law, Missouri Statutory Law, Traffic Law, Criminal Investigation, First Aid, Human Behavior, Juvenile Justice and Procedures, Patrol, Report Writing, Traffic Investigation, Defensive Tactics, Driver Training, Firearms, and Physical Training. Successful completion of the academy is a prerequisite for continued employment. All officers are then licensed through the Missouri Department of Public Safety with a Class A license and have the full authority as any police officer. After completion of the police academy new officers are further developed in an on-the-job 10-week field-training program with a field-training officer as their coach/mentor. Throughout the year, in-service training and other appropriate training using outside agencies and organizations are conducted.

The UMKC Police Department has primary law enforcement jurisdiction on the campus and associated University properties. As with any other law enforcement agency, it is the duty of the University Police officer to keep the peace and maintain order. We strive to maintain an environment that is conducive to pursuit of academic endeavors.

We are organized as any other police agency, and are comprised of a uniformed patrol division, detective division, crime prevention unit, administrative section and a civilian support staff consisting of communications officers (commonly referred to as radio dispatchers), clerical staff and security guards.

University police officers conduct foot, vehicular and bicycle patrols on campus and in the residence community 24-hours a day, throughout the year. Officers are responsible for reporting and investigating crimes and traffic accidents, responding to medical emergencies, enforcement of state laws and local ordinances, and all other incidents requiring police assistance. Criminal cases are forwarded to the Kansas City Prosecuting Attorney's Office or the Jackson County Prosecuting Attorney's Office for prosecution. The department enforces the University parking rules and regulations as well as city traffic regulations on adjacent and through streets.

***We are your "hometown police department" with authority and responsibilities as any other law enforcement agency.***

## **Relationships with Other Law Enforcement Agencies**

The University of Missouri-Kansas City Police Department maintains a close working relationship with the Kansas City Missouri Police Department, Jackson County Sheriff's Department, Jackson County Prosecuting Attorney Office, and all metropolitan and Missouri law enforcement agencies. Our cooperative mutual aid agreement with the Kansas City Police Department enables us to work together on a daily basis and in unusual situations while fostering an air of cooperation.

UMKC-PD has direct computer access to the Missouri Uniform Law Enforcement System (MULES), KC Automated Law Enforcement Response Team (ALERT), as well as the National Crime Information Center (NCIC) in Washington, D.C. Computerized police records allow UMKC-PD to share information with other law enforcement agencies.

During multi-agency emergency operations, a metro-area radio frequency has been established to permit law enforcement and emergency services to effectively communicate and coordinate emergency operations.

Due to the complexity of many investigations, it is important for UMKC-PD to work closely with all law enforcement and criminal justice agencies. We are pleased that our working relationships at the federal, state, and local levels continue to serve the university community.

## **Safety on Campus**

### **Policy for Reporting the Annual Disclosure of Crime Statistics**

Campus crime, arrest and referral statistics include those reported to the UMKC Police, designated campus officials (including but not limited to directors, deans, department heads, advisors to students/student organizations, athletic department), and local law enforcement agencies. Each entity provides updated information on their educational efforts and programs to comply with the Act. Missouri law requires prompt, mandatory reporting to the local law enforcement agency by health care practitioners (such as those at the student counseling and health center) when they provide medical services to a person they know or reasonably suspect is suffering from wounds inflicted by a firearm or is a result of assault or abusive conduct. Department of Counseling, Health and Testing staff inform their clients of the procedures to report crime to the University Police on a voluntary basis should they feel it is in the best interest of the client.

Each year, all students, faculty and staff are notified electronically; that is, by mass e-mail, posting on UMKC home web site, and "UMKC Announcements," that provide the web site to access this report. Additionally, faculty and staff receive similar notification in the mail. Copies of the report may also be obtained at the University Police Department located at 4825 Troost, room 214B, or by calling (816) 235-1515. All prospective employees may obtain a copy in this manner and information about the availability of this report is included in the UMKC employment application.

### **Policy on Crime and Incident Reporting**

The University of Missouri-Kansas City Police Department is the primary agency for reporting and investigating all crimes that occur on University property regardless of how seemingly insignificant the incident. It is the policy of the UMKC Police Department to encourage prompt reporting of crimes, potential criminal actions and any emergency on campus, including medical

and fire emergencies, directly to the UMKC Police. This includes prompt reporting of all incidents that could result in injury to or death of persons; damage to, destruction, theft or disappearance of University property (including money and securities) or property of others. These incidents are reported in order that causes may be determined and corrective measures taken to improve safety and preserve University assets.

To report a crime or emergency on campus, call **UMKC-PD by dialing 9-1-1** from any telephone on campus. Also, emergency phones are distinctively marked and have a blue light on top, and are located throughout campus. Campus elevators are also equipped with emergency phones. Upon receipt of the call, a University police officer will be immediately dispatched to the site to meet with the victim or witness to gather information and prepare an official report and have the authority to make arrests.

Crime and incident reports may be made 24 hours a day by calling **9-1-1 for emergencies**, or **235-1515 for non-emergencies**, or coming to UMKC-PD. Priority is given to reports of incidents that threaten life or safety of people, the security of the property and the peace of the community.

UMKC-PD is located on the corner of Troost and Volker, room 214B of 4825 Troost Building and is accessible 24 hours a day.

Each day incidents from the previous day are made available on an incident log located in the Communications Office of the Police Department at 4825 Troost, room 214B. The incident log is distributed to key staff, other law enforcement agencies, and, if necessary, to the prosecuting attorney.

### **Confidential Reporting Procedures**

If you are the victim of a crime and do not want to pursue action within the University system or the criminal justice system, you may still want to consider making a confidential report. With your permission, the UMKC Police Department can file a report on the details of the incident without revealing your identity. The purpose of a confidential report is to comply with your wish to keep the matter confidential, while taking steps to ensure the future safety of yourself and others. With such information, the University can keep an accurate record of the number of incidents involving students, employees and visitors; determine where there is a pattern of crime with regard to a particular location, method, or assailant; and alert the campus community to potential danger. Reports filed in this manner are counted and disclosed in the annual crime statistics for the institution.

### **Timely Warning Policy**

In addition to the yearly statistics provided in this booklet and on our web site, our department will make periodic reports, or Crime Alerts, to the campus community of recent crimes that may affect the quality of life in the campus area. These reports may include crime prevention recommendations and are intended to raise awareness regarding criminal activity so that the community can increase or implement personal safety strategies.

Crime Alerts may be disseminated via campus e-mail, voice mail, posted in selected offices on campus, including student public areas, residence halls, and campus building liaisons, U-News newspaper, and the UMKC Police website at: [www.umkc.edu/adminfinance/police](http://www.umkc.edu/adminfinance/police)

### **Crime Prevention**

The University Police Department makes every effort to be proactive to reduce and prevent crime. Some efforts are:

- Emergency Telephones Located on the Parking Lots
- 24-Hour Preventative Patrol
- Burglar Alarms in Key Areas
- Property Engraving Program
- Crime Prevention Seminars
- Crime Prevention Materials
- Bicycle Registration

### ***Your Role in Preventing Crime***

A high percentage of campus crimes are incidents of opportunity. Often, faculty, staff and students unknowingly contribute to crimes of opportunity by placing themselves or their property at risk. Prevention efforts can be effective in reducing the opportunities for criminal activity. You play a key role in crime prevention efforts. Be cautious, careful, and alert to your own safety and protective of your possessions and University property.

In addition to preventing crime, considerable effort is devoted to crime intervention.

### ***Prevention Tips***

- Do not hesitate to call police when confronted.
- Keep your residence room locked.
- At night, walk in groups of at least two and stay on main walkways.
- Familiarize yourself with the location of emergency phones.
- When parking, remove valuables from view and lock your vehicle.
- Engrave your valuables with your driver's license number and record serial numbers.
- Make copies of credit cards and other valuables in your wallet.
- Report all losses to University Police immediately.
- Stay in control. Do not allow the abuse of alcohol or other substances to put you at risk.
- Do not leave personal property unattended.
- Be aware of your surroundings and what is going on around you.
- Do not hesitate to report suspicious individuals or activity to the University Police.

### ***Crime Prevention Presentations and Training***

In 2006, some of the crime prevention programs and workshops presented by the University Police included:

- New student orientations
- Parent orientation programs
- Transfer student orientations
- New faculty orientation

- Special workshops on personal safety for UMKC' s Human Resources Office
- Fraternity and sorority programs
- Men and women residence hall members (given every year in the first two weeks of school)
- Alcohol abuse programs
- Student Activities' fairs
- Residence Hall Resident Assistant's Workshop
- RAD System, Rape Aggression and Defense Workshops

The UMKC Police presented more than two-dozen crime prevention and personal safety workshops and seminars, and will conduct presentations at any time upon request or on a regularly scheduled basis.

*Please remember security is everyone's business.*

### **Sexual Assault Policy Statement**

UMKC recognizes that sexual assault is a serious issue, and will not tolerate acts of sexual assault on campus. The University will investigate all allegations of sexual assault and take appropriate disciplinary, criminal, or legal action, with prior consent of the victim.

As soon as convenient, the victim of a sexual assault should report the incident to the **University Police, 9-1-1, or 235-1515**. If the sexual assault occurred off campus, the victim may still call UMKC Police. If the victim chooses, UMKC Police will notify the appropriate agency to handle the investigation. The victim should make every attempt to preserve any physical evidence of the assault. This may include a voluntary medical exam, not showering, or disposing of any damaged clothing, or other items that are present after/during the assault. Victims are encouraged to call any law enforcement agency by dialing 9-1-1 after a sexual assault for crime investigation, referral or transport for medical treatment, and referral crisis counseling and legal advocacy.

The University Police, with the victim's consent, will immediately conduct a criminal investigation of a reported sexual assault. They will also contact a crisis-counselor, if the victim wishes. Disciplinary actions may be imposed on recognized individual students, student organizations, and/or university faculty and staff found responsible for a sexual assault. University sanctions following campus disciplinary procedures depend on the outcome and may range from suspension to expulsion. Every effort will be made to criminally prosecute perpetrators of sexual assaults. The accuser and the accused are entitled to the same opportunities to have others present during a campus disciplinary proceeding and both shall be informed of the outcome of the proceeding.

After an alleged sexual assault incident occurs, the University will assist the victim in changing academic and living situations if so requested and if such changes are reasonably available. Individuals, groups and organizations that desire information or programs that address sexual assaults and how to prevent such incidents should contact the UMKC Police.

*If you become the victim of a sexual assault on or off campus:*

- GET to a safe place
- CONTACT the University Police (or your local police if off campus) by dialing 9-1-1
- DO NOT shower, bathe, douche, change or destroy clothing
- DO NOT straighten up the area the assault took place
- SEEK medical attention; locally, St. Luke's Hospital, 4401 Wornall Road, 816-932-2000.
- SEEK support and assistance:
  - UMKC Counseling Center, [www.umkc.edu/chtc/](http://www.umkc.edu/chtc/), 816-235-1635
  - Women's Center, [www.umkc.edu/womenctr/](http://www.umkc.edu/womenctr/), 816-235-1638
  - Metropolitan Organization to Counter Sexual Assault (MOCSA) [www.mocsa.org](http://www.mocsa.org)
    - Office: 816-931-4527
    - 24-Hour Crisis Line, 816-531-0233
- UMKC Student Health & Wellness can provide emergency contraception and check for and treat STD's, [www.umkc.edu/chtc/health](http://www.umkc.edu/chtc/health), 816-235-6133

### **Registered Sex Offender Information**

The Missouri Sex Offender Registry can be accessed through the Missouri State Highway Patrol's website. Registered sex offenders throughout the state are posted along with their name, address, date of birth and a photo to identify the offender. Information about the offense is also available.

**[www.MSHP.DPS.MISSOURI.GOV](http://www.MSHP.DPS.MISSOURI.GOV)**

Please feel free to call the hotline number if you have questions about the offenders in your area.

**1-888-767-6747**

Telephone numbers for information on registered sex offenders by county are:

- Jackson County sexual offender's data is 816-524-4302.
- Platte County sexual offender's data is 816-858-2424.
- Cass County sexual offender's data is 816-380-5200.
- Clay County sexual offender's data is 816-792-7614.

To search for offenders anywhere in the United States, try searching the National Sex Offender Registry at: [www.nsopr.gov](http://www.nsopr.gov)

### ***Sexual Harassment Policy***

The University of Missouri uses information, education and guidance to increase awareness of the problem of sexual harassment.

It is the policy of the University of Missouri, in accord with providing a positive, discrimination-free environment, that sexual harassment in the work place or the educational environment is unacceptable conduct. Sexual harassment is subject to discipline, up to and including separation from the institution.

Sexual harassment is defined for this policy as either:

- Unwelcome sexual advances or requests for sexual activity by a University employee in a position of power or authority to a University employee or a member of the student body.
- Other unwelcome verbal or physical conduct of a sexual nature by a University employee or a member of the student body to a University employee or a member of the student body. This happens when:
  - Submission to or rejection of such conduct is used explicitly or implicitly as a condition for academic or employment decisions.
  - The purpose or effect of such conduct is to interfere unreasonably with the work or academic performance of the person being harassed.
  - The purpose or effect of such conduct to a reasonable person is to create an intimidating, hostile or offensive environment.

This policy also prohibits retaliation against any person who brings an accusation of discrimination or sexual harassment or who assists with the investigation or resolution of sexual harassment. Notwithstanding this provision, the University may discipline an employee or student who has been determined to have brought an accusation of sexual harassment in bad faith.

Members of the University community who believe they have been sexually harassed may seek redress, using the following options:

- Pursue appropriate informal resolution procedures as defined by the individual campuses. These procedures are available from the campus affirmative action/equal opportunity officer.
- Initiate a complaint or grievance within the time prescribed by the applicable grievance procedure. Faculty are referred to Section 370.010, “Academic Grievance Procedures;” staff to Section 380.010, “Grievance Procedure for Administrative, Service and Support Staff;” and students to Section 390.010, “Discrimination Grievance Procedure for Students.” Pursuing a complaint or informal resolution procedure does not compromise one’s right to initiate a grievance or seek redress under state or federal law.

Upon receiving an accusation of sexual harassment against a member of the faculty, staff or student body, the University will investigate, and if substantiated, will initiate the appropriate disciplinary procedures. There is a five-year limitation period from the date of occurrence for filing a charge that may lead to discipline. An individual who makes an accusation of sexual harassment will be informed:

- At the close of the investigation, whether or not disciplinary procedures will be initiated.
- And at the end of any disciplinary procedures, of the discipline imposed, if any.

### **Alcohol and Drugs**

University police officers enforce laws regulating the use of alcoholic beverages and underage drinking. UMKC is committed to maintaining a safe and healthy environment for the campus community. Alcohol and other drugs should not interfere with the University’s educational mission. All UMKC students, faculty members, staff members, and administrators are subject to local, state and federal laws regarding the unlawful possession, distribution, or use of alcohol or illegal drugs. Violations of University of Missouri regulations can result in disciplinary action up to and including expulsion for students and discharge for employees.

### ***Alcohol Policy***

The use or possession of any alcoholic beverage is strictly prohibited on all University property except where appropriate University approval is given, subject to legal requirements. Guidelines for alcohol use are available at the Student Life Office, located on the ground floor of the University Center. To request the use of alcoholic beverages, individuals should inquire at the Office of Student Auxiliary Services; located in the University Center, phone (816) 235-1411.

Additional information about the UMKC alcohol policy is available in the student handbook, which is accessible on line at <http://www.umkc.edu/handbook>

### ***Drug Policy***

University of Missouri regulations prohibit the unlawful possession, use, distribution, manufacture, and sale of alcoholic beverages and illicit drugs without proper prescription or required license or as expressly permitted by law or University regulations, including operating a vehicle on University property, or on streets or roadways adjacent to and abutting a campus, under the influence of alcohol or a controlled substance as prohibited by law of the State of Missouri.

Additional information about the UMKC drug policy is available in the student handbook, which is accessible on line at <http://www.umkc.edu/handbook>

### ***Alcohol or Substance Abuse Assistance***

A variety of resources exist for drug and alcohol counseling, treatment and rehabilitation programs. For detailed information concerning these resources available from the University and community agencies, students can contact the University Counseling, Health and Testing Center at (816) 235-1635, and employees can contact the Department of Human Resources at (816) 235-1621. Such referrals will be confidential.

### **Campus Facilities Access**

It is the policy of the University of Missouri-Kansas City that other than normal working hours, all buildings shall be locked to maintain the security of the buildings and their contents. Staff members and students may be issued keys to University buildings upon recommendation of the department chair or administrative head, in accordance with established procedures. Keys are issued for entry to University buildings for the purpose of conducting University business only.

All faculty, staff or students who are not issued a key may gain access to a specific area of a specific building in accordance with the following procedure:

- Written and signed permission from the dean, director, or departmental head of the specified location. This written and signed authorization shall be filed with the University

Police at least 24 hours in advance. Anyone not on the authorization list and in the specified location will be asked to leave.

- An authorized individual entering or leaving a locked building shall not permit any individual to enter who would not normally be permitted to enter the building during the hours it is locked. Authorized individuals may have guests with them as long as the guests stay in the proximity of faculty or staff members having the assigned key and the authorized individual assumes full responsibility for their presence.
- An individual entering or leaving a locked building shall be responsible for securing the door and may be held responsible for any damage to University property resulting from non-secured doors.
- The loss or theft of any key is to be reported immediately to the department chair or administrative head who, in turn will notify Campus Facilities Management and Campus Police.
- All faculty, staff and students are to have their University identification with them while on campus. Also they should produce the identification upon request from the University Police.
- Situations that individuals perceive as security hazards are requested to report these to the University Police or Campus Facilities Management.

Residence Hall students should never prop locked doors open or loan their residence hall keys to anyone. Students are to make themselves familiar with Residence Hall policies concerning visitors, after-hour admittance and general security policies. These policies and rules can be obtained from their resident assistant, resident manager or the Housing Office. Other security tips to remember include:

- Ask strangers to wait in common areas while their friends are summoned.
- Lock your room door and windows when you leave, even if only for a minute, and take your keys with you.
- Keep small valuable items out of sight, in a closed drawer, or another safe place.
- Politely offer assistance to persons in your building or residence you do not recognize. If they have legitimate business, they will appreciate your help. If they do not, ask them to leave.
- Keep your room locked when you are out during move-in. Do not leave your car unlocked when loading or unloading.
- Do not leave coats, books, or other valuable items in common areas. Keep them in your room.
- If you hear or see something suspicious, call the police immediately. Dial 911 for an emergency, or 235-1515 if it is a non-emergency.

### ***Maintenance of Campus Facilities***

The campus facilities are maintained by UMKC Campus Facilities Management and patrolled by the University Police. Campus Facilities Management maintains the University buildings, grounds and roadways with a concern for safety and security. They inspect campus facilities regularly, make repairs affecting safety and security, and respond to reports of potential safety and security hazards, such as broken windows, locks, and lighting. The police officers submit work orders for repair, recommend the trimming of shrubbery for safety reasons and conduct periodic lighting surveys. Officers report the need for replacement of lights and any other physical hazards. Periodic crime prevention surveys are conducted when a crime occurs or upon the physical change of office space and equipment when requested by an administrator. Call Campus Facilities Management

(816) 235-1354 during business hours or the University Police after hours to report any safety or security hazard in or around campus buildings, grounds or roadways.

## ***UMKC Campus and Emergency Telephone Locations***

Blue light emergency telephones (EMER) are located strategically throughout campus. These phones provide the caller a direct line to the UMKC Police. The dispatcher simultaneously receives a display indicating the location of the caller. The elevator telephones (ELE) work in the same manner. The regular campus telephones (CP) require dialing 1515 to contact UMKC Police. The UMKC Police Department encourages everyone to become familiar with the location of these phones and to report any suspicious activities.

1390	CP	BIO. 4TH FL	3515	EMER	BIXBY LANE WALK
1399	CP	CHEM. 4TH FL	3732	ELE	BLOCH
1455	CP	CHEM. 1ST FL	3518	EMER	BLOCH / LAW
1456	CP	CHEM. 3 <sup>RD</sup> FL.	3543	EMER	5322 TROOST
1458	CP	CHEM. 5TH FL.	3546	EMER	4825 TROOST FRONT DOOR
2895	CP	PAC LOBBY	3548	EMER	SRC WOMEN'S LOCKER ROOM
3017	ELE	ADMIN CENTER SOUTH	3549	EMER	SRC MEN'S LOCKER ROOM
3207	CP	KATZ 1ST.FL.WEST END	3613	ELE	COCKEFAIR
3245	CP	4747 LOBBY	3614	ELE	BIOLOGY
3306	CP	FLARSHEIM 3RD FL. LOUNGE	3615	ELE	DENTAL
3315	CP	SCOFIELD GROUND FLOOR	3616	ELE	DENTAL
3324	EMER	NURSING	3617	ELE	EDUCATION
3332	CP	DORM BASEMENT	3618	ELE	FINE ARTS
3342	CP	AC 1ST FL WEST	3619	ELE	MN. LIBRARY STAFF
3363	CP	COCKEFAIR	3620	ELE	LAW
3373	CP	LAW 1ST FLOOR	3621	ELE	MED EAST
3375	CP	SRC LOBBY	3622	ELE	MED WEST
3378	CP	MNL 1ST FLOOR	3623	ELE	KATZ PHARMACY BUILDING
3374	CP	U-CENTER WEST LOBBY	3624	ELE	PAC
3633	ELE	HAAG HALL	3625	ELE	ROYALL
3376	CP	GRANT 2ND FLOOR	3626	ELE	CHEMISTRY
3377	CP	ROYALL 1ST FLOOR	3627	ELE	4825 TROOST
3508	EMER	EDUCATION	3628	ELE	SCOFIELD
3380	CP	EDUCATION GRD. FL. LOUNGE	3630	ELE	U-CENTER
3381	CP	U-CENTER 1ST FL. EAST	3631	ELE	RESIDENCE HALL-CHERRY ST.
3733	ELE	GRANT	3632	ELE	OAK ST. RESIDENCE HALL
3384	CP	4825 1ST FLOOR	3640	ELE	OAK ST. RESIDENCE HALL
3385	CP	BLOCH	3650	ELE	NEWCOMB
3386	CP	ADMIN CENTER 2ND FL. WEST	3651	ELE	ADMIN CENTER MAIN EAST
3389	CP	U-CENTER F/S LOUNGE	3672	ELE	MN LIBRARY
3396	CP	MNL 3RD FL.	3673	ELE	BOOKSTORE
3397	CP	MNL 4TH FL	3678	EMER	PAC 1ST FL.
3399	CP	MNL 2ND FL.	3679	EMER	PAC 2ND FL.
3500	EMER	32 NORTH LEV. 3	3690	ELE	ADMIN CENTER NORTH
3501	EMER	32 NORTH LEV.4	3694	EMER	SRC POOL
3502	EMER	32 NORTH LEV. 5	3695	CP	SRC STAFF MEN'S LOCKER
3503	EMER	PAC S.W. ENTRANCE	3697	EMER	SRC CONTROL DESK
3504	EMER	S.A.S.S. BLDG	3698	CP	SRC STAFF WOMEN'S LOCKER
3505	EMER	FINE ARTS	3699	CP	SRC VIP LOCKER ROOM
3506	EMER	PARKING AREA 24 NORTH	3707	EMER	SRC WOMEN'S LOCKER HANDICAP
3509	EMER	GRANT HALL	3708	EMER	SRC MEN'S LOCKER HANDICAP
3510	EMER	COCKEFAIR	3731	ELE	SRC

3511	EMER	CHEM / BIO	3734	EMER	PARKING AREA 24 EAST
3512	EMER	OLD MAINTENANCE BLDG.	3735	EMER	WEST SIDE OF FLARSHEIM
3513	EMER	51st ST. SOUTH OF SRC	3736	EMER	SOUTH SIDE OF FLARSHEIM
3514	EMER	PARKING AREA 28	3810	ELE	MANHEIM HALL
3307	CP	FLARSHEIM 5TH FLOOR	3852	ELE	ADMIN CENTER MAIN WEST
3371	CP	MANHEIM HALL 2ND FLOOR	4045	CP	DENTAL 2ND FLOOR
3545	EMER	4747 TROOST	3379	CP	HAAG HALL 1ST FLOOR
3554	EMER	LOWER PARKING AREA 66	3244	CP	PAC LOBBY
3861	EMER	ROCKHILL STRUCTURE 4NW	3547	EMER	DENTAL SCHOOL SIDEWALK
3863	EMER	ROCKHILL STRUCTURE 2NW	4110	EMER	UPPER PARKING AREA 66
3865	EMER	ROCKHILL STRUCTURE 1SE	3862	EMER	ROCKHILL STRUCTURE 3NW
3867	EMER	ROCKHILL STRUCTURE 2NE	3864	EMER	ROCKHILL STRUCTURE 1NW
3869	EMER	ROCKHILL STRUCTURE 3SE	3866	EMER	ROCKHILL STRUCTURE 1NE
3871	EMER	ROCKHILL STRUCTURE 4SE	3868	EMER	ROCKHILL STRUCTURE 2SE
3873	EMER	ROCKHILL STRUCTURE 5SE	3870	EMER	ROCKHILL STRUCTURE 3SE
3875	EMER	ROCKHILL STRUCTURE 5NW	3872	EMER	ROCKHILL STRUCTURE 4NE
3877	ELE	ROCKHILL STRUCTURE	3874	EMER	ROCKHILL STRUCTURE 5NE
3507	EMER	NEWCOMB	3737	ELE	FLARSHEIM HALL

## Important UMKC Phone Numbers

<b>Emergency</b>	<b>9-1-1</b>
<b>Police Department</b>	<b>(816) 235-1515</b>
<b>Parking Operations</b>	<b>(816) 235-5256</b>
<b>Counseling Center</b>	<b>(816) 235-1635</b>
<b>Student Health &amp; Wellness</b>	<b>(816) 235-6133</b>
<b>Women's Center</b>	<b>(816) 235-1638</b>
<b>Student Housing</b>	<b>(816) 235-2800</b>
<b>Student Life Office</b>	<b>(816) 235-1407</b>
<b>HelpLine</b>	<b>(816) 235-2222</b>

## **Annual Crime Statistics**

The following pages contain crime statistics from past years. The definitions list, following after these statistics, was used to determine these crime statistics.

These numbers reflect crimes reported to the UMKC Police Department and numbers reported to the UMKC Police Department by Local Law Enforcement (Kansas City Police Department) and campus security authorities (Student Life, Residential Life, & other campus groups.)

Crimes are recorded in the calendar year they were reported. This report does not use a map to depict its campus, non-campus buildings or property, and public property areas.

2006 Crime Statistics

Total Crimes								Non-Campus							
Reported For: UMKC Campus								Building or Property							
Offense Type (includes attempts)	Reported to						Sub- Total	Reported to						Sub- Total	
	UMKC Police		Non- Police		Local Police			UMKC Police		Non- Police		Local Police			
	Volker	HSC	Volker	HSC	Volker	HSC		Volker	HSC	Volker	HSC	Volker	HSC		
Murder	0	0	0	0	0	0	0	0	0	0	0	0	0	0	
Manslaughter	0	0	0	0	0	0	0	0	0	0	0	0	0	0	
Forcible Sex Offenses	0	0	0	0	0	0	0	0	0	0	0	0	0	0	
Non-Forcible Sex Offenses	0	0	0	0	0	0	0	0	0	0	0	0	0	0	
Robbery	1	0	0	0	0	0	1	0	0	0	0	0	0	0	
Aggravated Assault	1	0	0	0	0	0	1	0	0	0	0	0	0	0	
Burglary	31	10	0	0	6	0	47	0	0	0	0	0	0	0	
Motor Vehicle Theft	10	1	0	0	0	0	11	0	0	0	0	0	0	0	
Arson	2	0	0	0	0	0	2	0	0	0	0	0	0	0	
Hate Crimes (by prejudices)															
Race	0	0	0	0	0	0	0	0	0	0	0	0	0	0	
Gender	0	0	0	0	0	0	0	0	0	0	0	0	0	0	
Religion	0	0	0	0	0	0	0	0	0	0	0	0	0	0	
Sex Orientation	0	0	0	0	0	0	0	0	0	0	0	0	0	0	
Ethnicity	0	0	0	0	0	0	0	0	0	0	0	0	0	0	
Disability	0	0	0	0	0	0	0	0	0	0	0	0	0	0	

Liquor Law Violations														
Arrest	1	0	0	0	0	0	1	0	0	0	0	0	0	0
Referral	0	0	33	0	0	0	33	0	0	0	0	0	0	0
Drug Law Violations														
Arrest	5	0	0	0	0	0	5	0	0	0	0	0	0	0
Referral	2	0	3	0	0	0	5	0	0	0	0	0	0	0
Weapons Law Violations														
Arrest	1	0	0	0	0	0	1	0	0	0	0	0	0	0
Referral	1	0	0	0	0	0	1	0	0	0	0	0	0	0

Total Crimes Reported For:	Public Property						Sub- Total	2006 GRAND TOTAL	On Campus Residential Only			SECTION TOTAL
	Reported to								Reported to			
	UMKC Police		Non- Police		Local Police				UMKC Police	Non- Police	Local Police	
	Volker	HSC	Volker	HSC	Volker	HSC						
Murder	0	0	0	0	0	0	0	0	0	0	0	0
Manslaughter	0	0	0	0	0	0	0	0	0	0	0	0
Forcible Sex Offenses	0	0	0	0	0	0	0	0	0	0	0	0
Non-Forcible Sex Offenses	0	0	0	0	0	0	0	0	0	0	0	0
Robbery	0	0	0	0	0	0	0	1	0	0	0	0
Aggravated Assault	0	0	0	0	0	0	0	1	1	0	0	1
Burglary	0	0	0	0	2	0	2	49	8	0	0	8
Motor Vehicle Theft	0	0	0	0	3	0	3	14	0	0	0	0
Arson	0	0	0	0	0	0	0	2	1	0	0	1
Hate Crimes (by prejudices)												
Race	0	0	0	0	0	0	0	0	0	0	0	0
Gender	0	0	0	0	0	0	0	0	0	0	0	0
Religion	0	0	0	0	0	0	0	0	0	0	0	0
Sex Orientation	0	0	0	0	0	0	0	0	0	0	0	0
Ethnicity	0	0	0	0	0	0	0	0	0	0	0	0
Disability	0	0	0	0	0	0	0	0	0	0	0	0
Liquor Law Violations												
Arrest	1	0	0	0	0	0	1	2	1	0	0	1
Referral	0	0	0	0	0	0	0	33	33	0	0	33
Drug Law Violations												
Arrest	3	0	0	0	0	0	3	8	5	0	0	5
Referral	0	0	0	0	0	0	0	5	5	0	0	5
Weapons Law Violations												
Arrest	0	0	0	0	0	0	0	1	1	0	0	1
Referral	0	0	0	0	0	0	0	1	1	0	0	1

2005 Crime Statistics

Total Crimes								Non-Campus							
Reported For: UMKC Campus								Building or Property							
Offense Type (includes attempts)	Reported to						Sub- Total	Reported to						Sub- Total	
	UMKC		Non-		Local			UMKC		Non-		Local			
	Police		Police		Police			Police		Police		Police			
	Volker	HSC	Volker	HSC	Volker	HSC		Volker	HSC	Volker	HSC	Volker	HSC		
Murder	0	0	0	0	0	0	0	0	0	0	0	0	0	0	
Manslaughter	0	0	0	0	0	0	0	0	0	0	0	0	0	0	
Forcible Sex Offenses	4	0	0	0	0	0	4	0	0	0	0	0	0	0	
Non-Forcible Sex Offenses	0	0	0	0	0	0	0	0	0	0	0	0	0	0	
Robbery	2	0	0	0	1	0	3	0	0	0	0	0	0	0	
Aggravated Assault	0	0	0	0	0	0	0	0	0	0	0	0	0	0	
Burglary	39	4	0	0	3	0	46	0	2	0	0	0	0	2	
Motor Vehicle Theft	7	2	0	0	1	0	10	0	0	0	0	0	0	0	
Arson	0	0	0	0	0	0	0	0	0	0	0	0	0	0	
Hate Crimes (by prejudices)															
Race	0	0	0	0	0	0	0	0	0	0	0	0	0	0	
Gender	0	0	0	0	0	0	0	0	0	0	0	0	0	0	
Religion	0	0	0	0	0	0	0	0	0	0	0	0	0	0	
Sex Orientation	0	0	0	0	0	0	0	0	0	0	0	0	0	0	
Ethnicity	0	0	0	0	0	0	0	0	0	0	0	0	0	0	
Disability	0	0	0	0	0	0	0	0	0	0	0	0	0	0	

Liquor Law Violations														
Arrest	0	0	0	0	0	0	0	0	0	0	0	0	0	0
Referral	1	0	0	0	0	0	1	0	0	0	0	0	0	0
Drug Law Violations														
Arrest	3	0	0	0	0	0	3	0	0	0	0	0	0	0
Referral	0	0	0	0	0	0	0	0	0	0	0	0	0	0
Weapons Law Violations														
Arrest	0	0	0	0	0	0	0	0	0	0	0	0	0	0
Referral	0	0	0	0	0	0	0	0	0	0	0	0	0	0

Total Crimes								On Campus				
Reported For:	Public Property						2005	Residential Only				
Offense Type (includes attempts)	Reported to						Sub- Total	GRAND TOTAL	Reported to			SECTION TOTAL
	UMKC Police		Non- Police		Local Police				UMKC Police	Non- Police	Local Police	
	Volker	HSC	Volker	HSC	Volker	HSC						
Murder	0	0	0	0	0	0	0	0	0	0	0	0
Manslaughter	0	0	0	0	0	0	0	0	0	0	0	0
Forcible Sex Offenses	0	0	0	0	0	0	0	4	0	0	0	0
Non-Forcible Sex Offenses	0	0	0	0	0	0	0	0	0	0	0	0
Robbery	1	0	0	0	0	0	1	4	0	0	0	0
Aggravated Assault	0	0	0	0	1	0	1	1	0	0	0	0
Burglary	0	0	0	0	0	0	0	48	20	0	0	20
Motor Vehicle Theft	0	0	0	0	7	0	7	17	0	0	0	0
Arson	0	0	0	0	0	0	0	0	0	0	0	0
Hate Crimes (by prejudices)												
Race	0	0	0	0	0	0	0	0	0	0	0	0
Gender	0	0	0	0	0	0	0	0	0	0	0	0
Religion	0	0	0	0	0	0	0	0	0	0	0	0
Sex Orientation	0	0	0	0	0	0	0	0	0	0	0	0
Ethnicity	0	0	0	0	0	0	0	0	0	0	0	0
Disability	0	0	0	0	0	0	0	0	0	0	0	0
Liquor Law Violations												
Arrest	0	0	0	0	0	0	0	0	0	0	0	0
Referral	0	0	0	0	0	0	0	1	1	0	0	1
Drug Law Violations												
Arrest	6	2	0	0	0	0	8	11	0	0	0	0
Referral	0	0	0	0	0	0	0	0	0	0	0	0
Weapons Law Violations												
Arrest	1	0	0	0	0	0	1	1	0	0	0	0
Referral	0	0	0	0	0	0	0	0	0	0	0	0

2004 Crime Statistics

Total Crimes								Non-Campus							
Reported For: UMKC Campus								Building or Property							
Offense Type (includes attempts)	Reported to						Sub- Total	Reported to						Sub- Total	
	UMKC Police		Non- Police		Local Police			UMKC Police		Non- Police		Local Police			
	Volker	HSC	Volker	HSC	Volker	HSC		Volker	HSC	Volker	HSC	Volker	HSC		
Murder	0	0	0	0	0	0	0	0	0	0	0	0	0	0	
Manslaughter	0	0	0	0	0	0	0	0	0	0	0	0	0	0	
Forcible Sex Offenses	3	0	0	0	0	0	3	0	0	0	0	0	0	0	
Non-Forcible Sex Offenses	0	0	0	0	0	0	0	0	0	0	0	0	0	0	
Robbery	2	1	0	0	0	0	3	0	0	0	0	0	0	0	
Aggravated Assault	2	0	0	0	0	0	2	0	0	0	0	0	0	0	
Burglary	52	8	0	0	1	0	61	1	0	0	0	5	0	6	
Motor Vehicle Theft	15	0	0	0	0	0	15	1	0	0	0	0	0	1	
Arson	0	0	0	0	0	0	0	0	0	0	0	0	0	0	
Hate Crimes (by prejudices)															
Race	0	0	0	0	0	0	0	0	0	0	0	0	0	0	
Gender	0	0	0	0	0	0	0	0	0	0	0	0	0	0	
Religion	0	0	0	0	0	0	0	0	0	0	0	0	0	0	
Sex Orientation	0	0	0	0	0	0	0	0	0	0	0	0	0	0	
Ethnicity	0	0	0	0	0	0	0	0	0	0	0	0	0	0	
Disability	0	0	0	0	0	0	0	0	0	0	0	0	0	0	

Liquor Law Violations														
Arrest	0	0	0	0	0	0	0	0	0	0	0	0	0	0
Referral	4	0	0	0	0	0	4	0	0	0	0	0	0	0
Drug Law Violations														
Arrest	4	0	0	0	0	0	4	0	0	0	0	0	0	0
Referral	3	0	0	0	0	0	3	0	0	0	0	0	0	0
Weapons Law Violations														
Arrest	0	0	0	0	0	0	0	0	0	0	0	0	0	0
Referral	0	0	0	0	0	0	0	0	0	0	0	0	0	0

Total Crimes								On Campus				
Reported For:	Public Property						2004	Residential Only				
Offense Type (includes attempts)	Reported to						Sub- Total	GRAND TOTAL	Reported to			SECTION TOTAL
	UMKC Police		Non- Police		Local Police				UMKC Police	Non- Police	Local Police	
	Volker	HSC	Volker	HSC	Volker	HSC						
Murder	0	0	0	0	0	0	0	0	0	0	0	0
Manslaughter	0	0	0	0	0	0	0	0	0	0	0	0
Forcible Sex Offenses	0	0	0	0	0	0	0	3	2	0	0	2
Non-Forcible Sex Offenses	0	0	0	0	0	0	0	0	0	0	0	0
Robbery	0	0	0	0	4	1	5	8	0	0	0	0
Aggravated Assault	1	0	0	0	4	0	5	7	1	0	0	1
Burglary	0	0	0	0	0	0	0	67	17	0	0	17
Motor Vehicle Theft	0	0	0	0	4	2	6	22	0	0	0	0
Arson	0	0	0	0	0	0	0	0	0	0	0	0
Hate Crimes (by prejudices)												
Race	0	0	0	0	0	0	0	0	0	0	0	0
Gender	0	0	0	0	0	0	0	0	0	0	0	0
Religion	0	0	0	0	0	0	0	0	0	0	0	0
Sex Orientation	0	0	0	0	0	0	0	0	0	0	0	0
Ethnicity	0	0	0	0	0	0	0	0	0	0	0	0
Disability	0	0	0	0	0	0	0	0	0	0	0	0
Liquor Law Violations												
Arrest	0	0	0	0	0	0	0	0	0	0	0	0
Referral	0	0	0	0	0	0	0	4	4	0	0	4
Drug Law Violations												
Arrest	1	0	0	0	0	0	1	5	4	0	0	4
Referral	0	0	0	0	0	0	0	3	3	0	0	3
Weapons Law Violations												
Arrest	0	0	0	0	0	0	0	0	0	0	0	0
Referral	0	0	0	0	0	0	0	0	0	0	0	0

2003 Crime Statistics

Total Crimes	Non-Campus														
	UMKC Campus							Building or Property							
Reported For:	Reported to							Sub-Total	Reported to						Sub-Total
Offense Type (includes attempts)	UMKC Police		Non-Police		Local Police		UMKC Police		Non-Police		Local Police				
	Volker	HSC	Volker	HSC	Volker	HSC		Volker	HSC	Volker	HSC	Volker	HSC		
Murder	0	0	0	0	0	0	0	0	0	0	0	0	0	0	
Manslaughter	0	0	0	0	0	0	0	0	0	0	0	0	0	0	
Forcible Sex Offenses	1	0	0	0	0	0	1	0	0	0	0	0	0	0	
Non-Forcible Sex Offenses	0	0	0	0	0	0	0	0	0	0	0	0	0	0	
Robbery	1	0	0	0	0	0	1	0	0	0	0	1	0	1	
Aggravated Assault	1	0	0	0	1	0	2	0	0	0	0	0	0	0	
Burglary	41	1	0	0	3	0	45	0	0	0	0	1	0	1	
Motor Vehicle Theft	16	1	0	0	2	0	19	0	0	0	0	1	0	1	
Arson	0	0	0	0	0	0	0	0	0	0	0	0	0	0	
Hate Crimes (by prejudices)															
Race	0	0	0	0	0	0	0	0	0	0	0	0	0	0	
Gender	0	0	0	0	0	0	0	0	0	0	0	0	0	0	
Religion	0	0	0	0	0	0	0	0	0	0	0	0	0	0	
Sex Orientation	0	0	0	0	0	0	0	0	0	0	0	0	0	0	
Ethnicity	0	0	0	0	0	0	0	0	0	0	0	0	0	0	
Disability	0	0	0	0	0	0	0	0	0	0	0	0	0	0	

Liquor Law Violations														
Arrest	3	0	0	0	0	0	3	0	0	0	0	0	0	0
Referral	11	0	0	0	0	0	11	0	0	0	0	0	0	0
Drug Law Violations														
Arrest	3	1	0	0	0	0	4	0	0	0	0	0	0	0
Referral	3	0	0	0	0	0	3	0	0	0	0	0	0	0
Weapons Law Violations														
Arrest	0	0	0	0	0	0	0	0	0	0	0	0	0	0
Referral	0	0	0	0	0	0	0	0	0	0	0	0	0	0

Total Crimes								2003 GRAND TOTAL	On Campus			
Reported For:		Public Property							Residential Only			SECTION TOTAL
Offense Type (includes attempts)		Reported to							Reported to			
		UMKC Police		Non- Police		Local Police		Sub- Total	UMKC Police	Non- Police	Local Police	
		Volker	HSC	Volker	HSC	Volker	HSC					
Murder		0	0	0	0	0	1	1	0	0	0	0
Manslaughter		0	0	0	0	0	0	0	0	0	0	0
Forcible Sex Offenses		0	0	0	0	0	0	0	1	0	0	1
Non-Forcible Sex Offenses		0	0	0	0	0	0	0	0	0	0	0
Robbery		0	0	0	0	2	1	3	0	0	0	0
Aggravated Assault		0	0	0	0	0	1	1	1	0	1	2
Burglary		0	0	0	0	5	1	6	3	0	3	6
Motor Vehicle Theft		0	0	0	0	14	7	21	0	0	2	2
Arson		0	0	0	0	0	0	0	0	0	0	0
Hate Crimes (by prejudices)												
Race		0	0	0	0	0	0	0	0	0	0	0
Gender		0	0	0	0	0	0	0	0	0	0	0
Religion		0	0	0	0	0	0	0	0	0	0	0
Sex Orientation		0	0	0	0	0	0	0	0	0	0	0
Ethnicity		0	0	0	0	0	0	0	0	0	0	0
Disability		0	0	0	0	0	0	0	0	0	0	0
Liquor Law Violations												
Arrest		0	0	0	0	0	0	0	3	0	0	0
Referral		0	0	0	0	0	0	0	11	11	0	0
Drug Law Violations												
Arrest		0	0	0	0	0	0	0	4	2	0	0
Referral		0	0	0	0	0	0	0	3	3	0	0
Weapons Law Violations												
Arrest		0	0	0	0	0	0	0	0	0	0	0
Referral		0	0	0	0	0	0	0	0	0	0	0

2002 Crime Statistics

Total Crimes	Non-Campus														
	UMKC Campus							Building or Property							
Reported For:	Reported to							Sub-Total	Reported to						Sub-Total
Offense Type (includes attempts)	UMKC Police		Non-Police		Local Police		UMKC Police		Non-Police		Local Police				
	Volker	HSC	Volker	HSC	Volker	HSC	Volker	HSC	Volker	HSC	Volker	HSC	Volker	HSC	
Murder	0	0	0	0	0	0	0	0	0	0	0	0	0	0	
Manslaughter	0	0	0	0	0	0	0	0	0	0	0	0	0	0	
Forcible Sex Offenses	2	0	0	0	0	0	2	0	0	0	0	0	0	0	
Non-Forcible Sex Offenses	0	0	0	0	0	0	0	0	0	0	0	0	0	0	
Robbery	0	0	0	0	0	0	0	0	0	0	0	0	0	0	
Aggravated Assault	2	0	0	0	0	0	2	0	0	0	0	0	0	0	
Burglary	87	13	0	0	0	0	100	0	0	0	0	2	0	2	
Motor Vehicle Theft	10	1	0	0	0	0	11	0	0	0	0	0	0	0	
Arson	1	0	0	0	0	0	1	0	0	0	0	0	0	0	
Hate Crimes (by prejudices)															
Race	0	0	0	0	0	0	0	0	0	0	0	0	0	0	
Gender	0	0	0	0	0	0	0	0	0	0	0	0	0	0	
Religion	0	0	0	0	0	0	0	0	0	0	0	0	0	0	
Sex Orientation	0	0	0	0	0	0	0	0	0	0	0	0	0	0	
Ethnicity	0	0	0	0	0	0	0	0	0	0	0	0	0	0	
Disability	0	0	0	0	0	0	0	0	0	0	0	0	0	0	

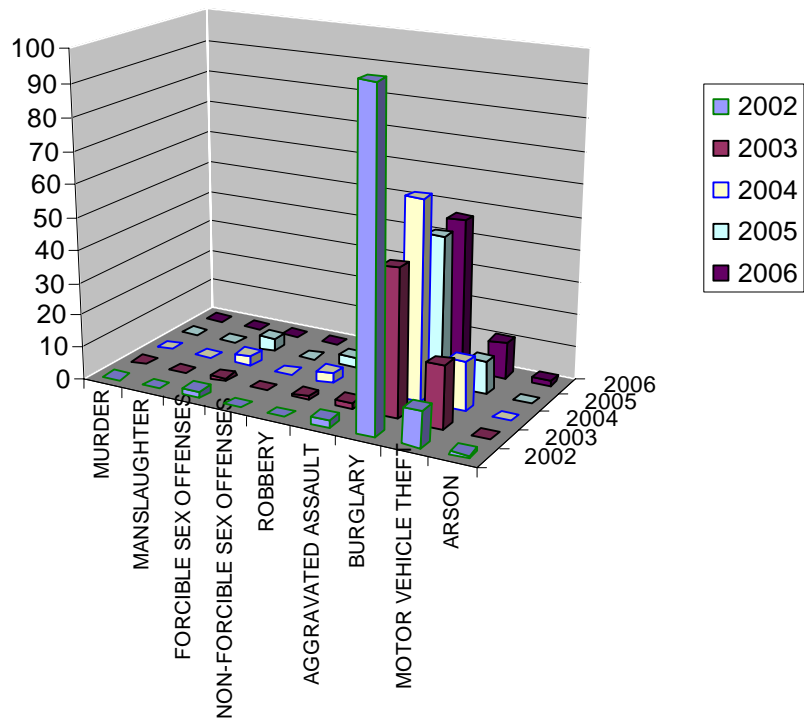
Liquor Law Violations														
Arrest	1	0	0	0	0	0	1	0	0	0	0	0	0	0
Referral	16	0	0	0	0	0	16	0	0	0	0	0	0	0
Drug Law Violations														
Arrest	2	0	0	0	0	0	2	0	0	0	0	0	0	0
Referral	1	0	0	0	0	0	1	0	0	0	0	0	0	0
Weapons Law Violations														
Arrest	0	0	0	0	0	0	0	0	0	0	0	0	0	0
Referral	0	0	0	0	0	0	0	0	0	0	0	0	0	0

Total Crimes								2002	On Campus			
	Public Property								GRAND	Residential Only		
Reported For:	Reported to						Sub- Total	TOTAL		Reported to		
Offense Type (includes attempts)	UMKC Police		Non- Police		Local Police				UMKC Police	Non- Police	Local Police	
	Volker	HSC	Volker	HSC	Volker	HSC						
Murder	0	0	0	0	0	0	0	0	0	0	0	0
Manslaughter	0	0	0	0	0	0	0	0	0	0	0	0
Forcible Sex Offenses	0	0	0	0	0	0	0	2	0	0	0	0
Non-Forcible Sex Offenses	0	0	0	0	0	0	0	0	0	0	0	0
Robbery	0	0	0	0	1	4	5	5	0	0	0	0
Aggravated Assault	0	0	0	0	0	0	0	2	0	0	0	0
Burglary	0	0	0	0	0	0	0	102	7	0	2	9
Motor Vehicle Theft	0	0	0	0	16	15	31	42	1	0	7	8
Arson	0	0	0	0	0	0	0	1	0	0	0	0
Hate Crimes (by prejudices)												
Race	0	0	0	0	0	0	0	0	0	0	0	0
Gender	0	0	0	0	0	0	0	0	0	0	0	0
Religion	0	0	0	0	0	0	0	0	0	0	0	0
Sex Orientation	0	0	0	0	0	0	0	0	0	0	0	0
Ethnicity	0	0	0	0	0	0	0	0	0	0	0	0
Disability	0	0	0	0	0	0	0	0	0	0	0	0
Liquor Law Violations												
Arrest	0	0	0	0	0	0	0	1	0	0	0	0
Referral	0	0	0	0	0	0	0	16	0	0	0	0
Drug Law Violations												
Arrest	6	2	0	0	0	0	8	10	0	0	0	0
Referral	0	0	0	0	0	0	0	1	0	0	0	0
Weapons Law Violations												
Arrest	0	0	0	0	0	0	0	0	0	0	0	0
Referral	0	0	0	0	0	0	0	0	0	0	0	0

## CRIME ON CAMPUS COMPARISON

	2002	2003	2004	2005	2006
MURDER	0	0	0	0	0
MANSLAUGHTER	0	0	0	0	0
FORCIBLE SEX OFFENSES	2	1	3	4	0
NON-FORCIBLE SEX OFFENSES	0	0	0	0	0
ROBBERY	0	1	3	3	1
AGGRAVATED ASSAULT	2	2	2	0	1
BURGLARY	100	45	61	46	47
MOTOR VEHICLE THEFT	11	19	15	10	11
ARSON	1	0	0	0	2

## CLERY CRIME COMPARISON



## **Crime Definitions**

**Criminal Homicide-Murder and Non-negligent Manslaughter** – The willful (non-negligent) killing of one human being by another.

**Criminal Homicide-Manslaughter by Negligence** – The killing of another person through gross negligence.

**Sex Offenses-Forcible**-Any sexual act directed against another person, forcibly and/or against that person's will; or not forcibly or against the person's will where the victim is incapable of giving consent.

Forcible sex offenses include:

A. Forcible Rape - The carnal knowledge of a person, forcibly and/or against that person's will; or not forcibly or against the person's will where the victim is incapable of giving consent because of his/her temporary or permanent mental or physical incapacity (or because of his/her youth).

B. Forcible Sodomy - Oral or anal sexual intercourse with another person, forcibly and/or against that person's will; or not forcibly against the person's will where the victim is incapable of giving consent because of his/her youth or because of his/her temporary or permanent mental or physical incapacity.

C. Sexual Assault with an Object - The use of an object or instrument to unlawfully penetrate, however slightly, the genital or anal opening of the body of another person, forcibly and/or against that person's will; or not forcibly or against the person's will where the victim is incapable of giving consent because of his/her youth or because of his/her temporary or permanent mental or physical incapacity.

D. Forcible Fondling - The touching of the private body parts of another person for the purpose of sexual gratification, forcibly and/or against that person's will; or, not forcibly or against the person's will where the victim is incapable of giving consent because of his/her youth or because of his/her temporary or permanent mental incapacity.

**Sex Offenses-Non-forcible**-Unlawful, non-forcible intercourse.

Non-forcible sex offenses include:

A. Incest - Non-forcible sexual intercourse between persons who are related to each other within the degrees wherein marriage is prohibited by law.

B. Statutory Rape - Non-forcible sexual intercourse with a person who is under the statutory age of consent.

**Robbery** - The taking, or attempted taking, of anything of value from the care, custody or control of a person or persons by force or threat of force or violence and/or by putting the victim in fear.

**Aggravated Assault** – An unlawful attack by one person upon another for the purpose of inflicting severe or aggravated bodily injury. This type of assault usually is accompanied by the use of a weapon or by means likely to produce death or great bodily harm. It is not necessary that the injury

result from an aggravated assault when a gun, knife or other weapon is used which could and probably would result in serious personal injury if the crime were successfully completed.

**Burglary** - The unlawful entry of a structure to commit a felony or theft. For reporting purposes this definition includes: unlawful entry with intent to commit a larceny or felony; breaking and entering with intent to commit a larceny; housebreaking; safecracking; and all attempts to commit any of the aforementioned.

**Motor Vehicle Theft** - The theft or attempted theft of a motor vehicle. (Includes all cases where automobiles are taken by persons not having lawful access even though the vehicles are later abandoned, including joyriding.)

**Arson** - Any willful or malicious burning or attempt to burn, with or without intent to defraud, a dwelling, house, public building, motor vehicle or aircraft, personal property of another, etc.

**Liquor Law Violations** - Violations of laws or ordinances prohibiting: the manufacture, sale, purchase, transporting, furnishing, possessing of intoxicating liquor; maintaining unlawful drinking places; bootlegging; operating a still; furnishing liquor to a minor or intemperate person; using a vehicle for illegal transportation of liquor; drinking on a train or public conveyance; and all attempts to commit any of the aforementioned.

**Drug Abuse Violations** - Violations of laws prohibiting the production, distribution, and/or use of certain controlled substances and the equipment or devices utilized in their preparation and/or use.

**Weapons Possessions** - Violations of laws or ordinances prohibiting the manufacture, sale, purchase, transportation, possession, concealment, or use of firearms, cutting instruments, explosives, incendiary devices, or other deadly weapons.