



Police Department

Campus Safety and Crime Report

OCTOBER 2009

In accordance with the Jeanne Clery Disclosure of Campus Security Policy and Campus Crime Statistics Act of 1998



UMKC Police Department

4825 Troost, Room 214B

Kansas City, MO 64110

(816) 235-1515

www.umkc.edu/safetyreport

go.umkc.edu/police

"To Serve and Protect with Integrity, Courage and Respect."

MESSAGE FROM THE CHIEF OF POLICE

Welcome to the University of Missouri-Kansas City:

The University of Missouri-Kansas City is committed to providing the members of the campus community and visitors with the safest and most secure environment possible. At this time, I would like to request your assistance in making the campus a safer and more secure learning environment by contacting the UMKC Police Department if you witness a crime or suspicious activity on campus.

Each year, in compliance with the Jeanne Clery Disclosure of Campus Security Policy and Campus Crime Statistics Act, the UMKC Police Department makes available the Annual Campus Safety and Crime Report. This report is published to inform the faculty, staff, students, and citizens of our crime statistics, policies, procedures, and general safety on the University of Missouri-Kansas City campus.

Additional copies of this report may be obtained by contacting our office at (816) 235-1515, by stopping by our Communications Office in the Police Department at 4825 Troost, room 214B, or you may access this report at: www.umkc.edu/safetyreport

All of the police officers employed by UMKC are certified State Peace Officers and have the jurisdictional responsibilities for all crimes and incidents that occur on our campus. Our department recently completed the lengthy process to become nationally accredited by the Commission on Accreditation for Law Enforcement Agencies, Inc.

As the Chief of Police for the University of Missouri-Kansas City, I look forward to working with our community to address the challenges associated with the academic community. I can assure you that all members of UMKC Police Department are committed to being partners with our community and providing excellent service.

Sincerely,

Michael Bongartz

Michael Bongartz
Chief of Police

About this Report

In 1990, the federal “Crime Awareness and Campus Security Act” was enacted requiring universities and colleges to:

- Publish and distribute an annual campus security report that contains the most recent calendar year and the two preceding calendar years of campus crime statistics, policy statements and program descriptions, and procedures to be followed in sex offenses.
- Inform prospective students and employees about the report.
- Provide timely notice to the campus on crimes that are considered threats to safety.

In 1998, this act became known as the “Jeanne Clery Disclosure of Campus Security Policy and Campus Crime Statistics Act,” through oversight of the United States Department of Education.

This report describes security practices and procedures at the University of Missouri-Kansas City and lists crime statistics for the most recent calendar year and more than the required two preceding calendar years. Each year the University disseminates information on the status of campus security to all current students and employees. Upon request, the report will be provided to persons who request a copy. This report can also be accessed by going to the UMKC Police webpage (<http://www.umkc.edu/adminfinance/police/csr.asp>) and following the “2009 Crime Report” link.

The 2009 edition of the Campus Safety and Crime Report lists yearly statistics for the crimes of murder, sexual offenses, robbery, aggravated assault, burglary, arson, motor vehicle thefts, and “hate crime” offenses, as well as statistics for arrests and disciplinary referrals for alcohol, drug, and weapon violations. These crimes are defined in this report.

The administrative section of the UMKC Police Department has prepared this report using internal crime reports and other statistical data and information. In addition, data and information is supplied by the UMKC Division of Student Affairs, Deans, Directors, Department Heads and the Kansas City, Missouri Police Department. Please take some time to review the information contained in the report and if you have questions please do not hesitate to contact the UMKC Police at 816-235-1515.

Table of Contents

Mission and Purpose	6
University Police: Your Community Policing Agency	7
Policy for Reporting the Annual Disclosure of Crime Statistics	8
Policy on Crime and Incident Reporting	9
Timely Warning Policy	10
Crime Prevention	10
<i>Your Role in Preventing Crime</i>	10
<i>Prevention Tips</i>	10
<i>Crime Prevention Presentations and Training</i>	11
Sexual Assault Policy Statement	11
<i>Registered Sex Offender Information</i>	12
<i>Sexual Harassment Policy</i>	13
Alcohol and Drugs	14
<i>Alcohol Policy</i>	14
<i>Drug Policy</i>	14
<i>Alcohol or Substance Abuse Assistance</i>	15
Campus Facilities Access	15
Annual Crime Statistics	21
2008 Crime Statistics	22
2007 Crime Statistics	24
2006 Crime Statistics	26
2005 Crime Statistics	28
2004 Crime Statistics	30
2003 Crime Statistics	32
2002 Crime Statistics	34
CRIME ON CAMPUS COMPARISON	36
Crime Definitions	37

The University of Missouri-Kansas City

The University of Missouri-Kansas City was spawned by a city built at the origin of the Oregon and Santa Fe trails. These roadways to the west began at Old Westport, just a few miles from the present UMKC campus.

In the 1890s, there was talk of founding a university in Kansas City because of the city's growth, but it was not until the 1920s that talk turned to action. In the postwar decade, the chamber of commerce appointed a committee to consider the possibility of a university in Kansas City. A board of trustees comprised of leading businessmen was established and the board proceeded cautiously with its plans.

In 1929, a charter for the University of Kansas City was granted. The dream became a reality when William Volker, a local philanthropist for whom the 93-acre Volker campus is named, presented the board with the 40-acre nucleus of the present campus site in Kansas City's Rockhill district. Volker also provided funds to purchase the former private home of Walter S. Dickey, a wealthy Kansas City manufacturer. The ivy-covered stone mansion, now known as Scofield Hall and situated in the center of the campus, was the fledgling university's first main building.

With a charter and a campus site, the Board of Trustees started a citywide drive for funds. In 1933, the University of Kansas City announced that classes would begin in October. A faculty of 17 was hired, and on Oct. 2, 1933, 264 students were enrolled. The University of Kansas City, a private, independent university, had begun.

On July 25, 1963, the University of Kansas City became a part of the University of Missouri System, joining three other campuses located in Columbia, Rolla and St. Louis. At that time, the Board of Trustees of the University of Kansas City transferred assets estimated at \$20 million to the Board of Curators of the University of Missouri.

The University's name was changed to University of Missouri-Kansas City and since 1963 the Kansas City campus has experienced steady growth while expanding on urban connections. The total number of students taking classes at UMKC is now more than 14,200 students.

In addition to the Volker campus, UMKC operates the Hospital Hill campus, located in midtown Kansas City, Mo. This campus is adjacent to Truman Medical Center, UMKC's primary public teaching hospital, and is home to the UMKC School of Medicine, School of Dentistry, the School of Nursing, the School of Pharmacy and the Institute of Human Development.

UMKC Police Department

Mission and Purpose

The fundamental mission of the University Police force is to provide the leadership and professional support required to sustain and improve the University System's efforts to develop a balanced police-University community effort against any lawlessness or disorderly conduct which could interfere with the general missions of the University System. As such, the UMKC Police Department is an essential university partner promoting a safe and orderly learning environment and enhanced quality of life with a reduction of crime, social disorder and fear of crime.

Values and Guiding Principles

We are committed to the pursuit of excellence in our delivery of police services.

We recognize our interdependent relationship with the community we serve and will remain sensitive to the community's priorities and needs.

We collaborate in the development of innovative and responsive problem solving.

We are enriched by the diversity of our community and respect and protect the rights and dignity of all persons.

We conduct all citizen contacts with courtesy and compassion, as we are dedicated to providing the highest level of service with integrity, fairness and professionalism.

We serve with courage and pride in maintaining the public trust by upholding the highest ethical standards.

To promote organizational growth we are committed to assisting in the development of the employee's professional and personal knowledge, skills and abilities, in an atmosphere where the work is fun, challenging and satisfying.

University Police: Your Community Policing Agency

Safety and security is coordinated by the University Police, located in 4825 Troost Building, room 214B. Missouri Revised Statutes recognize UMKC officers as police officers in the State of Missouri, providing the officers with full law enforcement authority within the State of Missouri. UMKC police officers are commissioned under the authority of the University of Missouri Board of Curators and Missouri Peace Officer Standards and Training (POST).

UMKC officers have the same power and authority as any other police officer in the State. Officers are required to maintain the same skills, training, and qualifications regardless of jurisdiction. In many cases, our officers receive extensive specialized training to better serve the University community.

UMKC employs 28 police officers, 9 security guards, and 6 communications operators.

All police officers are graduates of the Kansas City Police Academy or the Western Missouri Police Academy where they receive more than 1000 hours of law enforcement training. The academy training consists of approximately seven months of instruction covering Constitutional Law, Missouri Statutory Law, Traffic Law, Criminal Investigation, First Aid, Human Behavior, Juvenile Justice and Procedures, Patrol, Report Writing, Traffic Investigation, Defensive Tactics, Driver Training, Firearms, and Physical Training. Successful completion of the academy is a prerequisite for continued employment. All officers are then licensed through the Missouri Department of Public Safety with a Class A license and have the full authority of any police officer. After completion of the police academy, new officers are further developed in an on-the-job 10-week field-training program with a field-training officer as their coach/mentor. Throughout the year, in-service training and other appropriate training using outside agencies and organizations are conducted.

The UMKC Police Department has primary law enforcement jurisdiction on the campus and associated University properties. As with any other law enforcement agency, it is the duty of the University Police officer to keep the peace and maintain order. We strive to maintain an environment that is conducive to pursuit of academic endeavors.

We are organized as any other police agency, and are comprised of a uniformed patrol division, detective division, crime prevention unit, administrative section and a civilian support staff consisting of communications officers (commonly referred to as radio dispatchers), clerical staff and security guards.

University police officers conduct foot, vehicular and bicycle patrols on campus and in the residence community 24-hours a day, throughout the year. Officers are responsible for reporting and investigating crimes and traffic accidents, responding to medical emergencies, enforcement of state laws and local ordinances, and all other incidents requiring police assistance. Criminal cases are forwarded to the Kansas City Prosecuting Attorney's Office or the Jackson County Prosecuting Attorney's Office for prosecution. The department enforces the University parking rules and regulations as well as city traffic regulations on adjacent and through streets.

We are your “hometown police department” with authority and responsibilities as any other law enforcement agency.

Relationships with Other Law Enforcement Agencies

The University of Missouri-Kansas City Police Department maintains a close working relationship with the Kansas City, Missouri Police Department, Jackson County Sheriff’s Department, Jackson County Prosecuting Attorney Office, and all metropolitan and Missouri law enforcement agencies. Our cooperative mutual aid agreement with the Kansas City Police Department enables us to work together on a daily basis and in unusual situations while fostering an air of cooperation.

UMKC-PD has direct computer access to the Missouri Uniform Law Enforcement System (MULES) and KC Automated Law Enforcement Response Team (ALERT), as well as the National Crime Information Center (NCIC) in Washington, D.C. Computerized police records allow UMKC-PD to share information with other law enforcement agencies.

During multi-agency emergency operations, a metro-area radio frequency has been established to permit law enforcement and emergency services to effectively communicate and coordinate emergency operations.

Due to the complexity of many investigations, it is important for UMKC-PD to work closely with all law enforcement and criminal justice agencies. We are pleased that our working relationships at the federal, state, and local levels continue to serve the university community.

Safety on Campus

Policy for Reporting the Annual Disclosure of Crime Statistics

Campus crime, arrest and referral statistics include those reported to the UMKC Police, designated campus officials (including but not limited to directors, deans, department heads, advisors to students/student organizations, athletic department), and local law enforcement agencies. Each entity provides updated information on their educational efforts and programs to comply with the Act. Missouri law requires prompt, mandatory reporting to the local law enforcement agency by health care practitioners (such as those at the student counseling and health center) when they provide medical services to a person they know or reasonably suspect is suffering from wounds inflicted by a firearm or is a result of assault or abusive conduct. Department of Counseling, Health and Testing staff inform their clients of the procedures to report crime to the University Police on a voluntary basis should they feel it is in the best interest of the client.

Each year, all students, faculty and staff are notified electronically about publication of this report; that is, by mass e-mail, posting on UMKC home web site, and “UMKC Announcements,” that provide the web site to access this report. Additionally, faculty and staff receive similar notification in the mail. Copies of the report may also be obtained at the University Police Department located at 4825 Troost, room 214B,

or by calling (816) 235-1515. All prospective employees may obtain a copy in this manner and information about the availability of this report is included in the UMKC employment application.

Policy on Crime and Incident Reporting

The University of Missouri-Kansas City Police Department is the primary agency for reporting and investigating all crimes that occur on University property regardless of how seemingly insignificant the incident. It is the policy of the UMKC Police Department to encourage prompt reporting of crimes, potential criminal actions and any emergency on campus, including medical and fire emergencies, directly to the UMKC Police. This includes prompt reporting of all incidents that could result in injury to or death of persons, damage to, destruction, theft or disappearance of University property (including money and securities) or property of others. These incidents are reported in order that causes may be determined and corrective measures taken to improve safety and preserve University assets.

To report a crime or emergency on campus, call **UMKC-PD by dialing 9-1-1** from any telephone on campus. Also, emergency phones are distinctively marked and have a blue light on top, and are located throughout campus. Campus elevators are also equipped with emergency phones. Upon receipt of the call, a University police officer will be immediately dispatched to the site to meet with the victim or witness to gather information and prepare an official report and have the authority to make arrests if needed.

Crime and incident reports may be made 24 hours a day by calling **9-1-1 for emergencies**, or **235-1515 for non-emergencies**, or coming to UMKC-PD. Priority is given to reports of incidents that threaten life or safety of people, the security of the property and the peace of the community.

UMKC-PD is located on the corner of Troost and Volker, room 214B of the 4825 Troost Building and is accessible 24 hours a day.

Each day incidents from the previous day are made available on an incident log located in the Communications Office of the Police Department at 4825 Troost, room 214B. The incident log is distributed to key staff, other law enforcement agencies, and, if necessary, to the prosecuting attorney.

Confidential Reporting Procedures

If you are the victim of a crime and do not want to pursue action within the University system or the criminal justice system, you may still want to consider making a confidential report. With your permission, the UMKC Police Department can file a report on the details of the incident without revealing your identity. The purpose of a confidential report is to comply with your wish to keep the matter confidential, while taking steps to ensure the future safety of yourself and others. With such information, the University can keep an accurate record of the number of incidents involving students, employees and visitors; determine where there is a pattern of crime with regard to a particular location, method, or assailant; and alert the campus community to potential danger. Reports filed in this manner are counted and disclosed in the annual crime statistics for the institution.

Timely Warning Policy

In addition to the yearly statistics provided in this booklet and on our web site, our department will make periodic reports, or Crime Alerts, to the campus community of recent crimes that may affect the quality of life in the campus area. These reports may include crime prevention recommendations and are intended to raise awareness regarding criminal activity so that the community can increase or implement personal safety strategies.

Crime Alerts may be disseminated via campus e-mail, voice mail, posted in selected offices on campus, including student public areas, residence halls, and campus building liaisons, U-News newspaper, and the UMKC Police website at www.umkc.edu/adminfinance/police

Crime Prevention

The University Police Department makes every effort to be proactive to reduce and prevent crime. Some efforts are:

- Emergency Telephones Located on the Parking Lots
- 24-Hour Preventative Patrol
- Intrusion Alarms in Key Areas
- Property Engraving Program
- Crime Prevention Seminars
- Crime Prevention Materials
- Bicycle Registration

Your Role in Preventing Crime

A high percentage of campus crimes are incidents of opportunity. Often, faculty, staff and students unknowingly contribute to crimes of opportunity by placing themselves or their property at risk. Prevention efforts can be effective in reducing the opportunities for criminal activity. You play a key role in crime prevention efforts. Be cautious, careful, and alert to your own safety and protective of your possessions and University property.

In addition to preventing crime, considerable effort is devoted to crime intervention.

Prevention Tips

- Do not hesitate to call police when confronted.
- Keep your residence room locked.
- At night, walk in groups of at least two and stay on main walkways.
- Familiarize yourself with the location of emergency phones.
- When parking, remove valuables from view and lock your vehicle.
- Engrave your valuables with your driver's license number and record serial numbers.
- Make copies of credit cards and other valuables in your wallet.
- Report all losses to University Police immediately.

- Stay in control. Do not allow the abuse of alcohol or other substances to put you at risk.
- Do not leave personal property unattended.
- Be aware of your surroundings and what is going on around you.
- Do not hesitate to report suspicious individuals or activity to the University Police.

Crime Prevention Presentations and Training

In 2008, some of the crime prevention programs and workshops presented by the University Police included:

- New student orientations
- Parent orientation programs
- Transfer student orientations
- New faculty orientation
- Special workshops on personal safety for UMKC's Human Resources Office
- Fraternity and sorority programs
- Men and women residence hall members (given every year in the first two weeks of school)
- Alcohol abuse programs
- Student Activities' fairs
- Residence Hall Resident Assistant's Workshop
- RAD System, Rape Aggression and Defense Workshops

The UMKC Police presented more than two-dozen crime prevention and personal safety workshops and seminars, and will conduct presentations at any time upon request or on a regularly scheduled basis.

Please remember security is everyone's business.

Sexual Assault Policy Statement

UMKC does not have a rape and sexual assault policy but recognizes that sexual assault is a serious issue, and will not tolerate acts of sexual assault on campus. The University will investigate all allegations of sexual assault and take appropriate disciplinary, criminal, or legal action, with prior consent of the victim.

As soon as convenient, the victim of a sexual assault should report the incident to the **University Police, 9-1-1, or 235-1515**. If the sexual assault occurred off campus, the victim may still call UMKC Police. If the victim chooses, UMKC Police will notify the appropriate agency to handle the investigation. The victim should make every attempt to preserve any physical evidence of the assault. This may include a voluntary medical exam, not showering, or disposing of any damaged clothing, or other items that are present after/during the assault. Victims are encouraged to call any law enforcement agency by dialing 9-1-1 after a sexual assault for crime investigation, referral or transport for medical treatment, and referral crisis counseling and legal advocacy.

The University Police, with the victim's consent, will immediately conduct a criminal investigation of a reported sexual assault. They will also contact a crisis-counselor, if the victim wishes. Disciplinary actions may be imposed on recognized individual students, student organizations, and/or university

faculty and staff found responsible for a sexual assault. University sanctions following campus disciplinary procedures depend on the outcome and may range from suspension to expulsion. Every effort will be made to criminally prosecute perpetrators of sexual assaults. The accuser and the accused are entitled to the same opportunities to have others present during a campus disciplinary proceeding and both shall be informed of the outcome of the proceeding.

After an alleged sexual assault incident occurs, the University will assist the victim in changing academic and living situations if so requested and if such changes are reasonably available. Individuals, groups and organizations that desire information or programs that address sexual assaults and how to prevent such incidents should contact the UMKC Police.

If you become the victim of a sexual assault on or off campus:

- GET to a safe place
- CONTACT the University Police (or your local police if off campus) by dialing 9-1-1
- DO NOT shower, bathe, douche, change or destroy clothing
- DO NOT straighten up the area where the assault took place
- SEEK medical attention; locally, St. Luke's Hospital, 4401 Wornall Road, 816-932-2000.
- SEEK support and assistance:
 - UMKC Counseling Center, www.umkc.edu/chtc/, 816-235-1635
 - Women's Center, www.umkc.edu/womenctr/, 816-235-1638
 - Metropolitan Organization to Counter Sexual Assault (MOCSA) www.mocsa.org
 - Office: 816-931-4527
 - 24-Hour Crisis Line, 816-531-0233
- UMKC Student Health & Wellness can provide emergency contraception and check for and treat STD's, www.umkc.edu/chtc/health, 816-235-6133

Registered Sex Offender Information

The Missouri Sex Offender Registry can be accessed through the Missouri State Highway Patrol's website. Registered sex offenders throughout the state are posted along with their name, address, date of birth and a photo to identify the offender. Information about the offense is also available.

www.MSHP.DPS.MISSOURI.GOV

Please feel free to call the hotline number if you have questions about the offenders in your area.

1-888-767-6747

Telephone numbers for information on registered sex offenders by county are:

- Jackson County sexual offender's data is 816-524-4302.
- Platte County sexual offender's data is 816-858-2424.
- Cass County sexual offender's data is 816-380-5200.
- Clay County sexual offender's data is 816-792-7614.

To search for offenders anywhere in the United States, try searching the National Sex Offender Registry at: www.nsopr.gov

Sexual Harassment Policy

The University of Missouri uses information, education and guidance to increase awareness of the problem of sexual harassment.

It is the policy of the University of Missouri, in accord with providing a positive, discrimination-free environment, that sexual harassment in the work place or the educational environment is unacceptable conduct. Sexual harassment is subject to discipline, up to and including separation from the institution.

Sexual harassment is defined for this policy as either:

- Unwelcome sexual advances or requests for sexual activity by a University employee in a position of power or authority to a University employee or a member of the student body.
- Other unwelcome verbal or physical conduct of a sexual nature by a University employee or a member of the student body to a University employee or a member of the student body. This happens when:
 - Submission to or rejection of such conduct is used explicitly or implicitly as a condition for academic or employment decisions.
 - The purpose or effect of such conduct is to interfere unreasonably with the work or academic performance of the person being harassed.
 - The purpose or effect of such conduct to a reasonable person is to create an intimidating, hostile or offensive environment.

This policy also prohibits retaliation against any person who brings an accusation of discrimination or sexual harassment or who assists with the investigation or resolution of sexual harassment.

Notwithstanding this provision, the University may discipline an employee or student who has been determined to have brought an accusation of sexual harassment in bad faith.

Members of the University community who believe they have been sexually harassed may seek redress, using the following options:

- Pursue appropriate informal resolution procedures as defined by the individual campuses. These procedures are available from the campus affirmative action/equal opportunity officer.
- Initiate a complaint or grievance within the time prescribed by the applicable grievance procedure. Faculty are referred to Section 370.010, "Academic Grievance Procedures;" staff to Section 380.010, "Grievance Procedure for Administrative, Service and Support Staff;" and students to Section 390.010, "Discrimination Grievance Procedure for Students." Pursuing a complaint or informal resolution procedure does not compromise one's right to initiate a grievance or seek redress under state or federal law.

Upon receiving an accusation of sexual harassment against a member of the faculty, staff or student body, the University will investigate, and if substantiated, will initiate the appropriate disciplinary procedures. There is a five-year limitation period from the date of occurrence for filing a charge that may lead to discipline. An individual who makes an accusation of sexual harassment will be informed:

- At the close of the investigation, whether or not disciplinary procedures will be initiated.
- And at the end of any disciplinary procedures, of the discipline imposed, if any.

Alcohol and Drugs

University police officers enforce laws regulating the use of alcoholic beverages and underage drinking. UMKC is committed to maintaining a safe and healthy environment for the campus community. Alcohol and other drugs should not interfere with the University's educational mission. All UMKC students, faculty members, staff members, and administrators are subject to local, state and federal laws regarding the unlawful possession, distribution, or use of alcohol or illegal drugs. Violations of University of Missouri regulations can result in disciplinary action up to and including expulsion for students and discharge for employees.

Alcohol Policy

The use or possession of any alcoholic beverage is strictly prohibited on all University property except where appropriate University approval is given, subject to legal requirements. Guidelines for alcohol use are available at the Student Life Office, located on the ground floor of the University Center. To request the use of alcoholic beverages, individuals should inquire at the Office of Student Auxiliary Services located in the University Center, phone (816) 235-1411.

Additional information about the UMKC alcohol policy is available in the student handbook, which is accessible on line at <http://www.umkc.edu/handbook>

Drug Policy

University of Missouri regulations prohibit the unlawful possession, use, distribution, manufacture, and sale of alcoholic beverages and illicit drugs without proper prescription or required license or as expressly permitted by law or University regulations, including operating a vehicle on University property, or on streets or roadways adjacent to and abutting a campus, under the influence of alcohol or a controlled substance as prohibited by law of the State of Missouri.

Additional information about the UMKC drug policy is available in the student handbook, which is accessible on line at <http://www.umkc.edu/handbook>

Alcohol or Substance Abuse Assistance

A variety of resources exist for drug and alcohol counseling, treatment and rehabilitation programs. For detailed information concerning these resources available from the University and community agencies, students can contact the University Counseling, Health and Testing Center at (816) 235-1635, and employees can contact the Department of Human Resources at (816) 235-1621. Such referrals will be confidential.

Campus Facilities Access

It is the policy of the University of Missouri-Kansas City that other than normal working hours, all buildings shall be locked to maintain the security of the buildings and their contents. Staff members and students may be issued keys to University buildings upon recommendation of the department chair or administrative head, in accordance with established procedures. Keys are issued for entry to University buildings for the purpose of conducting University business only.

All faculty, staff or students who are not issued a key may gain access to a specific area of a specific building in accordance with the following procedure:

- Written and signed permission from the dean, director, or departmental head of the specified location. This written and signed authorization shall be filed with the University Police at least 24 hours in advance. Anyone not on the authorization list and in the specified location will be asked to leave.
- An authorized individual entering or leaving a locked building shall not permit any individual to enter who would not normally be permitted to enter the building during the hours it is locked. Authorized individuals may have guests with them as long as the guests stay in the proximity of faculty or staff members having the assigned key and the authorized individual assumes full responsibility for their presence.
- An individual entering or leaving a locked building shall be responsible for securing the door and may be held responsible for any damage to University property resulting from non-secured doors.
- The loss or theft of any key is to be reported immediately to the department chair or administrative head who in turn will notify Campus Facilities Management and Campus Police.
- All faculty, staff and students are to have their University identification with them while on campus. Also, they should produce the identification upon request from the University Police.
- Situations that individuals perceive as security hazards are requested to report these to the University Police or Campus Facilities Management.

Residence Hall students should never prop locked doors open or loan their residence hall keys to anyone. Students are to make themselves familiar with Residence Hall policies concerning visitors, after-hour admittance and general security policies. These policies and rules can be obtained from their resident assistant, resident manager or the Housing Office. Other security tips to remember include:

- Ask strangers to wait in common areas while their friends are summoned.
- Lock your room door and windows when you leave, even if only for a minute, and take your keys with you.
- Keep small valuable items out of sight, in a closed drawer, or another safe place.

- Politely offer assistance to persons in your building or residence you do not recognize. If they have legitimate business, they will appreciate your help. If they do not, ask them to leave.
- Keep your room locked when you are out during move-in. Do not leave your car unlocked when loading or unloading.
- Do not leave coats, books, or other valuable items in common areas. Keep them in your room.
- If you hear or see something suspicious, call the police immediately. Dial 911 for an emergency, or 235-1515 if it is a non-emergency.

Maintenance of Campus Facilities

The campus facilities are maintained by UMKC Campus Facilities Management and patrolled by the University Police. Campus Facilities Management maintains the University buildings, grounds and roadways with a concern for safety and security. They inspect campus facilities regularly, make repairs affecting safety and security, and respond to reports of potential safety and security hazards, such as broken windows, locks, and lighting. The police officers submit work orders for repair, recommend the trimming of shrubbery for safety reasons and conduct periodic lighting surveys. Officers report the need for replacement of lights and any other physical hazards. Periodic crime prevention surveys are conducted when a crime occurs or upon the physical change of office space and equipment when requested by an administrator. Call Campus Facilities Management, (816) 235-1354, during business hours or the University Police after hours to report any safety or security hazard in or around campus buildings, grounds or roadways.

UMKC Campus and Emergency Telephone Locations

Blue light emergency telephones (EMER) are located strategically throughout campus. These phones provide the caller a direct line to the UMKC Police. The dispatcher simultaneously receives a display indicating the location of the caller. The elevator telephones (ELEV) work in the same manner. The regular campus telephones (CP) require dialing 1515 to contact UMKC Police. The UMKC Police Department encourages everyone to become familiar with the location of these phones and to report any suspicious activities.

3365	CP	1st Fl Education	5151	CP	Cherry St Res Hall Lobby
3096	ELEV	4747 Troost	5152	CP	Cherry St Res Hall Lobby
3545	EMER	4747 Troost	3332	CP	Cherry Street RH Grd FL
3245	CP	4747 Troost 1st Fl	3613	ELEV	Cockefair Hall
3627	ELEV	4825 Troost	3510	EMER	Cockefair Hall
3384	CP	4825 Troost 1st Fl	3363	CP	Cockefair 1st Fl
3546	EMER	4825 Troost Ft Dr	4045	CP	Dental 2nd FL
3543	EMER	5322 Troost	3615	ELEV	Dental School
3651	ELEV	AC Main East Side	3616	ELEV	Dental School
3852	ELEV	AC Main West Side	3547	EMER	Dental Sidewalk
3690	ELEV	AC North	3143	CP	Dock Area Med School
3017	ELEV	AC South	3617	ELEV	Education
3342	CP	Admin Ctr 1st Fl West	3508	EMER	Education
3386	CP	Admin Ctr 2nd Fl West	3380	CP	Education Grnd Fl East
3506	EMER	Area 24 North	3313	CP	Epperson House
3734	EMER	Area 26 Oak St Dr	3737	ELEV	FH
1390	CP	Bio. 4th Fl	3306	CP	FH 3rd Fl Lounge
3614	ELEV	Biology	3307	CP	FH 5th Fl Lounge
3515	EMER	Bixby Lane Walk	3736	EMER	FH East
3732	ELEV	Bloch School	3735	EMER	FH West
3385	CP	Bloch School 1st Fl	3618	ELEV	Fine Arts
3518	EMER	Bloch/Law	3505	EMER	Fine Arts
3673	ELEV	Bookstore	3343	CP	Fine Arts 2 nd Floor
1455	CP	Chem 1st Fl	3357	CP	Flarsheim 4 th Fl.
3398	CP	Chem 2nd Fl	3733	ELEV	Grant Hall
1456	CP	Chem 3rd Fl	3509	EMER	Grant Hall
1399	CP	Chem 4th Fl	3376	CP	Grant Hall 2nd Fl East
1458	CP	Chem 5th Fl	3633	ELEV	Haag Hall
3511	EMER	Chem/Bio	3379	CP	Haag Hall 1 st Fl East
3626	ELEV	Chemistry	3782	CP	HSB 1200
3517	CP	Cherry St Res 1st Fl	3783	CP	HSB 2100
3555	CP	Cherry St Res 2nd Fl	3784	CP	HSB 3220
3560	CP	Cherry St Res 3rd Fl	3786	CP	HSB 4300
3631	ELEV	Cherry St Res Hall	3788	CP	HSB 5300

3623	ELEV	Katz Pharm	3565	CP	Oak Res Rm 2036
3207	CP	Katz Pharm 1st FL W	3566	CP	Oak Res Rm 2055
3620	ELEV	Law School	3567	CP	Oak Res Rm 2083
3373	CP	Law School 1st Fl	3569	CP	Oak Res Rm 3020
3206	CP	Lobby U-Center	3581	CP	Oak Res Rm 3051
3810	ELEV	Manheim Hall	3579	CP	Oak Res Rm 4034
3371	CP	Manheim Hall 2nd Fl West	3582	CP	Oak Res Rm 4104
3554	EMER	Med Lot 66 Lower Level	3583	CP	Oak Res Rm 5051
3676	ELEV	Med Parking	3584	CP	Oak Res Rm 5101
3677	ELEV	Med Parking	3632	ELEV	Oak St Res Hall
3738	EMER	Med Parking 1st Fl North	3640	ELEV	Oak St Res Hall
3750	EMER	Med Parking 1st Fl South	3500	EMER	Oak St. Parking Area 32 Level 3
3739	EMER	Med Parking 2nd Fl North	3501	EMER	Oak St. Parking Area 32 Level 4
3744	EMER	Med Parking 2nd Fl South	3502	EMER	Oak St. Parking Area 32 Level 5
3740	EMER	Med Parking 3rd Fl North	3324	EMER	Old Health Science Bldg.
3745	EMER	Med Parking 3rd Fl South	3512	EMER	Old Maintenance Bldg.
3741	EMER	Med Parking 4th Fl North	3624	ELEV	PAC
3746	EMER	Med Parking 4th Fl South	3678	EMER	PAC 1st Fl
3742	EMER	Med Parking 5th Fl North	3679	EMER	PAC 2nd FL
3747	EMER	Med Parking 5th Fl South	3503	EMER	PAC SW Entrance
3743	EMER	Med Parking 6th Fl North	3514	EMER	Parking Area 28A
3748	EMER	Med Parking 6th Fl South	3244	CP	Performing Arts lobby
3751	EMER	Med Parking 7th Fl North	3471	CP	Pharm Dock Phone NHSB
3749	EMER	Med Parking 7th Fl South	3267	CP	Residence Hall Entry
3621	ELEV	Med School East	3877	ELEV	Rockhill Parking
4110	EMER	Med School Upper	3866	EMER	Rockhill Parking 1st Fl N E
3622	ELEV	Med School West	3864	EMER	Rockhill Parking 1st Fl N W
3672	ELEV	MN Library	3865	EMER	Rockhill Parking 1st Fl S E
3619	ELEV	MN Library (Staff)	3867	EMER	Rockhill Parking 2nd Fl N E
3378	CP	MN Library 1st Fl	3863	EMER	Rockhill Parking 2nd Fl N W
3399	CP	MN Library 2nd Fl	3868	EMER	Rockhill Parking 2nd Fl S E
3396	CP	MN Library 3rd Fl	3869	EMER	Rockhill Parking 3rd Fl N E
3397	CP	MN Library 4th Fl	3862	EMER	Rockhill Parking 3rd Fl N W
3140	CP	MN Library Grnd Fl	3870	EMER	Rockhill Parking 3rd Fl S E
3758	ELEV	New Health Sci. Bldg.	3872	EMER	Rockhill Parking 4th Fl N E
3759	ELEV	New Health Sci. Bldg.	3861	EMER	Rockhill Parking 4th Fl N W
3760	ELEV	New Health Sci. Bldg.	3871	EMER	Rockhill Parking 4th Fl S E
3325	EMER	New Health Sci. Bldg.North	3874	EMER	Rockhill Parking 5th Fl N E
3321	EMER	New Health Sci. Bldg.South	3875	EMER	Rockhill Parking 5th Fl N W
3650	ELEV	Newcomb Hall	3873	EMER	Rockhill Parking 5th Fl S E
3507	EMER	Newcomb Hall	3625	ELEV	Royal Hall
3978	EMER	Nursing Annex	3377	CP	Royal Hall 1 st Fl Lounge
3564	CP	Oak Res Rm 2006	3382	CP	S.A.S.S.

3504	EMER	S.A.S.S.
3628	ELEV	Scofield Hall
3315	CP	Scofield Hall Grnd Fl
3088	CP	Sec. Phone Med School N.entry
3089	CP	Sec. Phone Med School S.entry
3731	ELEV	SRC
3513	EMER	SRC
3697	EMER	SRC Control Desk
3708	EMER	SRC Men Locker Rm Hdcp Acss
3549	EMER	SRC Men's Locker Rm
3699	CP	SRC Men's Locker Room
3694	EMER	SRC Swimming Pool
3707	EMER	SRC Women Locker Hdcp Acss
3548	EMER	SRC Women's Locker Rm
3698	CP	SRC Women's Locker Room
3375	CP	Swinney Rec 2nd Fl Lounge
3629	ELEV	Toy Museum
3630	ELEV	U-Center
3381	CP	U-Center 1st Fl East
3389	CP	U-Center Faculty/Staff Lounge
3374	CP	U-Center W. Lobby
3106	ELEV	Univ Way East
3107	ELEV	Univ Way West

Important UMKC Phone Numbers

Emergency	9-1-1
Police Department	(816) 235-1515
Parking Operations	(816) 235-5256
Counseling Center	(816) 235-1635
Student Health & Wellness	(816) 235-6133
Women's Center	(816) 235-1638
Student Housing	(816) 235-8840
Student Life Office	(816) 235-1407
HelpLine	(816) 235-2222

Victim's Rights

For information on victim's rights the Missouri Attorney General's Website offers free brochures and other information on this topic at:

<http://www.ago.mo.gov/crimevictims/crimevictims.htm>

UMKC Alert – Emergency Notification

To learn about and sign up for the UMKC Emergency Notification System, go to:

<http://www.umkc.edu/umkcalert/default.asp>

Annual Crime Statistics

The following pages contain crime statistics from past years. The definitions list, following after these statistics, was used to determine these crime statistics.

These numbers reflect crimes reported to the UMKC Police Department and numbers reported to the UMKC Police Department by Local Law Enforcement (Kansas City Police Department) and campus security authorities (Student Life, Residential Life, & other campus groups.)

Crimes are recorded in the calendar year they were reported. This report does not use a map to depict its campus, non-campus buildings or property, and public property areas.

2008 Crime Statistics

Total Crimes								Non-Campus						
Reported For:	UMKC Campus						Building or Property							
Offense Type (includes attempts)	Reported to						Sub- Total	Reported to						Sub- Total
	UMKC Police		Non- Police		Local Police			UMKC Police		Non- Police		Local Police		
	Volker	HSC	Volker	HSC	Volker	HSC		Volker	HSC	Volker	HSC	Volker	HSC	
Murder	0	0	0	0	0	0	0	0	0	0	0	0	0	0
Manslaughter	0	0	0	0	0	0	0	0	0	0	0	0	0	0
Forcible Sex Offenses	0	0	0	0	0	0	0	0	0	0	0	0	0	0
Non-Forcible Sex Offenses	0	0	0	0	0	0	0	0	0	0	0	0	0	0
Robbery	3	0	0	0	1	0	4	0	0	0	0	0	0	0
Aggravated Assault	1	0	0	0	0	0	1	0	0	0	0	0	0	0
Burglary	20	0	0	0	4	0	24	0	0	0	0	0	0	0
Motor Vehicle Theft	5	0	0	0	0	0	5	0	0	0	0	0	0	0
Arson	0	0	0	0	0	0	0	0	0	0	0	0	0	0
Hate Crimes (by prejudices)														
Race	0	0	0	0	0	0	0	0	0	0	0	0	0	0
Gender	0	0	0	0	0	0	0	0	0	0	0	0	0	0
Religion	0	0	0	0	0	0	0	0	0	0	0	0	0	0
Sex Orientation	1	0	0	0	0	0	1	0	0	0	0	0	0	0
Ethnicity	0	0	0	0	0	0	0	0	0	0	0	0	0	0
Disability	0	0	0	0	0	0	0	0	0	0	0	0	0	0

Liquor Law Violations														
Arrest	2	0	0	0	0	0	2	0	0	0	0	0	0	0
Referral	0	0	66	0	0	0	66	0	0	0	0	0	0	0
Drug Law Violations														
Arrest	3	0	0	0	0	0	3	0	0	0	0	0	0	0
Referral	0	0	3	0	0	0	3	0	0	0	0	0	0	0
Weapons Law Violations														
Arrest	0	0	0	0	0	0	0	0	0	0	0	0	0	0
Referral	0	0	0	0	0	0	0	0	0	0	0	0	0	0

Total Crimes								On Campus				
Reported For:		Public Property						2008 GRAND TOTAL	Residential Only			SECTION TOTAL
Offense Type (includes attempts)	Reported to						Sub- Total		Reported to			
	UMKC Police		Non- Police		Local Police				UMKC Police	Non- Police	Local Police	
	Volker	HSC	Volker	HSC	Volker	HSC						
Murder	0	0	0	0	0	0	0	0	0	0	0	0
Manslaughter	0	0	0	0	0	0	0	0	0	0	0	0
Forcible Sex Offenses	0	0	0	0	0	0	0	0	0	0	0	0
Non-Forcible Sex Offenses	0	0	0	0	0	0	0	0	0	0	0	0
Robbery	0	0	0	0	1	0	1	5	1	0	0	1
Aggravated Assault	0	0	0	0	0	0	0	1	1	0	0	1
Burglary	0	0	0	0	0	0	0	24	4	0	0	4
Motor Vehicle Theft	0	0	0	0	3	0	3	8	0	0	0	0
Arson	0	0	0	0	0	0	0	0	0	0	0	0
Hate Crimes (by prejudices)												
Race	0	0	0	0	0	0	0	0	0	0	0	0
Gender	0	0	0	0	0	0	0	0	0	0	0	0
Religion	0	0	0	0	0	0	0	0	0	0	0	0
Sex Orientation	0	0	0	0	0	0	0	1	1	0	0	1
Ethnicity	0	0	0	0	0	0	0	0	0	0	0	0
Disability	0	0	0	0	0	0	0	0	0	0	0	0
Liquor Law Violations												
Arrest	5	0	0	0	0	0	5	7	2	0	0	2
Referral	0	0	0	0	0	0	0	66	0	66	0	66
Drug Law Violations												
Arrest	4	0	0	0	0	0	4	7	1	0	0	1
Referral	0	0	0	0	0	0	0	3	3	0	0	3
Weapons Law Violations												
Arrest	0	0	0	0	0	0	0	0	0	0	0	0
Referral	0	0	0	0	0	0	0	0	0	0	0	0

2007 Crime Statistics

Total Crimes								Non-Campus							
Reported For:								UMKC Campus				Building or Property			
Offense Type (includes attempts)	Reported to						Sub- Total	Reported to						Sub- Total	
	UMKC Police		Non- Police		Local Police			UMKC Police		Non- Police		Local Police			
	Volker	HSC	Volker	HSC	Volker	HSC		Volker	HSC	Volker	HSC	Volker	HSC		
Murder	0	0	0	0	0	0	0	0	0	0	0	0	0	0	
Manslaughter	0	0	0	0	0	0	0	0	0	0	0	0	0	0	
Forcible Sex Offenses	0	0	0	0	0	0	0	0	0	0	0	0	0	0	
Non-Forcible Sex Offenses	1	0	0	0	0	0	1	0	0	0	0	0	0	0	
Robbery	0	0	0	0	0	0	0	0	0	0	0	0	0	0	
Aggravated Assault	2	0	0	0	0	0	2	0	0	0	0	0	0	0	
Burglary	20	5	0	0	0	0	25	0	0	0	0	0	0	0	
Motor Vehicle Theft	4	1	0	0	0	0	5	0	0	0	0	0	0	0	
Arson	0	0	0	0	0	0	0	0	0	0	0	0	0	0	
Hate Crimes (by prejudices)															
Race	0	0	0	0	0	0	0	0	0	0	0	0	0	0	
Gender	0	0	0	0	0	0	0	0	0	0	0	0	0	0	
Religion	0	0	0	0	0	0	0	0	0	0	0	0	0	0	
Sex Orientation	0	0	0	0	0	0	0	0	0	0	0	0	0	0	
Ethnicity	0	0	0	0	0	0	0	0	0	0	0	0	0	0	
Disability	0	0	0	0	0	0	0	0	0	0	0	0	0	0	

Liquor Law Violations														
Arrest	0	0	0	0	0	0	0	0	0	0	0	0	0	0
Referral	0	0	47	0	0	0	47	0	0	0	0	0	0	0
Drug Law Violations														
Arrest	4	0	0	0	0	0	4	0	0	0	0	0	0	0
Referral	2	0	2	0	0	0	4	0	0	0	0	0	0	0
Weapons Law Violations														
Arrest	2	0	0	0	0	0	2	0	0	0	0	0	0	0
Referral	0	0	0	0	0	0	0	0	0	0	0	0	0	0

Total Crimes								On Campus				
Reported For:		Public Property						2007 GRAND TOTAL	Residential Only			SECTION TOTAL
Offense Type (includes attempts)	Reported to						Sub- Total		Reported to			
	UMKC Police		Non- Police		Local Police				UMKC Police	Non- Police	Local Police	
	Volker	HSC	Volker	HSC	Volker	HSC						
Murder	0	0	0	0	0	0	0	0	0	0	0	
Manslaughter	0	0	0	0	0	0	0	0	0	0	0	
Forcible Sex Offenses	0	0	0	0	1	0	1	1	0	0	0	
Non-Forcible Sex Offenses	0	0	0	0	0	0	0	1	0	0	0	
Robbery	0	0	0	0	2	1	3	3	0	0	0	
Aggravated Assault	0	0	0	0	0	1	1	3	1	0	0	
Burglary	0	0	0	0	0	0	0	25	7	0	0	
Motor Vehicle Theft	0	0	0	0	7	2	9	14	0	0	0	
Arson	0	0	0	0	0	0	0	0	0	0	0	
Hate Crimes (by prejudices)												
Race	0	0	0	0	0	0	0	0	0	0	0	
Gender	0	0	0	0	0	0	0	0	0	0	0	
Religion	0	0	0	0	0	0	0	0	0	0	0	
Sex Orientation	0	0	0	0	0	0	0	0	0	0	0	
Ethnicity	0	0	0	0	0	0	0	0	0	0	0	
Disability	0	0	0	0	0	0	0	0	0	0	0	
Liquor Law Violations												
Arrest	1	0	0	0	0	0	1	3	0	0	0	
Referral	0	0	0	0	0	0	0	47	0	47	0	
Drug Law Violations												
Arrest	3	0	0	0	0	0	3	8	3	0	0	
Referral	0	0	0	0	0	0	0	5	0	2	0	
Weapons Law Violations												
Arrest	0	0	0	0	0	0	0	2	1	0	0	
Referral	0	0	0	0	0	0	0	1	0	0	0	

2006 Crime Statistics

Total Crimes								Non-Campus							
Reported For:								UMKC Campus				Building or Property			
Offense Type (includes attempts)	Reported to						Sub- Total	Reported to						Sub- Total	
	UMKC Police		Non- Police		Local Police			UMKC Police		Non- Police		Local Police			
	Volker	HSC	Volker	HSC	Volker	HSC		Volker	HSC	Volker	HSC	Volker	HSC		
Murder	0	0	0	0	0	0	0	0	0	0	0	0	0	0	
Manslaughter	0	0	0	0	0	0	0	0	0	0	0	0	0	0	
Forcible Sex Offenses	0	0	0	0	0	0	0	0	0	0	0	0	0	0	
Non-Forcible Sex Offenses	0	0	0	0	0	0	0	0	0	0	0	0	0	0	
Robbery	1	0	0	0	0	0	1	0	0	0	0	0	0	0	
Aggravated Assault	1	0	0	0	0	0	1	0	0	0	0	0	0	0	
Burglary	31	10	0	0	6	0	47	0	0	0	0	0	0	0	
Motor Vehicle Theft	10	1	0	0	0	0	11	0	0	0	0	0	0	0	
Arson	2	0	0	0	0	0	2	0	0	0	0	0	0	0	
Hate Crimes (by prejudices)															
Race	0	0	0	0	0	0	0	0	0	0	0	0	0	0	
Gender	0	0	0	0	0	0	0	0	0	0	0	0	0	0	
Religion	0	0	0	0	0	0	0	0	0	0	0	0	0	0	
Sex Orientation	0	0	0	0	0	0	0	0	0	0	0	0	0	0	
Ethnicity	0	0	0	0	0	0	0	0	0	0	0	0	0	0	
Disability	0	0	0	0	0	0	0	0	0	0	0	0	0	0	

Liquor Law Violations														
Arrest	1	0	0	0	0	0	1	0	0	0	0	0	0	0
Referral	0	0	33	0	0	0	33	0	0	0	0	0	0	0
Drug Law Violations														
Arrest	5	0	0	0	0	0	5	0	0	0	0	0	0	0
Referral	2	0	3	0	0	0	5	0	0	0	0	0	0	0
Weapons Law Violations														
Arrest	1	0	0	0	0	0	1	0	0	0	0	0	0	0
Referral	1	0	0	0	0	0	1	0	0	0	0	0	0	0

Total Crimes								On Campus				
Reported For:		Public Property						2006 GRAND TOTAL	Residential Only			SECTION TOTAL
Offense Type (includes attempts)	Reported to						Sub- Total		Reported to			
	UMKC Police		Non- Police		Local Police				UMKC Police	Non- Police	Local Police	
	Volker	HSC	Volker	HSC	Volker	HSC						
Murder	0	0	0	0	0	0	0	0	0	0	0	
Manslaughter	0	0	0	0	0	0	0	0	0	0	0	
Forcible Sex Offenses	0	0	0	0	0	0	0	0	0	0	0	
Non-Forcible Sex Offenses	0	0	0	0	0	0	0	0	0	0	0	
Robbery	0	0	0	0	0	0	0	1	0	0	0	
Aggravated Assault	0	0	0	0	0	0	0	1	1	0	0	
Burglary	0	0	0	0	2	0	2	49	8	0	0	
Motor Vehicle Theft	0	0	0	0	3	0	3	14	0	0	0	
Arson	0	0	0	0	0	0	0	2	1	0	0	
Hate Crimes (by prejudices)												
Race	0	0	0	0	0	0	0	0	0	0	0	
Gender	0	0	0	0	0	0	0	0	0	0	0	
Religion	0	0	0	0	0	0	0	0	0	0	0	
Sex Orientation	0	0	0	0	0	0	0	0	0	0	0	
Ethnicity	0	0	0	0	0	0	0	0	0	0	0	
Disability	0	0	0	0	0	0	0	0	0	0	0	
Liquor Law Violations												
Arrest	1	0	0	0	0	0	1	2	1	0	0	
Referral	0	0	0	0	0	0	0	33	33	0	0	
Drug Law Violations												
Arrest	3	0	0	0	0	0	3	8	5	0	0	
Referral	0	0	0	0	0	0	0	5	5	0	0	
Weapons Law Violations												
Arrest	0	0	0	0	0	0	0	1	1	0	0	
Referral	0	0	0	0	0	0	0	1	1	0	0	

2005 Crime Statistics

Total Crimes								Non-Campus							
Reported For: UMKC Campus								Building or Property							
Offense Type (includes attempts)	Reported to						Sub- Total	Reported to						Sub- Total	
	UMKC		Non-		Local			UMKC		Non-		Local			
	Police		Police		Police			Police		Police		Police			
	Volker	HSC	Volker	HSC	Volker	HSC		Volker	HSC	Volker	HSC	Volker	HSC		
Murder	0	0	0	0	0	0	0	0	0	0	0	0	0	0	
Manslaughter	0	0	0	0	0	0	0	0	0	0	0	0	0	0	
Forcible Sex Offenses	4	0	0	0	0	0	4	0	0	0	0	0	0	0	
Non-Forcible Sex Offenses	0	0	0	0	0	0	0	0	0	0	0	0	0	0	
Robbery	2	0	0	0	1	0	3	0	0	0	0	0	0	0	
Aggravated Assault	0	0	0	0	0	0	0	0	0	0	0	0	0	0	
Burglary	39	4	0	0	3	0	46	0	2	0	0	0	0	2	
Motor Vehicle Theft	7	2	0	0	1	0	10	0	0	0	0	0	0	0	
Arson	0	0	0	0	0	0	0	0	0	0	0	0	0	0	
Hate Crimes (by prejudices)															
Race	0	0	0	0	0	0	0	0	0	0	0	0	0	0	
Gender	0	0	0	0	0	0	0	0	0	0	0	0	0	0	
Religion	0	0	0	0	0	0	0	0	0	0	0	0	0	0	
Sex Orientation	0	0	0	0	0	0	0	0	0	0	0	0	0	0	
Ethnicity	0	0	0	0	0	0	0	0	0	0	0	0	0	0	
Disability	0	0	0	0	0	0	0	0	0	0	0	0	0	0	

Liquor Law Violations														
Arrest	0	0	0	0	0	0	0	0	0	0	0	0	0	0
Referral	1	0	0	0	0	0	1	0	0	0	0	0	0	0
Drug Law Violations														
Arrest	3	0	0	0	0	0	3	0	0	0	0	0	0	0
Referral	0	0	0	0	0	0	0	0	0	0	0	0	0	0
Weapons Law Violations														
Arrest	0	0	0	0	0	0	0	0	0	0	0	0	0	0
Referral	0	0	0	0	0	0	0	0	0	0	0	0	0	0

Total Crimes								On Campus				
Reported For:	Public Property						2005 GRAND TOTAL	Residential Only				
Offense Type (includes attempts)	Reported to							Sub- Total	Reported to			SECTION TOTAL
	UMKC Police		Non- Police		Local Police				UMKC Police	Non- Police	Local Police	
	Volker	HSC	Volker	HSC	Volker	HSC						
Murder	0	0	0	0	0	0	0	0	0	0	0	0
Manslaughter	0	0	0	0	0	0	0	0	0	0	0	0
Forcible Sex Offenses	0	0	0	0	0	0	0	4	0	0	0	0
Non-Forcible Sex Offenses	0	0	0	0	0	0	0	0	0	0	0	0
Robbery	1	0	0	0	0	0	1	4	0	0	0	0
Aggravated Assault	0	0	0	0	1	0	1	1	0	0	0	0
Burglary	0	0	0	0	0	0	0	48	20	0	0	20
Motor Vehicle Theft	0	0	0	0	7	0	7	17	0	0	0	0
Arson	0	0	0	0	0	0	0	0	0	0	0	0
Hate Crimes (by prejudices)												
Race	0	0	0	0	0	0	0	0	0	0	0	0
Gender	0	0	0	0	0	0	0	0	0	0	0	0
Religion	0	0	0	0	0	0	0	0	0	0	0	0
Sex Orientation	0	0	0	0	0	0	0	0	0	0	0	0
Ethnicity	0	0	0	0	0	0	0	0	0	0	0	0
Disability	0	0	0	0	0	0	0	0	0	0	0	0
Liquor Law Violations												
Arrest	0	0	0	0	0	0	0	0	0	0	0	0
Referral	0	0	0	0	0	0	0	1	1	0	0	1
Drug Law Violations												
Arrest	6	2	0	0	0	0	8	11	0	0	0	0
Referral	0	0	0	0	0	0	0	0	0	0	0	0
Weapons Law Violations												
Arrest	1	0	0	0	0	0	1	1	0	0	0	0
Referral	0	0	0	0	0	0	0	0	0	0	0	0

2004 Crime Statistics

Total Crimes								Non-Campus							
Reported For: UMKC Campus								Building or Property							
Offense Type (includes attempts)	Reported to						Sub- Total	Reported to						Sub- Total	
	UMKC		Non-		Local			UMKC		Non-		Local			
	Police		Police		Police			Police		Police		Police			
	Volker	HSC	Volker	HSC	Volker	HSC		Volker	HSC	Volker	HSC	Volker	HSC		
Murder	0	0	0	0	0	0	0	0	0	0	0	0	0	0	
Manslaughter	0	0	0	0	0	0	0	0	0	0	0	0	0	0	
Forcible Sex Offenses	3	0	0	0	0	0	3	0	0	0	0	0	0	0	
Non-Forcible Sex Offenses	0	0	0	0	0	0	0	0	0	0	0	0	0	0	
Robbery	2	1	0	0	0	0	3	0	0	0	0	0	0	0	
Aggravated Assault	2	0	0	0	0	0	2	0	0	0	0	0	0	0	
Burglary	52	8	0	0	1	0	61	1	0	0	0	5	0	6	
Motor Vehicle Theft	15	0	0	0	0	0	15	1	0	0	0	0	0	1	
Arson	0	0	0	0	0	0	0	0	0	0	0	0	0	0	
Hate Crimes (by prejudices)															
Race	0	0	0	0	0	0	0	0	0	0	0	0	0	0	
Gender	0	0	0	0	0	0	0	0	0	0	0	0	0	0	
Religion	0	0	0	0	0	0	0	0	0	0	0	0	0	0	
Sex Orientation	0	0	0	0	0	0	0	0	0	0	0	0	0	0	
Ethnicity	0	0	0	0	0	0	0	0	0	0	0	0	0	0	
Disability	0	0	0	0	0	0	0	0	0	0	0	0	0	0	

Liquor Law Violations														
Arrest	0	0	0	0	0	0	0	0	0	0	0	0	0	0
Referral	4	0	0	0	0	0	4	0	0	0	0	0	0	0
Drug Law Violations														
Arrest	4	0	0	0	0	0	4	0	0	0	0	0	0	0
Referral	3	0	0	0	0	0	3	0	0	0	0	0	0	0
Weapons Law Violations														
Arrest	0	0	0	0	0	0	0	0	0	0	0	0	0	0
Referral	0	0	0	0	0	0	0	0	0	0	0	0	0	0

Total Crimes								On Campus				
Reported For:		Public Property					2004	Residential Only				
Offense Type (includes attempts)	Reported to						Sub- Total	GRAND TOTAL	Reported to			SECTION TOTAL
	UMKC Police		Non- Police		Local Police				UMKC Police	Non- Police	Local Police	
	Volker	HSC	Volker	HSC	Volker	HSC						
Murder	0	0	0	0	0	0	0	0	0	0	0	0
Manslaughter	0	0	0	0	0	0	0	0	0	0	0	0
Forcible Sex Offenses	0	0	0	0	0	0	0	3	2	0	0	2
Non-Forcible Sex Offenses	0	0	0	0	0	0	0	0	0	0	0	0
Robbery	0	0	0	0	4	1	5	8	0	0	0	0
Aggravated Assault	1	0	0	0	4	0	5	7	1	0	0	1
Burglary	0	0	0	0	0	0	0	67	17	0	0	17
Motor Vehicle Theft	0	0	0	0	4	2	6	22	0	0	0	0
Arson	0	0	0	0	0	0	0	0	0	0	0	0
Hate Crimes (by prejudices)												
Race	0	0	0	0	0	0	0	0	0	0	0	0
Gender	0	0	0	0	0	0	0	0	0	0	0	0
Religion	0	0	0	0	0	0	0	0	0	0	0	0
Sex Orientation	0	0	0	0	0	0	0	0	0	0	0	0
Ethnicity	0	0	0	0	0	0	0	0	0	0	0	0
Disability	0	0	0	0	0	0	0	0	0	0	0	0
Liquor Law Violations												
Arrest	0	0	0	0	0	0	0	0	0	0	0	0
Referral	0	0	0	0	0	0	0	4	4	0	0	4
Drug Law Violations												
Arrest	1	0	0	0	0	0	1	5	4	0	0	4
Referral	0	0	0	0	0	0	0	3	3	0	0	3
Weapons Law Violations												
Arrest	0	0	0	0	0	0	0	0	0	0	0	0
Referral	0	0	0	0	0	0	0	0	0	0	0	0

2003 Crime Statistics

Total Crimes								Non-Campus							
Reported For:								UMKC Campus				Building or Property			
Offense Type (includes attempts)	Reported to						Sub- Total	Reported to						Sub- Total	
	UMKC Police		Non- Police		Local Police			UMKC Police		Non- Police		Local Police			
	Volker	HSC	Volker	HSC	Volker	HSC		Volker	HSC	Volker	HSC	Volker	HSC		
Murder	0	0	0	0	0	0	0	0	0	0	0	0	0	0	
Manslaughter	0	0	0	0	0	0	0	0	0	0	0	0	0	0	
Forcible Sex Offenses	1	0	0	0	0	0	1	0	0	0	0	0	0	0	
Non-Forcible Sex Offenses	0	0	0	0	0	0	0	0	0	0	0	0	0	0	
Robbery	1	0	0	0	0	0	1	0	0	0	0	1	0	1	
Aggravated Assault	1	0	0	0	1	0	2	0	0	0	0	0	0	0	
Burglary	41	1	0	0	3	0	45	0	0	0	0	1	0	1	
Motor Vehicle Theft	16	1	0	0	2	0	19	0	0	0	0	1	0	1	
Arson	0	0	0	0	0	0	0	0	0	0	0	0	0	0	
Hate Crimes (by prejudices)															
Race	0	0	0	0	0	0	0	0	0	0	0	0	0	0	
Gender	0	0	0	0	0	0	0	0	0	0	0	0	0	0	
Religion	0	0	0	0	0	0	0	0	0	0	0	0	0	0	
Sex Orientation	0	0	0	0	0	0	0	0	0	0	0	0	0	0	
Ethnicity	0	0	0	0	0	0	0	0	0	0	0	0	0	0	
Disability	0	0	0	0	0	0	0	0	0	0	0	0	0	0	

Liquor Law Violations														
Arrest	3	0	0	0	0	0	3	0	0	0	0	0	0	0
Referral	11	0	0	0	0	0	11	0	0	0	0	0	0	0
Drug Law Violations														
Arrest	3	1	0	0	0	0	4	0	0	0	0	0	0	0
Referral	3	0	0	0	0	0	3	0	0	0	0	0	0	0
Weapons Law Violations														
Arrest	0	0	0	0	0	0	0	0	0	0	0	0	0	0
Referral	0	0	0	0	0	0	0	0	0	0	0	0	0	0

Total Crimes								On Campus				
Reported For:		Public Property						2003 GRAND TOTAL	Residential Only			
Offense Type (includes attempts)	Reported to						Sub- Total		Reported to			SECTION TOTAL
	UMKC Police		Non- Police		Local Police				UMKC Police	Non- Police	Local Police	
	Volker	HSC	Volker	HSC	Volker	HSC						
Murder	0	0	0	0	0	1	1	1	0	0	0	0
Manslaughter	0	0	0	0	0	0	0	0	0	0	0	0
Forcible Sex Offenses	0	0	0	0	0	0	0	1	1	0	0	1
Non-Forcible Sex Offenses	0	0	0	0	0	0	0	0	0	0	0	0
Robbery	0	0	0	0	2	1	3	5	0	0	0	0
Aggravated Assault	0	0	0	0	0	1	1	3	1	0	1	2
Burglary	0	0	0	0	5	1	6	52	3	0	3	6
Motor Vehicle Theft	0	0	0	0	14	7	21	41	0	0	2	2
Arson	0	0	0	0	0	0	0	0	0	0	0	0
Hate Crimes (by prejudices)												
Race	0	0	0	0	0	0	0	0	0	0	0	0
Gender	0	0	0	0	0	0	0	0	0	0	0	0
Religion	0	0	0	0	0	0	0	0	0	0	0	0
Sex Orientation	0	0	0	0	0	0	0	0	0	0	0	0
Ethnicity	0	0	0	0	0	0	0	0	0	0	0	0
Disability	0	0	0	0	0	0	0	0	0	0	0	0
Liquor Law Violations												
Arrest	0	0	0	0	0	0	0	3	0	0	0	0
Referral	0	0	0	0	0	0	0	11	11	0	0	11
Drug Law Violations												
Arrest	0	0	0	0	0	0	0	4	2	0	0	2
Referral	0	0	0	0	0	0	0	3	3	0	0	3
Weapons Law Violations												
Arrest	0	0	0	0	0	0	0	0	0	0	0	0
Referral	0	0	0	0	0	0	0	0	0	0	0	0

2002 Crime Statistics

Total Crimes								Non-Campus							
Reported For:								Building or Property							
Offense Type (includes attempts)	UMKC Campus						Sub- Total	Reported to						Sub- Total	
	UMKC Police		Non-Police		Local Police			UMKC Police		Non-Police		Local Police			
	Volker	HSC	Volker	HSC	Volker	HSC		Volker	HSC	Volker	HSC	Volker	HSC		
Murder	0	0	0	0	0	0	0	0	0	0	0	0	0	0	
Manslaughter	0	0	0	0	0	0	0	0	0	0	0	0	0	0	
Forcible Sex Offenses	2	0	0	0	0	0	2	0	0	0	0	0	0	0	
Non-Forcible Sex Offenses	0	0	0	0	0	0	0	0	0	0	0	0	0	0	
Robbery	0	0	0	0	0	0	0	0	0	0	0	0	0	0	
Aggravated Assault	2	0	0	0	0	0	2	0	0	0	0	0	0	0	
Burglary	87	13	0	0	0	0	100	0	0	0	0	2	0	2	
Motor Vehicle Theft	10	1	0	0	0	0	11	0	0	0	0	0	0	0	
Arson	1	0	0	0	0	0	1	0	0	0	0	0	0	0	
Hate Crimes (by prejudices)															
Race	0	0	0	0	0	0	0	0	0	0	0	0	0	0	
Gender	0	0	0	0	0	0	0	0	0	0	0	0	0	0	
Religion	0	0	0	0	0	0	0	0	0	0	0	0	0	0	
Sex Orientation	0	0	0	0	0	0	0	0	0	0	0	0	0	0	
Ethnicity	0	0	0	0	0	0	0	0	0	0	0	0	0	0	
Disability	0	0	0	0	0	0	0	0	0	0	0	0	0	0	

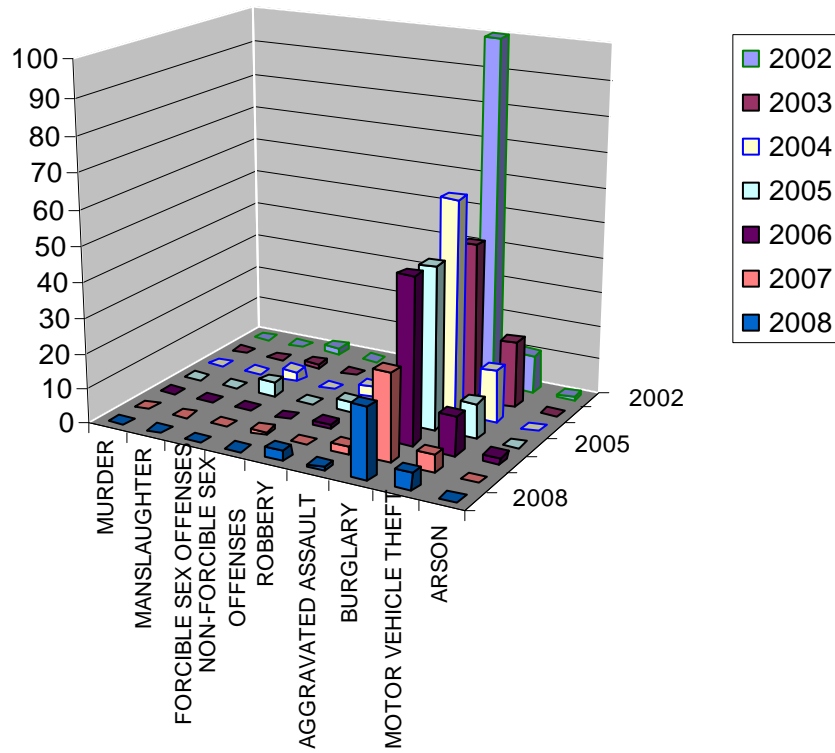
Liquor Law Violations														
Arrest	1	0	0	0	0	0	1	0	0	0	0	0	0	0
Referral	16	0	0	0	0	0	16	0	0	0	0	0	0	0
Drug Law Violations														
Arrest	2	0	0	0	0	0	2	0	0	0	0	0	0	0
Referral	1	0	0	0	0	0	1	0	0	0	0	0	0	0
Weapons Law Violations														
Arrest	0	0	0	0	0	0	0	0	0	0	0	0	0	0
Referral	0	0	0	0	0	0	0	0	0	0	0	0	0	0

Total Crimes								On Campus				
Reported For:		Public Property					Sub- Total	2002 GRAND TOTAL	Residential Only			SECTION TOTAL
Offense Type (includes attempts)	Reported to								Reported to			
	UMKC Police		Non- Police		Local Police				UMKC Police	Non- Police	Local Police	
	Volker	HSC	Volker	HSC	Volker	HSC						
Murder	0	0	0	0	0	0	0	0	0	0	0	0
Manslaughter	0	0	0	0	0	0	0	0	0	0	0	0
Forcible Sex Offenses	0	0	0	0	0	0	0	2	0	0	0	0
Non-Forcible Sex Offenses	0	0	0	0	0	0	0	0	0	0	0	0
Robbery	0	0	0	0	1	4	5	5	0	0	0	0
Aggravated Assault	0	0	0	0	0	0	0	2	0	0	0	0
Burglary	0	0	0	0	0	0	0	102	7	0	2	9
Motor Vehicle Theft	0	0	0	0	16	15	31	42	1	0	7	8
Arson	0	0	0	0	0	0	0	1	0	0	0	0
Hate Crimes (by prejudices)												
Race	0	0	0	0	0	0	0	0	0	0	0	0
Gender	0	0	0	0	0	0	0	0	0	0	0	0
Religion	0	0	0	0	0	0	0	0	0	0	0	0
Sex Orientation	0	0	0	0	0	0	0	0	0	0	0	0
Ethnicity	0	0	0	0	0	0	0	0	0	0	0	0
Disability	0	0	0	0	0	0	0	0	0	0	0	0
Liquor Law Violations												
Arrest	0	0	0	0	0	0	0	1	0	0	0	0
Referral	0	0	0	0	0	0	0	16	0	0	0	0
Drug Law Violations												
Arrest	6	2	0	0	0	0	8	10	0	0	0	0
Referral	0	0	0	0	0	0	0	1	0	0	0	0
Weapons Law Violations												
Arrest	0	0	0	0	0	0	0	0	0	0	0	0
Referral	0	0	0	0	0	0	0	0	0	0	0	0

CRIME ON CAMPUS COMPARISON

	2002	2003	2004	2005	2006	2007	2008
MURDER	0	0	0	0	0	0	0
MANSLAUGHTER	0	0	0	0	0	0	0
FORCIBLE SEX OFFENSES	2	1	3	4	0	0	0
NON-FORCIBLE SEX OFFENSES	0	0	0	0	0	1	0
ROBBERY	0	1	3	3	1	0	3
AGGRAVATED ASSAULT	2	2	2	0	1	2	1
BURGLARY	100	45	61	46	47	25	20
MOTOR VEHICLE THEFT	11	19	15	10	11	5	5
ARSON	1	0	0	0	2	0	0

CLERY CRIME COMPARISON



Crime Definitions

Criminal Homicide-Murder and Non-negligent Manslaughter – The willful (non-negligent) killing of one human being by another.

Criminal Homicide-Manslaughter by Negligence – The killing of another person through gross negligence.

Sex Offenses-Forcible-Any sexual act directed against another person, forcibly and/or against that person's will; or not forcibly or against the person's will where the victim is incapable of giving consent.

Forcible sex offenses include:

A. Forcible Rape - The carnal knowledge of a person, forcibly and/or against that person's will; or not forcibly or against the person's will where the victim is incapable of giving consent because of his/her temporary or permanent mental or physical incapacity (or because of his/her youth).

B. Forcible Sodomy - Oral or anal sexual intercourse with another person, forcibly and/or against that person's will; or not forcibly against the person's will where the victim is incapable of giving consent because of his/her youth or because of his/her temporary or permanent mental or physical incapacity.

C. Sexual Assault with an Object - The use of an object or instrument to unlawfully penetrate, however slightly, the genital or anal opening of the body of another person, forcibly and/or against that person's will; or not forcibly or against the person's will where the victim is incapable of giving consent because of his/her youth or because of his/her temporary or permanent mental or physical incapacity.

D. Forcible Fondling - The touching of the private body parts of another person for the purpose of sexual gratification, forcibly and/or against that person's will; or, not forcibly or against the person's will where the victim is incapable of giving consent because of his/her youth or because of his/her temporary or permanent mental incapacity.

Sex Offenses-Non-f forcible-Unlawful, non-f forcible intercourse.

Non-f forcible sex offenses include:

A. Incest - Non-f forcible sexual intercourse between persons who are related to each other within the degrees wherein marriage is prohibited by law.

B. Statutory Rape - Non-f forcible sexual intercourse with a person who is under the statutory age of consent.

Robbery - The taking, or attempted taking, of anything of value from the care, custody or control of a person or persons by force or threat of force or violence and/or by putting the victim in fear.

Aggravated Assault – An unlawful attack by one person upon another for the purpose of inflicting severe or aggravated bodily injury. This type of assault usually is accompanied by the use of a weapon or by means likely to produce death or great bodily harm. It is not necessary that the injury

result from an aggravated assault when a gun, knife or other weapon is used which could and probably would result in serious personal injury if the crime were successfully completed.

Burglary - The unlawful entry of a structure to commit a felony or theft. For reporting purposes this definition includes: unlawful entry with intent to commit a larceny or felony; breaking and entering with intent to commit a larceny; housebreaking; safecracking; and all attempts to commit any of the aforementioned.

Motor Vehicle Theft - The theft or attempted theft of a motor vehicle. (Includes all cases where automobiles are taken by persons not having lawful access even though the vehicles are later abandoned, including joyriding.)

Arson - Any willful or malicious burning or attempt to burn, with or without intent to defraud, a dwelling, house, public building, motor vehicle or aircraft, personal property of another, etc.

Liquor Law Violations - Violations of laws or ordinances prohibiting: the manufacture, sale, purchase, transporting, furnishing, possessing of intoxicating liquor; maintaining unlawful drinking places; bootlegging; operating a still; furnishing liquor to a minor or intemperate person; using a vehicle for illegal transportation of liquor; drinking on a train or public conveyance; and all attempts to commit any of the aforementioned. (Drunkenness and driving under the influence are not included in this definition.)

Drug Abuse Violations - Violations of State and local laws relating to the unlawful possession, sale, use, growing, manufacturing, and making of narcotic drugs. The relevant substances include: opium or cocaine and their derivatives (morphine, heroin, codeine); marijuana; synthetic narcotics (Demerol, methadone); and dangerous non-narcotic drugs (barbiturates, Benzedrine).

Weapons Possessions - The violation of laws or ordinances dealing with weapon offenses, regulatory in nature, such as: manufacture, sale, or possession of deadly weapons; carrying deadly weapons, concealed or openly; furnishing deadly weapons to minors; aliens possessing deadly weapons; and all attempts to commit any of the aforementioned explosives.

Geography definitions from the Clery Act

On Campus

Any building or property owned or controlled by an institution within the same reasonably contiguous geographic area and used by the institution in direct support of, or in a manner related to, the institution's educational purposes, including residence halls; and Any building or property that is within or reasonably contiguous to paragraph (1) of this definition, that is owned by the institution but controlled by another person, is frequently used by students, and supports institutional purposes (such as a food or other retail vendor).

A Non-Campus Building or Property

Any building or property owned or controlled by a student organization that is officially recognized by the institution; or Any building or property owned or controlled by an institution that is used in direct support of, or in relation to, the institution's educational purposes, is frequently used by students, and is not within the same reasonably contiguous geographic area of the institution.

On Public Property

All public property, including thoroughfares, streets, sidewalks, and parking facilities, that is within the campus, or immediately adjacent to and accessible from the campus.