



Campus Crime and Fire Safety Report

OCTOBER 2011

In accordance with the Jeanne Clery Disclosure of Campus Security Policy and Campus Crime Statistics Act of 1998 and the Higher Education Opportunities Act of 2008



UMKC Police Department

4825 Troost, Room 214B
Kansas City, MO 64110
(816) 235-1515

go.umkc.edu/police

"To Serve and Protect with Integrity, Courage and Respect."



UMKC Environmental Health and Safety

Fire Safety Division

4747 Troost, Room 22B
Kansas City, MO 64110
(816) 235-6095

<http://www.umkc.edu/adminservices/ehs/fire-safety.asp>

www.umkc.edu/safetyreport

MESSAGE FROM THE CHIEF OF POLICE

Welcome to the University of Missouri-Kansas City:

The University of Missouri-Kansas City is committed to providing the members of the campus community and visitors with the safest and most secure environment possible. At this time, I would like to request your assistance in making the campus a safer and more secure learning environment by contacting the UMKC Police Department if you witness a crime or suspicious activity on campus.

Each year, in compliance with the Jeanne Clery Disclosure of Campus Security Policy and Campus Crime Statistics Act, the UMKC Police Department makes available the Annual Campus Safety and Crime Report. This report is published to inform the faculty, staff, students, and citizens of our crime statistics, policies, procedures, and general safety on the University of Missouri-Kansas City campus.

Additional copies of this report may be obtained by contacting our office at (816) 235-1515, by stopping by our Communications Office in the Police Department at 4825 Troost, room 214B, or you may access this report at: www.umkc.edu/safetyreport

All of the police officers employed by UMKC are certified State Peace Officers and have the jurisdictional responsibilities for all crimes and incidents that occur on our campus. Our department recently completed the lengthy process to become nationally accredited by the Commission on Accreditation for Law Enforcement Agencies, Inc.

As the Chief of Police for the University of Missouri-Kansas City, I look forward to working with our community to address the challenges associated with the academic community. I can assure you that all members of UMKC Police Department are committed to being partners with our community and providing excellent service.

Sincerely,

Michael Bongartz

Michael Bongartz
Chief of Police

About this Report

In 1990, the federal “Crime Awareness and Campus Security Act” was enacted requiring universities and colleges to:

- Publish and distribute an annual campus security report that contains the most recent calendar year and the two preceding calendar years of campus crime statistics, policy statements and program descriptions, and procedures to be followed in sex offenses.
- Inform prospective students and employees about the report.
- Provide timely notice to the campus on crimes that are considered threats to safety.

The Jeanne Clery Disclosure of Campus Security Policy and Campus Crime Statistics Act required all postsecondary institutions participating in Title IV student financial aid programs to disclose campus crime statistics and security information. The act was amended in 1992, 1998, 2000, and 2008. The 1998 amendments renamed the law the *Jeanne Clery Disclosure of Campus Security Policy and Campus Crime Statistics Act* in memory of a student who was slain in her dorm room in 1986.

This report describes security practices and procedures at the University of Missouri-Kansas City and lists crime statistics for the most recent calendar year and the required two preceding calendar years. Each year the University disseminates information on the status of campus security to all current students and employees. Upon request, the report will be provided to persons who request a copy. This report can also be accessed by going to the UMKC Police webpage (<http://www.umkc.edu/adminservices/police/safety/campus-safety-report.asp>) and following the “2011 Crime Report” link.

The Clery Act requires higher education institutions to give timely warnings of crimes that represent a threat to the safety of students or employees, and to make public their campus security policies. It also requires that crime data are collected reported and disseminated to the campus community and are also submitted to the Department of Education. The act is intended to provide students and their families, as higher education consumers, with accurate, complete and timely information about safety on campus so that they can make informed decisions.

The 2011 edition of the Campus Safety and Crime Report lists yearly statistics for the crimes of murder, sexual offenses, robbery, aggravated assault, burglary, arson, motor vehicle thefts, and “hate crime” offenses, as well as statistics for arrests and disciplinary referrals for alcohol, drug, and weapon violations. These crimes are defined in this report.

The administrative division of the UMKC Police Department has prepared this report using internal crime reports and other statistical data and information. In addition, data and information is supplied by the UMKC Division of Student Affairs, Deans, Directors, Department Heads and the Kansas City, Missouri Police Department. Please take some time to review the information contained in the report and if you have questions please do not hesitate to contact the UMKC Police at 816-235-1515.

Table of Contents

MESSAGE FROM THE CHIEF OF POLICE	2
THE UNIVERSITY OF MISSOURI-KANSAS CITY	6
UMKC POLICE DEPARTMENT	7
Mission and Purpose	7
Values and Guiding Principles	7
University Police: Your Community Policing Agency	8
Relationships with Other Law Enforcement Agencies	9
SAFETY ON CAMPUS.....	9
Policy for Reporting the Annual Disclosure of Crime Statistics	9
Timely Warning Policy	10
Mass Notification	11
Mass Notification Annual Testing	12
Daily Crime Log	12
Policy on Crime and Incident Reporting	12
Confidential Reporting Procedures	14
Crime Prevention	14
<i>Your Role in Preventing Crime</i>	14
<i>Prevention Tips</i>	14
<i>Crime Prevention Presentations and Training</i>	15
Sexual Assault Policy Statement	16
<i>Registered Sex Offender Information</i>	17
<i>Sexual Harassment Policy</i>	17
Alcohol and Drugs	18
<i>Alcohol Policy</i>	18
<i>Drug Policy</i>	19
<i>Alcohol or Substance Abuse Assistance</i>	19
Missing Students in On-campus Housing	20
Campus Facilities Access	21
Maintenance of Campus Facilities	22

UMKC Campus and Emergency Telephone Locations	23
Important UMKC Phone Numbers	25
Victim's Rights	25
UMKC Alert – Emergency Notification	25
Annual Crime Statistics	26
<i>2010 Crime Statistics</i>	27
<i>2009 Crime Statistics</i>	Error! Bookmark not defined.
<i>2008 Crime Statistics</i>	Error! Bookmark not defined.
CRIME ON CAMPUS COMPARISON	33
Crime Definitions	34
Clery Act Hate Crime Definitions	35
Geography Definitions from the Clery Act	37
CAMPUS FIRE SAFETY	38
Student Housing Description	38
Student Housing Policies	38
Evacuation Procedures	38
Fire Logs	39
Regular Mandatory Fire Drills	39
Training	39
Plans for Future Improvements	39
FIRE STATISTICS.....	40
Fire Statistics	Error! Bookmark not defined.
Fire Reporting Definitions	41

The University of Missouri-Kansas City

The University of Missouri-Kansas City was spawned by a city built at the origin of the Oregon and Santa Fe trails. These roadways to the west began at Old Westport, just a few miles from the present UMKC campus.

In the 1890s, there was talk of founding a university in Kansas City because of the city's growth, but it was not until the 1920s that talk turned to action. In the postwar decade, the chamber of commerce appointed a committee to consider the possibility of a university in Kansas City. A board of trustees comprised of leading businessmen was established and the board proceeded cautiously with its plans.

In 1929, a charter for the University of Kansas City was granted. The dream became a reality when William Volker, a local philanthropist for whom the 93-acre Volker campus is named, presented the board with the 40-acre nucleus of the present campus site in Kansas City's Rockhill district. Volker also provided funds to purchase the former private home of Walter S. Dickey, a wealthy Kansas City manufacturer. The ivy-covered stone mansion, now known as Scofield Hall and situated in the center of the campus, was the fledgling university's first main building.

With a charter and a campus site, the Board of Trustees started a citywide drive for funds. In 1933, the University of Kansas City announced that classes would begin in October. A faculty of 17 was hired, and on Oct. 2, 1933, 264 students were enrolled. The University of Kansas City, a private, independent university, had begun.

On July 25, 1963, the University of Kansas City became a part of the University of Missouri System, joining three other campuses located in Columbia, Rolla and St. Louis. At that time, the Board of Trustees of the University of Kansas City transferred assets estimated at \$20 million to the Board of Curators of the University of Missouri.

The University's name was changed to University of Missouri-Kansas City and since 1963 the Kansas City campus has experienced steady growth while expanding on urban connections. The total number of students taking classes at UMKC is now more than 14,200 students.

In addition to the Volker campus, UMKC operates the Hospital Hill campus, located in midtown Kansas City, Mo. This campus is adjacent to Truman Medical Center, UMKC's primary public teaching hospital, and is home to the UMKC School of Medicine, School of Dentistry, School of Nursing and the School of Pharmacy.

UMKC Police Department

Mission and Purpose

The fundamental mission of the University Police force is to provide the leadership and professional support required to sustain and improve the University System's efforts to develop a balanced police-University community effort against any lawlessness or disorderly conduct which could interfere with the general missions of the University System. As such, the UMKC Police Department is an essential university partner promoting a safe and orderly learning environment and enhanced quality of life with a reduction of crime, social disorder and fear of crime.

Values and Guiding Principles

We are committed to the pursuit of excellence in our delivery of police services.

We recognize our interdependent relationship with the community we serve and will remain sensitive to the community's priorities and needs.

We collaborate in the development of innovative and responsive problem solving.

We are enriched by the diversity of our community and respect and protect the rights and dignity of all persons.

We conduct all citizen contacts with courtesy and compassion, as we are dedicated to providing the highest level of service with integrity, fairness and professionalism.

We serve with courage and pride in maintaining the public trust by upholding the highest ethical standards.

To promote organizational growth we are committed to assisting in the development of the employee's professional and personal knowledge, skills and abilities, in an atmosphere where the work is fun, challenging and satisfying.

University Police: Your Community Policing Agency

Safety and security is coordinated by the University Police, located in 4825 Troost Building, room 214B. Missouri Revised Statutes recognize UMKC officers as police officers in the State of Missouri, providing the officers with full law enforcement authority within the State of Missouri. UMKC police officers are commissioned under the authority of the University of Missouri Board of Curators and Missouri Peace Officer Standards and Training (POST).

UMKC officers have the same power and authority as any other police officer in the State. Officers are required to maintain the same skills, training, and qualifications regardless of jurisdiction. In many cases, our officers receive extensive specialized training to better serve the University community.

UMKC employs 28 police officers, nine security guards, and six communications operators. All police officers are graduates of the Kansas City Police Academy or the Western Missouri Police Academy where they receive more than 1,000 hours of law enforcement training. The academy training consists of approximately seven months of instruction covering Constitutional Law, Missouri Statutory Law, Traffic Law, Criminal Investigation, First Aid, Human Behavior, Juvenile Justice and Procedures, Patrol, Report Writing, Traffic Investigation, Defensive Tactics, Driver Training, Firearms, and Physical Training. Successful completion of the academy is a prerequisite for continued employment. All officers are then licensed through the Missouri Department of Public Safety with a Class A license and have the full authority of any police officer. After completion of the police academy, new officers are further developed in an on-the-job 10-week field-training program with a field-training officer as their coach/mentor. Throughout the year, in-service training and other appropriate training using outside agencies and organizations are conducted.

The UMKC Police Department has primary law enforcement jurisdiction on the campus and associated University properties. As with any other law enforcement agency, it is the duty of the University Police officer to keep the peace and maintain order. We strive to maintain an environment that is conducive to the pursuit of academic endeavors.

We are organized as any other police agency, and are comprised of a uniformed patrol division, detective division, crime prevention unit, administrative section and a civilian support staff consisting of communications officers (commonly referred to as radio dispatchers), clerical staff and security guards.

University police officers conduct foot, vehicular and bicycle patrols on campus and in the residence community 24-hours a day, throughout the year. Officers are responsible for reporting and investigating crimes and traffic accidents, responding to medical emergencies, enforcement of state laws and local ordinances, and all other incidents requiring police assistance. Criminal cases are forwarded to the Kansas City Prosecuting Attorney's Office or the Jackson County Prosecuting Attorney's Office for prosecution. The department enforces the University parking rules and regulations as well as city traffic regulations on adjacent and through streets.

We are your "hometown police department" with authority and responsibilities as any other law enforcement agency.

Relationships with Other Law Enforcement Agencies

The University of Missouri-Kansas City Police Department maintains a close working relationship with the Kansas City, Missouri Police Department, Jackson County Sheriff's Department, Jackson County Prosecuting Attorney Office, and all metropolitan and Missouri law enforcement agencies. Our cooperative mutual aid agreement provided by a written memorandum of understanding with the Kansas City Police Department enables us to work together on a daily basis and in unusual situations while fostering an air of cooperation.

UMKC-PD has direct computer access to the Missouri Uniform Law Enforcement System (MULES) and KC Regional Justice Information Service (REJIS), as well as the National Crime Information Center (NCIC) in Washington, D.C. Computerized police records allow UMKCPD to share information with other law enforcement agencies.

UMKCPD maintains membership in several metropolitan area law enforcement information-sharing groups including Metro Intel, Metro-list, Mid-America Regional Crime Analysis Network, and Kansas City Terrorist Early Warning Group. During multi-agency emergency operations, a metro-area radio frequency has been established to permit law enforcement and emergency services to effectively communicate and coordinate emergency operations.

Due to the complexity of many investigations, it is important for UMKCPD to work closely with all law enforcement and criminal justice agencies. We are pleased that our working relationships at the federal, state, and local levels continue to serve the university community.

Safety on Campus

Policy for Reporting the Annual Disclosure of Crime Statistics

Campus crime, arrest and referral statistics include those reported to the UMKC Police, designated campus officials (including but not limited to directors, deans, department heads, advisors to students/student organizations, athletic department), and local law enforcement agencies. Each entity provides updated information on their educational efforts and programs to comply with the Act. Missouri law requires prompt, mandatory reporting to the local law enforcement agency by health care practitioners (such as those at the student counseling and health center) when they provide medical services to a person they know or reasonably suspect is suffering from wounds inflicted by a firearm or is a result of assault or abusive conduct. Department of Counseling, Health and Testing staff inform their clients of the

procedures to report crime to the University Police on a voluntary basis should they feel it is in the best interest of the client.

Each year, all students, faculty and staff are notified electronically about publication of this report; that is, by mass e-mail, posting on UMKC home website, U Matters (faculty/staff eNewsletter) and USucceed(student eNewsletter) all of which provide the website to access this report. Copies of the report may also be obtained at the University Police Department located at 4825 Troost, room 214B, or by calling (816) 235-1515. All prospective employees may obtain a copy in this manner and information about the availability of this report is included in the UMKC employment application.

Timely Warning Policy

In addition to the yearly statistics provided in this booklet and on our website, our department will make periodic reports, or Crime Alerts, to the campus community of recent crimes that may affect the quality of life in the campus area. These reports may include crime prevention recommendations and are intended to raise awareness regarding criminal activity so that the community can increase or implement personal safety strategies.

Crime Alerts may be disseminated via campus e-mail, voice mail, posted in selected offices on campus, including student public areas, residence halls, and campus building liaisons, U-News student newspaper, and the UMKC Police website at www.umkc.edu/police

The UMKC Police Department Chief or a designee will develop timely warning notices for the University Community to notify members of the community about serious crimes against people that occur on or near campus, where it is determined that the incident may pose an ongoing threat to members of the UMKC community. These warnings will be distributed if the incident is reported to UMKCPD, or reported to a campus security authority or KCPD if they notify us about a serious crime that occurred on campus.

The department issues/posts Crime Alerts for incidents of

- Murder
- Aggravated assault (cases involving assaults among known parties, such as two roommates fighting which results in an aggravated injury, will be evaluated on a case by case basis to determine if the individual is believed to be an on-going threat to the larger UMKC community)
- Robbery involving force or violence (cases including pick pocketing and purse snatching will typically not result in the issuance of a Crime Alert, but will be assessed on a case by case basis)
- Sexual Assault (considered on a case by case basis depending on the facts of the case, when the incident occurred versus when it was reported and the amount of information known by the UMKC Police Department)
- Major incidents of arson
- Other crimes as determined necessary by the Chief of Police, or the Patrol Commander in his absence.

UMKCPD will generate an email which will be approved and forwarded by University Public Relations to the University Community as a mass email. Updates to the UMKC community about any particular

case resulting in a crime alert may be distributed via mass email or may be shared with *The U-News* for a follow-up story.

Crime alerts may also be posted in campus buildings, when deemed necessary. When a crime alert is posted in campus buildings, they are printed on orange paper and are posted in the lobby/entrance area of the affected building(s) for seven (7) days. A list of the buildings where the alerts may be posted is maintained by the Chief and Patrol Commander.

The Chief will send a copy of the Crime Alert to the Chief of Staff for the President for review and possible distribution to the members of the Board of Curators, as deemed necessary and appropriate.

Crime Alerts are filed in the case jacket with the corresponding case report. The department does not issue crime alerts for the above listed crimes if:

1. The department apprehends the subject(s) and the threat of imminent danger for members of the UMKC community has been mitigated by the apprehension.
2. If a report was not filed with UMKCPD or if UMKCPD was not notified by campus officials in a manner that would allow the department to post a "timely" warning for the community. A general guideline will include a report that is filed more than five days after the date of the alleged incident may not allow UMKCPD to post a "timely" warning to the community. This type of situation will be evaluated on a case by case basis.

The department also maintains a daily crime log which is normally updated each business day and contains all crimes reported to UMKCPD. This "blotter" is provided to *The U-News* on a weekly basis to provide information to the newspaper about various crimes that occur on campus. This method is used as a secondary means of distributing information to the UMKC community about crimes and crime trends on campus.

Mass Notification

Upon occurrence of an emergency, the Communications and Warning Committee will provide immediate notice to appropriate segments of the campus community upon confirmation of a significant emergency, unless such notice would compromise efforts to contain the emergency. The UMKC Chief of Police, UMKCPD Administrative Sergeant and Vice Chancellor for Marketing and Communications are designated as the Communications and Warning Committee in the event of an emergency. This committee is responsible for disseminating emergency information to the campus community. Notifications may occur through use of the University's mass notification service, through the local media, or through other communication channels as appropriate for the emergency. The University's mass notification service allows for notification through multiple means, including home phone, work phone, cell phone, UMKC email address, text messaging, numeric pager, and alphanumeric pager.

Mass Notification Annual Testing

As part of UMKC's ongoing emergency preparedness program, UMKC conducted several tests of UMKC Alert! Emergency Mass Notification System. The tests focused on the text messaging, voice messaging and e-mail capabilities of the system. These were unannounced tests and only certain groups of the system were tested. If you require further information on the testing of the emergency notification system please contact UMKC Director of Public Relations at (816) 235-1576. More information about the UMKC Alert Emergency Notification System, as well as registration instructions, can be found at <http://www.umkc.edu/umkcalert/>.

Daily Crime Log

The University of Missouri-Kansas City Police Department maintains a written, easily understood Daily Crime Log that records, by the date the crime was reported, any crime that occurred on campus, on a non-campus building or property, on public property, or within the established jurisdiction of the campus and was reported to the department where an official police report was taken. This log includes: the nature, date, time, and general location of each crime, and the disposition of the complaint, if known. This log will not include reports made to other agencies. It shall be the duty of the University of Missouri-Kansas City Police Administrative Services personnel to prepare this report in a timely manner so the community and media have access to the information. This log is normally available in the lobby of the UMKCPD Communications office.

Policy on Crime and Incident Reporting

The University of Missouri-Kansas City Police Department is the primary agency for reporting and investigating all crimes that occur on University property regardless of how seemingly insignificant the incident. It is the policy of the UMKC Police Department to encourage prompt reporting of crimes, potential criminal actions and any emergency on campus, including medical and fire emergencies, directly to the UMKC Police. This includes prompt reporting of all incidents that could result in injury to or death of persons, damage to, destruction, theft or disappearance of University property (including money and securities) or property of others. These incidents are reported in order that causes may be determined and corrective measures taken to improve safety and preserve University assets.

To report a crime or emergency on campus, call **UMKC-PD by dialing 9-1-1** from any telephone on campus. Also, emergency phones are distinctively marked and have a blue light on top, and are located throughout campus. Campus elevators are also equipped with emergency phones. Upon receipt of the

call, a University police officer will be immediately dispatched to the site to meet with the victim or witness to gather information and prepare an official report and have the authority to make arrests if needed.

Crime and incident reports may be made 24 hours a day by calling **9-1-1 for emergencies**, or **(816) 235-1515 for non-emergencies**, or coming to UMKCPD. Priority is given to reports of incidents that threaten life or safety of people, the security of the property and the peace of the community.

UMKCPD is located on the corner of Troost and Volker, room 214B of the 4825 Troost Building and is accessible 24 hours a day.

Each day incidents from the previous day are made available on an incident log located in the Communications Office of the Police Department at 4825 Troost, room 214B. The incident log is distributed to key staff, other law enforcement agencies, and, if necessary, to the prosecuting attorney.

Confidential Reporting Procedures

If you are the victim of a crime and do not want to pursue action within the University system or the criminal justice system, you may still want to consider making a confidential report. With your permission, the UMKC Police Department can file a report on the details of the incident without revealing your identity. The purpose of a confidential report is to comply with your wish to keep the matter confidential, while taking steps to ensure the future safety of yourself and others. With such information, the University can keep an accurate record of the number of incidents involving students, employees and visitors; determine where there is a pattern of crime with regard to a particular location, method, or assailant; and alert the campus community to potential danger. Reports filed in this manner are counted and disclosed in the annual crime statistics for the institution.

Campus “professional counselors”, when acting as such, are not considered to be a campus security authority and are not required to report crimes for inclusion into the annual disclosure of crime statistics. As a matter of policy, they are encouraged, if and when they deem it appropriate, to inform persons being counseled of the procedures to report crimes on a voluntary basis for inclusion into the annual crime statistics.

Crime Prevention

The University Police Department makes every effort to be proactive to reduce and prevent crime. Some efforts are:

- Emergency Telephones Located in the Parking Lots
- 24-Hour Preventative Patrol
- Intrusion Alarms in Key Areas
- Property Engraving Program
- Crime Prevention Seminars
- Crime Prevention Materials
- Bicycle Registration

Your Role in Preventing Crime

A high percentage of campus crimes are incidents of opportunity. Often, faculty, staff and students unknowingly contribute to crimes of opportunity by placing themselves or their property at risk. Prevention efforts can be effective in reducing the opportunities for criminal activity. You play a key role in crime prevention efforts. Be cautious and alert to your own safety and protective of your possessions and University property.

In addition to preventing crime, considerable effort is devoted to crime intervention.

Prevention Tips

- Do not hesitate to call police when confronted.

- Keep your residence room locked.
- At night, walk in groups of at least two and stay on main walkways.
- Familiarize yourself with the location of emergency phones.
- When parking, remove valuables from view and lock your vehicle.
- Engrave your valuables with your driver's license number and record serial numbers.
- Make copies of credit cards and other valuables in your wallet.
- Report all losses to University Police immediately.
- Stay in control. Do not allow the abuse of alcohol or other substances to put you at risk.
- Do not leave personal property unattended.
- Be aware of your surroundings and what is going on around you.
- Do not hesitate to report suspicious individuals or activity to the University Police.

Crime Prevention Presentations and Training

In 2010, some of the crime prevention programs and workshops presented by the University Police included:

- New student orientations
- Parent orientation programs
- Transfer student orientations
- New faculty orientation
- Special workshops on personal safety for UMKC's Human Resources Office
- Fraternity and sorority programs
- Men and women residence hall members (given every year in the first two weeks of school)
- Alcohol abuse programs
- Student Activities' fairs
- Residence Hall Resident Assistant's Workshop
- RAD System, Rape Aggression and Defense Workshops

The UMKC Police presented more than 24 crime prevention and personal safety workshops and seminars, and will conduct presentations at any time upon request or on a regularly scheduled basis. To register for a program or to schedule one for your area, please contact Crime Prevention at (816) 235-1716.

Please remember security is everyone's business.

Sexual Assault Policy Statement

UMKC does not have a rape and sexual assault policy but recognizes that sexual assault is a serious issue, and will not tolerate acts of sexual assault on campus. The University will investigate all allegations of sexual assault and take appropriate disciplinary, criminal, or legal action, with prior consent of the victim.

As soon as convenient, the victim of a sexual assault should report the incident to the **University Police, 9-1-1, or (816) 235-1515**. If the sexual assault occurred off campus, the victim may still call UMKC Police. If the victim chooses, UMKC Police will notify the appropriate agency to handle the investigation. The victim should make every attempt to preserve any physical evidence of the assault. This may include a voluntary medical exam, not showering, or not disposing of any damaged clothing, or other items that are present after/during the assault. Victims are encouraged to call any law enforcement agency by dialing 9-1-1 after a sexual assault for crime investigation, referral or transport for medical treatment, and referral to crisis counseling and legal advocacy.

The University Police, with the victim's consent, will immediately conduct a criminal investigation of a reported sexual assault. They will also contact a crisis-counselor, if the victim wishes. Disciplinary actions may be imposed on recognized individual students, student organizations, and/or university faculty and staff found responsible for a sexual assault. University sanctions following campus disciplinary procedures depend on the outcome and may range from suspension to expulsion. Every effort will be made to criminally prosecute perpetrators of sexual assaults. The accuser and the accused are entitled to the same opportunities to have others present during a campus disciplinary proceeding and both shall be informed of the outcome of the proceeding.

After an alleged sexual assault incident occurs, the University will assist the victim in changing academic and living situations if so requested and if such changes are reasonably available. Individuals, groups and organizations wanting information or programs that address sexual assaults and how to prevent such incidents should contact the UMKC Police.

If you become the victim of a sexual assault on or off campus:

- GET to a safe place
- CONTACT the University Police (or your local police if off campus) by dialing 9-1-1
- DO NOT shower, bathe, douche, change or destroy clothing
- DO NOT straighten up the area where the assault took place
- SEEK medical attention; locally, St. Luke's Hospital, 4401 Wornall Road, (816) 932-2000.
- SEEK support and assistance:
 - UMKC Counseling Center, www.umkc.edu/chtc/, (816) 235-1635
 - Women's Center, www.umkc.edu/womenc/, (816) 235-1638
 - Metropolitan Organization to Counter Sexual Assault (MOCSA) www.mocsa.org

- Office: (816) 931-4527
- 24-Hour Crisis Line, (816) 531-0233
- UMKC Student Health & Wellness can provide emergency contraception and check for and treat STD's, www.umkc.edu/chtc/health, (816) 235-6133

[Registered Sex Offender Information](#)

The Missouri Sex Offender Registry can be accessed through the Missouri State Highway Patrol's website. Registered sex offenders throughout the state are posted along with their name, address, date of birth and a photo to identify the offender. Information about the offense is also available.

www.MSHP.DPS.MISSOURI.GOV

Please feel free to call the hotline number if you have questions about the offenders in your area.

1-888-767-6747

Telephone numbers for information on registered sex offenders by county are:

- Jackson County sexual offender data is (816) 524-4302.
- Platte County sexual offender data is (816) 858-2424.
- Cass County sexual offender data is (816) 380-5200.
- Clay County sexual offender data is (816) 792-7614.

To search for offenders anywhere in the United States, try searching the National Sex Offender Registry at: www.nsopr.gov

[Sexual Harassment Policy](#)

The University of Missouri uses information, education and guidance to increase awareness of the problem of sexual harassment.

It is the policy of the University of Missouri, in accord with providing a positive, discrimination-free environment, that sexual harassment in the work place or the educational environment is unacceptable conduct. Sexual harassment is subject to discipline, up to and including separation from the institution.

Sexual harassment is defined for this policy as either:

- Unwelcome sexual advances or requests for sexual activity by a University employee in a position of power or authority to a University employee or a member of the student body.
- Other unwelcome verbal or physical conduct of a sexual nature by a University employee or a member of the student body to a University employee or a member of the student body. This happens when:
 - Submission to or rejection of such conduct is used explicitly or implicitly as a condition for academic or employment decisions.
 - The purpose or effect of such conduct is to interfere unreasonably with the work or academic performance of the person being harassed.

- The purpose or effect of such conduct to a reasonable person is to create an intimidating, hostile or offensive environment.

This policy also prohibits retaliation against any person who brings an accusation of discrimination or sexual harassment or who assists with the investigation or resolution of sexual harassment. Notwithstanding this provision, the University may discipline an employee or student who has been determined to have brought an accusation of sexual harassment in bad faith.

Members of the University community who believe they have been sexually harassed may seek redress, using the following options:

- Pursue appropriate informal resolution procedures as defined by the individual campuses. These procedures are available from the campus affirmative action/equal opportunity officer.
- Initiate a complaint or grievance within the time prescribed by the applicable grievance procedure. Faculty are referred to Section 370.010, “Academic Grievance Procedures;” staff to Section 380.010, “Grievance Procedure for Administrative, Service and Support Staff;” and students to Section 390.010, “Discrimination Grievance Procedure for Students.” Pursuing a complaint or informal resolution procedure does not compromise one’s right to initiate a grievance or seek redress under state or federal law.

Upon receiving an accusation of sexual harassment against a member of the faculty, staff or student body, the University will investigate, and if substantiated, will initiate the appropriate disciplinary procedures. There is a five-year limitation period from the date of occurrence for filing a charge that may lead to discipline. An individual who makes an accusation of sexual harassment will be informed:

- At the close of the investigation, whether or not disciplinary procedures will be initiated.
- And at the end of any disciplinary procedures, of the discipline imposed, if any.

Alcohol and Drugs

University police officers enforce laws regulating the use of alcoholic beverages and underage drinking. UMKC is committed to maintaining a safe and healthy environment for the campus community. Alcohol and other drugs should not interfere with the University’s educational mission. All UMKC students, faculty members, staff members, and administrators are subject to local, state and federal laws regarding the unlawful possession, distribution, or use of alcohol or illegal drugs. Violations of University of Missouri regulations can result in disciplinary action up to and including expulsion for students and discharge for employees.

Alcohol Policy

The use or possession of any alcoholic beverage is strictly prohibited on all University property except where appropriate University approval is given, subject to legal requirements. Guidelines for alcohol use are available at the Student Involvement Office, located in Suite 320 of the Student Union. To request the use of alcoholic beverages, individuals should inquire at the Office of Student Auxiliary Services located in the University Center, phone (816) 235-1411.

It is the responsibility of each recognized student organization to see that those in attendance at their social functions and meetings conduct themselves in accordance with UMKC regulations, local ordinances, state and federal laws, and the organization's national affiliation regulations. Each recognized student organization shall be held responsible, as an organization, for any violation of UMKC regulations, local ordinances, state and federal laws, and the organization's national affiliation regulations committed on any premises under its control.

The University of Missouri-Kansas City observes and supports all applicable state and federal laws and local ordinances regulating the sale and possession of alcoholic beverages. Additional information about the UMKC alcohol policy is available in the student handbook, which is accessible on line at <http://www.umkc.edu/getinvolved/docs/student-handbook.pdf> .

Drug Policy

University of Missouri regulations prohibit the unlawful possession, use, distribution, manufacture, and sale of alcoholic beverages and illicit drugs without proper prescription or required license or as expressly permitted by law or University regulations, including operating a vehicle on University property, or on streets or roadways adjacent to and abutting a campus, under the influence of alcohol or a controlled substance as prohibited by law of the State of Missouri.

Additional information about the UMKC drug policy is available in the student handbook, which is accessible on line at <http://www.umkc.edu/getinvolved/docs/student-handbook.pdf> .

Alcohol or Substance Abuse Assistance

A variety of resources exist for drug and alcohol counseling, treatment and rehabilitation programs. For detailed information concerning these resources available from the University and community agencies, students can contact the University Counseling, Health and Testing Center at (816) 235-1635, and employees can contact the Department of Human Resources at (816) 235-1621. Such referrals will be confidential.

Missing Students in On-campus Housing

Purpose:

The purpose of this statement is to set forth University policy with regard to situations where the University becomes aware that a student living in on-campus housing is absent for more than a reasonable time.

Preamble:

The Higher Education Opportunity Act of 2008 requires that certain universities establish a missing student notification policy for students residing in on-campus housing.

Policy Statement:

1. All students living in on-campus housing must identify and provide emergency contact information to the Division of Student Affairs and Enrollment Management. Each student will be responsible for keeping the confidential contact information updated and current through their UMKC Pathway Account. The security of the contact information will be maintained by the Division.
2. If university officials reasonably determine or believe there is justification to investigate the welfare or missing status of a student living in on-campus housing, a report concerning their missing status will be filed with the University Police Department. A student living in on-campus housing will not be considered missing if they have provided information about their intended whereabouts. A student living in on-campus housing will not be considered missing if they are gone during recognized University holidays and/or breaks.
3. If the University Police Department's investigation determines that a student for whom a report has been filed has been missing for more than twenty-four (24) hours, the University Police Department will notify the Division of Student Affairs and Enrollment Management. The Vice Chancellor for Student Affairs and Enrollment Management will determine who to contact for the student.
4. If the missing student is under the age of eighteen (18), the University is required to contact the missing student's parent[s] or guardian[s]. If the missing student is eighteen (18) years of age or older, the University will contact the confidential contact person provided by the student pursuant to paragraph 1 above.

Campus Facilities Access

It is the policy of the University of Missouri-Kansas City that other than normal working hours, all buildings shall be locked to maintain the security of the buildings and their contents. Staff members and students may be issued keys or granted access to University buildings upon recommendation of the department chair or administrative head, in accordance with established procedures. Keys are issued for entry to University buildings for the purpose of conducting University business only. Access will be granted in those buildings or rooms that are equipped with the card access system.

All faculty, staff or students who are not issued a key or granted card access may gain access to a specific area of a specific building in accordance with the following procedure:

- Written and signed permission from the dean, director, or departmental head of the specified location. This written and signed authorization shall be filed with the University Police at least 24 hours in advance. Anyone not on the authorization list and in the specified location will be asked to leave.
- An authorized individual entering or leaving a locked building shall not permit any individual to enter who would not normally be permitted to enter the building during the hours it is locked. Authorized individuals may have guests with them as long as the guests stay in the proximity of faculty or staff members having the assigned key and the authorized individual assumes full responsibility for their presence.
- An individual entering or leaving a locked building shall be responsible for securing the door and may be held responsible for any damage to University property resulting from non-secured doors.
- The loss or theft of any key is to be reported immediately to the department chair or administrative head who in turn will notify Campus Facilities Management and Campus Police.
- All faculty, staff and students are to have their University identification with them while on campus. Also, they should produce the identification upon request from the University Police.
- Situations that individuals perceive as security hazards are requested to report these to the University Police or Campus Facilities Management.

Residence Hall students should never prop locked doors open or loan their residence hall keys or access cards to anyone. Students are to make themselves familiar with Residence Hall policies concerning visitors, after-hour admittance and general security policies. These policies and rules can be obtained from their resident assistant, resident manager or the Housing Office, or online at www.umkc.edu/housing/guide.asp. Other security tips to remember include:

- Ask strangers to wait in common areas while their friends are summoned.
- Lock your room door and windows when you leave, even if only for a minute, and take your keys with you.
- Keep small valuable items out of sight, in a closed drawer, or another safe place.
- Politely offer assistance to persons in your building or residence you do not recognize. If they have legitimate business, they will appreciate your help. If they do not, ask them to leave.
- Keep your room locked when you are out during move-in. Do not leave your car unlocked when loading or unloading.
- Do not leave coats, books, or other valuable items in common areas. Keep them in your room.

- If you hear or see something suspicious, call the police immediately. Dial 9-1-1 for an emergency, or (816) 235-1515 if it is a non-emergency.

Maintenance of Campus Facilities

The campus facilities are maintained by UMKC Campus Facilities Management and patrolled by the University Police. Campus Facilities Management maintains the University buildings, grounds and roadways with a concern for safety and security. They maintain their own key shop staffed by certified locksmiths. They inspect campus facilities regularly, make repairs affecting safety and security, and respond to reports of potential safety and security hazards, such as broken windows, locks, and lighting. The police officers submit work orders for repair, recommend the trimming of shrubbery for safety reasons and conduct periodic lighting surveys. Officers report the need for replacement of lights and any other physical hazards. Periodic crime prevention surveys are conducted when a crime occurs or upon the physical change of office space and equipment when requested by an administrator. Call Campus Facilities Management, (816) 235-1354, during business hours or the University Police after hours to report any safety or security hazard in or around campus buildings, grounds or roadways.

UMKC Campus and Emergency Telephone Locations

Blue light emergency telephones (EMER) are located strategically throughout campus. These phones provide the caller a direct line to the UMKC Police. The dispatcher simultaneously receives a display indicating the location of the caller. The elevator telephones (ELEV) work in the same manner. The UMKC Police Department encourages everyone to become familiar with the location of these phones and to report any suspicious activities.

TYPE	LOCATION		TYPE	LOCATION
EMER	New Health Sci. Bldg. South		EMER	Flarsheim Hall East
EMER	New Health Sci. Bldg. North		EMER	Med Parking 1st FI North
EMER	Oak Place Apts. - South		EMER	Med Parking 2nd FI North
EMER	Oak Place Apts. - North		EMER	Med Parking 3rd FI North
EMER	Johnson Hall - NW		EMER	Med Parking 4th FI North
EMER	PAC SW Entrance		EMER	Med Parking 5th FI North
EMER	S.A.S.S.		EMER	Med Parking 6th FI North
EMER	Fine Arts		EMER	Med Parking 2nd FI South
EMER	New Student Union		EMER	Med Parking 3rd FI South
EMER	Newcomb Hall		EMER	Med Parking 4th FI South
EMER	Education		EMER	Med Parking 5th FI South
EMER	Grant Hall		EMER	Med Parking 6th FI South
EMER	Cockefair Hall		EMER	Med Parking 7th FI South
EMER	Chemistry/Biology		EMER	Med Parking 1st FI South
EMER	Old Maintenance Bldg.		EMER	Med Parking 7th FI North
EMER	SRC		EMER	Rockhill Parking 4th FI N W
EMER	Bixby Lane Walk		EMER	Rockhill Parking 3rd FI N W
EMER	Bloch/Law		EMER	Rockhill Parking 2nd FI N W
EMER	5322 Troost		EMER	Rockhill Parking 1st FI N W
EMER	4747 Troost		EMER	Rockhill Parking 1st FI S E
EMER	4825 Troost Ft Dr		EMER	Rockhill Parking 1st FI N E
EMER	Dental Sidewalk		EMER	Rockhill Parking 2nd FI N E
EMER	MNL		EMER	Rockhill Parking 2nd FI S E
EMER	PAC 1st FI		EMER	Rockhill Parking 3rd FI N E
EMER	PAC 2nd FL		EMER	Rockhill Parking 3rd FI S E
EMER	SRC Swimming Pool		EMER	Rockhill Parking 4th FI S E
EMER	SRC Control Desk		EMER	Rockhill Parking 4th FI N E
EMER	SRC North		EMER	Rockhill Parking 5th FI S E
EMER	SRC Men's Student Locker Rm		EMER	Rockhill Parking 5th FI N E
EMER	Area 26 Oak St Dr		EMER	Rockhill Parking 5th FI N W
EMER	FH West		EMER	SRC North--28A NW
EMER	SRC Men's Lcker Rm Hdcp access		EMER	SRC WMs Lcker Rm Hdcp access

TYPE	LOCATION		TYPE	LOCATION
ELEV	4747 Troost		ELEV	Law School
ELEV	4825 Troost		ELEV	Manheim Hall
ELEV	Admin Center Main East		ELEV	Med Parking
ELEV	Admin Center Main West		ELEV	Med School East
ELEV	Admin Center North		ELEV	Med School Service
ELEV	Admin Center South		ELEV	Med School West
ELEV	Biology		ELEV	MN Library
ELEV	Bloch School		ELEV	MN Library (Staff)
ELEV	Chemistry		ELEV	Newcomb Hall
ELEV	Cherry St Res Hall		ELEV	Oak Place Apts. North
ELEV	Cockefair Hall		ELEV	Oak St Res Hall North
ELEV	Dental School East		ELEV	Oak St Res Hall South
ELEV	Dental School West		ELEV	PAC
ELEV	Education		ELEV	Rockhill Parking
ELEV	Fine Arts		ELEV	Royall Hall
ELEV	Flarsheim Hall		ELEV	Scofield Hall
ELEV	Grant Hall		ELEV	SRC
ELEV	Haag Hall		ELEV	Student Union East
ELEV	Health Sci. Bldg. (Service)		ELEV	Student Union West
ELEV	Health Sci. Bldg. East		ELEV	U-Center
ELEV	Health Sci. Bldg. West		ELEV	University Way East
ELEV	Johnson Hall		ELEV	University Way West
ELEV	Katz Hall		ELEV	Old Bookstore
ELEV	Oak Place Apts. South		ELEV	Toy Museum

Important UMKC Phone Numbers

Emergency	9-1-1
Police Department	(816) 235-1515
Parking Operations	(816) 235-5256
Counseling Center	(816) 235-1635
Student Health & Wellness	(816) 235-6133
Women's Center	(816) 235-1638
Student Housing	(816) 235-8840
Student Involvement Office	(816) 235-1407
HelpLine	(816) 235-2222

Victim's Rights

For information on victim's rights, go to the Missouri Attorney General's website at:

<http://www.ago.mo.gov/crimevictims/crimevictims.htm>

UMKC Alert – Emergency Notification

To learn about and sign up for the UMKC Emergency Notification System, go to:

<http://www.umkc.edu/umkcalert/default.asp>

Annual Crime Statistics

The following pages contain crime statistics from past years. The definitions list, following these statistics, was used to determine these crime statistics.

These numbers reflect crimes reported to the UMKC Police Department and numbers reported to the UMKC Police Department by Local Law Enforcement (Kansas City Police Department) and campus security authorities (Student Involvement, Residential Life, and other campus groups).

Crimes are recorded in the calendar year they were reported. This report does not use a map to depict its campus, non-campus buildings or property, and public property areas.

Hate Crimes

2010: One on-campus property damage incident characterized by sexual orientation bias.

2009: No hate crimes reported.

2008: One on-campus residential facility simple assault incident characterized by sexual orientation bias.

2010 Crime Statistics

Total Crimes								Non-Campus							
Reported For:								Building or Property							
Offense Type (includes attempts)	UMKC Campus						Sub- Total	Reported to						Sub- Total	
	UMKC Police		Non-Police		Local Police			UMKC Police		Non-Police		Local Police			
	Volker	HSC	Volker	HSC	Volker	HSC		Volker	HSC	Volker	HSC	Volker	HSC		
Murder	0	0	0	0	0	0	0	0	0	0	0	0	0	0	
Manslaughter	0	0	0	0	0	0	0	0	0	0	0	0	0	0	
Forcible Sex Offenses	0	0	0	0	0	0	0	0	0	0	0	0	0	0	
Non-Forcible Sex Offenses	0	0	0	0	0	0	0	0	0	0	0	0	0	0	
Robbery	0	0	0	0	0	0	0	0	0	0	0	0	0	0	
Aggravated Assault	0	0	0	0	0	0	0	0	0	0	0	0	0	0	
Burglary	29	5	0	0	4	0	38	0	0	0	0	0	0	0	
Motor Vehicle Theft	3	0	0	0	4	0	7	0	0	0	0	0	0	0	
Arson	1	0	0	0	0	0	1	0	0	0	0	0	0	0	
Other Causing Bodily Injury	0	0	0	0	0	0	0	0	0	0	0	0	0	0	
Hate Crimes (by prejudices)															
Race	0	0	0	0	0	0	0	0	0	0	0	0	0	0	
Gender	0	0	0	0	0	0	0	0	0	0	0	0	0	0	
Religion	0	0	0	0	0	0	0	0	0	0	0	0	0	0	
Sex Orientation	1	0	0	0	0	0	1	0	0	0	0	0	0	0	
Ethnicity	0	0	0	0	0	0	0	0	0	0	0	0	0	0	
Disability	0	0	0	0	0	0	0	0	0	0	0	0	0	0	

Liquor Law Violations														
Arrest	0	0	0	0	0	0	0	0	0	0	0	0	0	0
Referral	90	0	0	0	0	0	90	0	0	0	0	0	0	0
Drug Law Violations														
Arrest	2	0	0	0	0	0	2	0	0	0	0	0	0	0
Referral	3	0	0	0	0	0	3	0	0	0	0	0	0	0
Weapons Law Violations														
Arrest	1	0	0	0	0	0	1	0	0	0	0	0	0	0
Referral	0	0	0	0	0	0	0	0	0	0	0	0	0	0

Total Crimes								On Campus				
Reported For:	Public Property						Sub- Total	2010 GRAND TOTAL	Residential Only			SECTION TOTAL
Offense Type (includes attempts)	Reported to								Reported to			
	UMKC Police		Non- Police		Local Police				UMKC Police	Non- Police	Local Police	
	Volker	HSC	Volker	HSC	Volker	HSC						
Murder	0	0	0	0	0	0	0	0	0	0	0	
Manslaughter	0	0	0	0	0	0	0	0	0	0	0	
Forcible Sex Offenses	0	0	0	0	0	0	0	0	0	0	0	
Non-Forcible Sex Offenses	0	0	0	0	0	0	0	0	0	0	0	
Robbery	0	0	0	0	1	0	1	1	0	0	0	
Aggravated Assault	0	0	0	0	0	0	0	0	0	0	0	
Burglary	0	0	0	0	0	0	0	38	12	0	0	12
Motor Vehicle Theft	0	0	0	0	0	0	0	7	0	0	0	0
Arson	0	0	0	0	0	0	0	1	1	0	0	1
Other Causing Bodily Injury	0	0	0	0	0	0	0	0	0	0	0	0
Hate Crimes (by prejudices)												
Race	0	0	0	0	0	0	0	0	0	0	0	0
Gender	0	0	0	0	0	0	0	0	0	0	0	0
Religion	0	0	0	0	0	0	0	0	0	0	0	0
Sex Orientation	0	0	0	0	0	0	0	1	0	0	0	0
Ethnicity	0	0	0	0	0	0	0	0	0	0	0	0
Disability	0	0	0	0	0	0	0	0	0	0	0	0
Liquor Law Violations												
Arrest	0	0	0	0	0	0	0	0	0	0	0	0
Referral	0	0	0	0	0	0	0	90	90	0	0	90
Drug Law Violations												
Arrest	0	0	0	0	0	0	0	2	2	0	0	2
Referral	0	0	0	0	0	0	0	3	3	0	0	3
Weapons Law Violations												
Arrest	0	0	0	0	0	0	0	1	1	0	0	1
Referral	0	0	0	0	0	0	0	0	0	0	0	0

2009 Crime Statistics

Total Crimes								Non-Campus							
Reported For:	UMKC Campus							Building or Property							
Offense Type (includes attempts)	Reported to						Sub- Total	Reported to						Sub- Total	
	UMKC Police		Non- Police		Local Police			UMKC Police		Non- Police		Local Police			
	Volker	HSC	Volker	HSC	Volker	HSC		Volker	HSC	Volker	HSC	Volker	HSC		
Murder	0	0	0	0	0	0	0	0	0	0	0	0	0	0	
Manslaughter	0	0	0	0	0	0	0	0	0	0	0	0	0	0	
Forcible Sex Offenses	1	0	0	0	0	0	1	0	0	0	0	0	0	0	
Non-Forcible Sex Offenses	0	0	0	0	0	0	0	0	0	0	0	0	0	0	
Robbery	3	0	0	0	0	0	3	0	0	0	0	0	0	0	
Aggravated Assault	0	0	0	0	0	0	0	0	0	0	0	0	0	0	
Burglary	29	8	0	0	0	0	37	0	0	0	0	0	0	0	
Motor Vehicle Theft	3	0	0	0	0	0	3	0	0	0	0	0	0	0	
Arson	0	0	0	0	0	0	0	0	0	0	0	0	0	0	
Other Causing Bodily Injury	12	0	2	0	0	0	14	0	0	0	0	0	0	0	
Hate Crimes (by prejudices)															
Race	0	0	0	0	0	0	0	0	0	0	0	0	0	0	
Gender	0	0	0	0	0	0	0	0	0	0	0	0	0	0	
Religion	0	0	0	0	0	0	0	0	0	0	0	0	0	0	
Sex Orientation	0	0	0	0	0	0	0	0	0	0	0	0	0	0	
Ethnicity	0	0	0	0	0	0	0	0	0	0	0	0	0	0	
Disability	0	0	0	0	0	0	0	0	0	0	0	0	0	0	

Liquor Law Violations														
Arrest	1	0	0	0	0	0	1	0	0	0	0	0	0	0
Referral	55	0	0	0	0	0	55	0	0	0	0	0	0	0
Drug Law Violations														
Arrest	2	0	0	0	0	0	2	0	0	0	0	0	0	0
Referral	9	0	0	0	0	0	9	0	0	0	0	0	0	0
Weapons Law Violations														
Arrest	1	0	0	0	0	0	1	0	0	0	0	0	0	0
Referral	0	0	0	0	0	0	0	0	0	0	0	0	0	0

Total Crimes								On Campus				
Reported For:		Public Property						2009 GRAND TOTAL	Residential Only			
Offense Type (includes attempts)	Reported to						Sub- Total		Reported to			SECTION TOTAL
	UMKC Police		Non- Police		Local Police				UMKC Police	Non- Police	Local Police	
	Volker	HSC	Volker	HSC	Volker	HSC						
Murder	0	0	0	0	0	0	0	0	0	0	0	0
Manslaughter	0	0	0	0	0	0	0	0	0	0	0	0
Forcible Sex Offenses	0	0	0	0	0	0	0	1	1	0	0	1
Non-Forcible Sex Offenses	0	0	0	0	0	0	0	0	0	0	0	0
Robbery	0	0	0	0	2	0	2	5	0	0	0	0
Aggravated Assault	0	0	0	0	1	0	1	1	0	0	0	0
Burglary	0	0	0	0	0	0	0	37	20	0	0	20
Motor Vehicle Theft	0	0	0	0	3	0	3	6	0	0	0	0
Arson	0	0	0	0	0	0	0	0	0	0	0	0
Other Causing Bodily Injury	1	0	0	0	0	0	1	15	4	2	0	6
Hate Crimes (by prejudices)												
Race	0	0	0	0	0	0	0	0	0	0	0	0
Gender	0	0	0	0	0	0	0	0	0	0	0	0
Religion	0	0	0	0	0	0	0	0	0	0	0	0
Sex Orientation	0	0	0	0	0	0	0	0	0	0	0	0
Ethnicity	0	0	0	0	0	0	0	0	0	0	0	0
Disability	0	0	0	0	0	0	0	0	0	0	0	0
Liquor Law Violations												
Arrest	2	0	0	0	0	0	2	3	1	0	0	1
Referral	0	0	0	0	0	0	0	55	55	0	0	55
Drug Law Violations												
Arrest	0	0	0	0	0	0	0	2	2	0	0	2
Referral	0	0	0	0	0	0	0	9	9	0	0	9
Weapons Law Violations												
Arrest	1	0	0	0	0	0	1	2	0	0	0	0
Referral	0	0	0	0	0	0	0	0	0	0	0	0

2008 Crime Statistics

Total Crimes	Non-Campus													
	UMKC Campus							Building or Property						
Reported For:	Reported to						Sub- Total	Reported to						Sub- Total
Offense Type (includes attempts)	UMKC Police		Non- Police		Local Police			UMKC Police		Non- Police		Local Police		
	Volker	HSC	Volker	HSC	Volker	HSC	Volker	HSC	Volker	HSC	Volker	HSC		
Murder	0	0	0	0	0	0	0	0	0	0	0	0	0	
Manslaughter	0	0	0	0	0	0	0	0	0	0	0	0	0	
Forcible Sex Offenses	0	0	0	0	0	0	0	0	0	0	0	0	0	
Non-Forcible Sex Offenses	0	0	0	0	0	0	0	0	0	0	0	0	0	
Robbery	3	0	0	0	1	0	4	0	0	0	0	0	0	
Aggravated Assault	1	0	0	0	0	0	1	0	0	0	0	0	0	
Burglary	20	0	0	0	4	0	24	0	0	0	0	0	0	
Motor Vehicle Theft	5	0	0	0	0	0	5	0	0	0	0	0	0	
Arson	0	0	0	0	0	0	0	0	0	0	0	0	0	
Hate Crimes (by prejudices)														
Race	0	0	0	0	0	0	0	0	0	0	0	0	0	
Gender	0	0	0	0	0	0	0	0	0	0	0	0	0	
Religion	0	0	0	0	0	0	0	0	0	0	0	0	0	
Sex Orientation	1	0	0	0	0	0	1	0	0	0	0	0	0	
Ethnicity	0	0	0	0	0	0	0	0	0	0	0	0	0	
Disability	0	0	0	0	0	0	0	0	0	0	0	0	0	

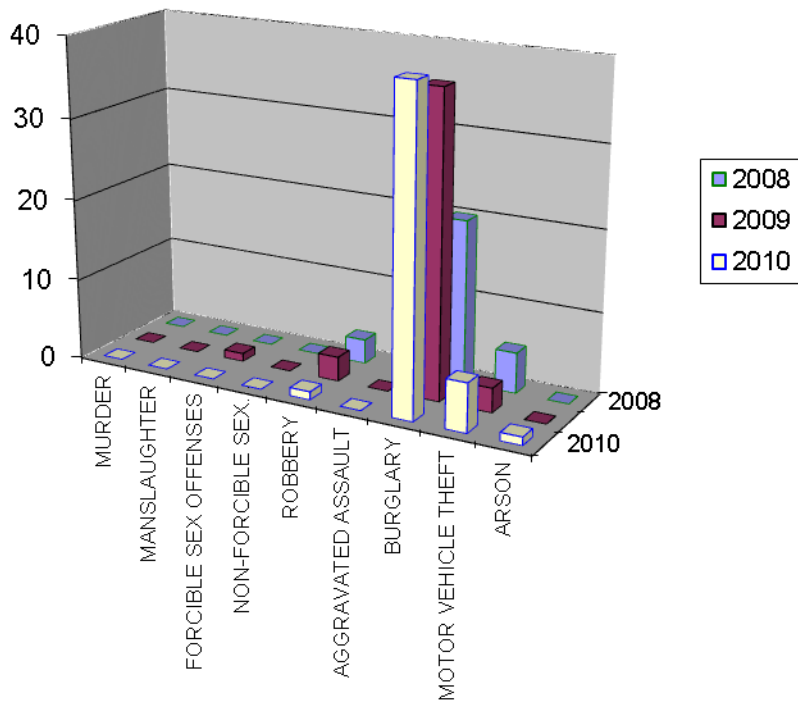
Liquor Law Violations													
Arrest	2	0	0	0	0	0	2	0	0	0	0	0	0
Referral	0	0	66	0	0	0	66	0	0	0	0	0	0
Drug Law Violations													
Arrest	3	0	0	0	0	0	3	0	0	0	0	0	0
Referral	0	0	3	0	0	0	3	0	0	0	0	0	0
Weapons Law Violations													
Arrest	0	0	0	0	0	0	0	0	0	0	0	0	0
Referral	0	0	0	0	0	0	0	0	0	0	0	0	0

Total Crimes Reported For:	Public Property						Sub- Total	2008 GRAND TOTAL	On Campus Residential Only			
	Reported to								Reported to			SECTION TOTAL
	UMKC Police		Non- Police		Local Police				UMKC Police	Non- Police	Local Police	
	Volker	HSC	Volker	HSC	Volker	HSC						
Murder	0	0	0	0	0	0	0	0	0	0	0	
Manslaughter	0	0	0	0	0	0	0	0	0	0	0	
Forcible Sex Offenses	0	0	0	0	0	0	0	0	0	0	0	
Non-Forcible Sex Offenses	0	0	0	0	0	0	0	0	0	0	0	
Robbery	0	0	0	0	1	0	1	5	1	0	0	1
Aggravated Assault	0	0	0	0	0	0	0	1	1	0	0	1
Burglary	0	0	0	0	0	0	0	24	4	0	0	4
Motor Vehicle Theft	0	0	0	0	3	0	3	8	0	0	0	0
Arson	0	0	0	0	0	0	0	0	0	0	0	0
Hate Crimes (by prejudices)												
Race	0	0	0	0	0	0	0	0	0	0	0	0
Gender	0	0	0	0	0	0	0	0	0	0	0	0
Religion	0	0	0	0	0	0	0	0	0	0	0	0
Sex Orientation	0	0	0	0	0	0	0	1	1	0	0	1
Ethnicity	0	0	0	0	0	0	0	0	0	0	0	0
Disability	0	0	0	0	0	0	0	0	0	0	0	0
Liquor Law Violations												
Arrest	5	0	0	0	0	0	5	7	2	0	0	2
Referral	0	0	0	0	0	0	0	66	0	66	0	66
Drug Law Violations												
Arrest	4	0	0	0	0	0	4	7	1	0	0	1
Referral	0	0	0	0	0	0	0	3	3	0	0	3
Weapons Law Violations												
Arrest	0	0	0	0	0	0	0	0	0	0	0	0
Referral	0	0	0	0	0	0	0	0	0	0	0	0

CRIME ON CAMPUS COMPARISON

	<i>2008</i>	<i>2009</i>	<i>2010</i>
MURDER	0	0	0
MANSLAUGHTER	0	0	0
FORCIBLE SEX OFFENSES	0	1	0
NON-FORCIBLE SEX OFFENSES	0	0	0
ROBBERY	3	3	1
AGGRAVATED ASSAULT	1	0	0
BURGLARY	20	37	39
MOTOR VEHICLE THEFT	5	3	6
ARSON	0	0	1

CLERY CRIME COMPARISON



Crime Definitions

Criminal Homicide-Murder and Non-negligent Manslaughter – The willful (non-negligent) killing of one human being by another.

Criminal Homicide-Manslaughter by Negligence – The killing of another person through gross negligence.

Sex Offenses-Forcible - Any sexual act directed against another person, forcibly and/or against that person's will; or not forcibly or against the person's will where the victim is incapable of giving consent.

Forcible sex offenses include:

A. Forcible Rape - The carnal knowledge of a person, forcibly and/or against that person's will; or not forcibly or against the person's will where the victim is incapable of giving consent because of his/her temporary or permanent mental or physical incapacity (or because of his/her youth).

B. Forcible Sodomy - Oral or anal sexual intercourse with another person, forcibly and/or against that person's will; or not forcibly against the person's will where the victim is incapable of giving consent because of his/her youth or because of his/her temporary or permanent mental or physical incapacity.

C. Sexual Assault with an Object - The use of an object or instrument to unlawfully penetrate, however slightly, the genital or anal opening of the body of another person, forcibly and/or against that person's will; or not forcibly or against the person's will where the victim is incapable of giving consent because of his/her youth or because of his/her temporary or permanent mental or physical incapacity.

D. Forcible Fondling - The touching of the private body parts of another person for the purpose of sexual gratification, forcibly and/or against that person's will; or, not forcibly or against the person's will where the victim is incapable of giving consent because of his/her youth or because of his/her temporary or permanent mental incapacity.

Sex Offenses-Non-forcible - Unlawful, non-forcible intercourse.

Non-forcible sex offenses include:

A. Incest - Non-forcible sexual intercourse between persons who are related to each other within the degrees wherein marriage is prohibited by law.

B. Statutory Rape - Non-forcible sexual intercourse with a person who is under the statutory age of consent.

Robbery - The taking, or attempted taking, of anything of value from the care, custody or control of a person or persons by force or threat of force or violence and/or by putting the victim in fear.

Aggravated Assault – An unlawful attack by one person upon another for the purpose of inflicting severe or aggravated bodily injury. This type of assault usually is accompanied by the use of a weapon

or by means likely to produce death or great bodily harm. It is not necessary that the injury result from an aggravated assault when a gun, knife or other weapon is used which could and probably would result in serious personal injury if the crime were successfully completed.

Burglary - The unlawful entry of a structure to commit a felony or theft. For reporting purposes this definition includes: unlawful entry with intent to commit a larceny or felony; breaking and entering with intent to commit a larceny; housebreaking; safecracking; and all attempts to commit any of the aforementioned.

Motor Vehicle Theft - The theft or attempted theft of a motor vehicle. (Includes all cases where automobiles are taken by persons not having lawful access even though the vehicles are later abandoned, including joyriding.)

Arson - Any willful or malicious burning or attempt to burn, with or without intent to defraud, a dwelling, house, public building, motor vehicle or aircraft, personal property of another, etc.

Liquor Law Violations - Violations of laws or ordinances prohibiting: the manufacture, sale, purchase, transporting, furnishing, possessing of intoxicating liquor; maintaining unlawful drinking places; bootlegging; operating a still; furnishing liquor to a minor or intemperate person; using a vehicle for illegal transportation of liquor; drinking on a train or public conveyance; and all attempts to commit any of the aforementioned. (Drunkenness and driving under the influence are not included in this definition.)

Drug Abuse Violations - Violations of State and local laws relating to the unlawful possession, sale, use, growing, manufacturing, and making of narcotic drugs. The relevant substances include: opium or cocaine and their derivatives (morphine, heroin, codeine); marijuana; synthetic narcotics (Demerol, methadone); and dangerous non-narcotic drugs (barbiturates, Benzedrine).

Weapons Possessions - The violation of laws or ordinances dealing with weapon offenses, regulatory in nature, such as: manufacture, sale, or possession of deadly weapons; carrying deadly weapons, concealed or openly; furnishing deadly weapons to minors; aliens possessing deadly weapons; and all attempts to commit any of the aforementioned explosives.

Clery Act Hate Crime Definitions:

Larceny-Theft: The unlawful taking, carrying, leading, or riding away of property from the possession or constructive possession of another. (Note: Constructive possession is defined by Black's Law Dictionary, 6th ed. as "where one does not have physical custody or possession, but is in a position to exercise dominion or control over a thing.")

- **Pocket-picking:** The theft of articles from another person's physical possession by stealth where the victim usually does not become immediately aware of the theft.
- **Purse-snatching:** The grabbing or snatching of a purse, handbag, etc., from the physical possession of another person.
- **Shoplifting:** The theft, by someone other than an employee of the victim, of goods or merchandise exposed for sale.

- **Theft From Building:** A theft from within a building which is either open to the general public or where the offender has legal access.
- **Theft From Coin Operated Machine or Device:** A theft from a machine or device which is operated or activated by the use of coins.
- **Theft From Motor Vehicle (Except "Theft of Motor Vehicle Parts or Accessories"):** The theft of articles from a motor vehicle, whether locked or unlocked.
- **Theft of Motor Vehicle Parts or Accessories:** The theft of any part or accessory affixed to the interior or exterior of a motor vehicle in a manner which would make the item an attachment of the vehicle, or necessary for its operation.
- **All Other Larceny:** All thefts which do not fit any of the definitions of the specific subcategories of Larceny/Theft listed above.

Simple Assault: An unlawful physical attack by one person upon another where neither the offender displays a weapon, nor the victim suffers obvious severe or aggravated bodily injury involving apparent broken bones, loss of teeth, possible internal injury, severe laceration, or loss of consciousness.

Intimidation: To unlawfully place another person in reasonable fear of bodily harm through the use of threatening words and/or other conduct, but without displaying a weapon or subjecting the victim to actual physical attack.

Destruction/Damage/Vandalism of Property (Except "Arson"): To willfully or maliciously destroy, damage, deface, or otherwise injure real or personal property without the consent of the owner or the person having custody or control of it.

Geography Definitions from the Clery Act

On Campus

Any building or property owned or controlled by an institution within the same reasonably contiguous geographic area and used by the institution in direct support of, or in a manner related to, the institution's educational purposes, including residence halls; and any building or property that is within or reasonably contiguous to paragraph (1) of this definition, that is owned by the institution but controlled by another person, is frequently used by students, and supports institutional purposes (such as a food or other retail vendor).

A Non-Campus Building or Property

Any building or property owned or controlled by a student organization that is officially recognized by the institution; or any building or property owned or controlled by an institution that is used in direct support of, or in relation to, the institution's educational purposes, is frequently used by students, and is not within the same reasonably contiguous geographic area of the institution.

On Public Property

All public property, including thoroughfares, streets, sidewalks, and parking facilities, that is within the campus, or immediately adjacent to and accessible from the campus.

Campus Fire Safety

Student Housing Description

All Student Housing at UMKC is located on the Volker Campus. This includes Oak Street Residence Hall, Johnson Hall, and Oak Place Apartments. The Oak Place Apartments are separated into two towers the North Tower and the South Tower. The Kansas City Fire Department (KCFD) protects UMKC and KCFD is notified by the UMKC Police Dispatcher in the event of a fire.

Fire Safety Systems

- Automatic Sprinkler Systems throughout
- Horn and Strobe located in common areas as well as each sleeping space
- Automatic Releasing Fire Doors protecting corridors
- Fire and Smoke Detection System that is monitored by UMKC Police **
- Portable Fire Extinguishers located throughout the facility

**Oak Place Apartments were monitored by Simplex Grinnell in 2009

Student Housing Policies

Appliances- Appliances that may cause a fire or safety hazard may not be used in student rooms. These include: hot-surface appliances such as hot plates, space heaters, popcorn poppers, immersion coils, toasters, toaster ovens, coffee makers, George Foreman grills and any other cooking appliances.

Extension Cords- An extension cord must be UL approved, 16 gauge and not exceed an un-spliced length of six feet with a polarized plug and a single outlet; it may not be placed under floor coverings or furnishings and may not be secured by penetrating the insulation.

Open Flames- Items which require an open flame to operate or which produce heat (e.g., Bunsen burners, lighted candles, alcohol burners, George Foreman grills) are not allowed.

Smoking- The complexes are smoke-free buildings. Smoking is not permitted in any part of the complexes, including student rooms or apartments.

Evacuation Procedures

In the case of a fire alarm sounding, residents and guests are required to evacuate the building. If you see smoke in the hallways, breezeways, or rooms, keep low to the ground as you move to the nearest exit. Once you are out of the building, move away from the building and do not block emergency personnel and equipment. You may not re-enter the building until you receive notification from the local officials or staff.

Fire Logs

A fire log is available for review during business hours at the University of Missouri-Kansas City Department of Environmental Health and Safety. The information in the fire log includes information about fires that occur in residential facilities, including the nature, date, time, and general location. An electronic or hard copy of the fire log can be made available upon request to Fire Marshal Jacob Gaughran. Please e-mail your request to gaughranj@umkc.edu or call (816) 235-6095.

Regular Mandatory Fire Drills

There are four supervised fire evacuation drills per student housing building scheduled annually. These drills are conducted and evaluated by the UMKC Fire Marshal.

Training

The Fire Safety Division of Environmental Health and Safety Department offers general fire safety trainings and information as well as hands on Fire Extinguisher Training. Additional training may be developed as needed to help educate the campus community on Fire and Life Safety.

Plans for Future Improvements

The Fire Safety Division, Residential Life, and Campus Facilities Management work to keep all Student Housing at UMKC in accordance with International Fire Code. The Fire Safety Division continually evaluates the fire safety equipment and safety procedures across the campus. Changes and additions may be made as necessary to ensure safety.

Fire Statistics

The following page contains fire statistics from past years. The definitions list, following after these statistics, was used to determine these fire statistics. The numbers reflect fires reported to the UMKC Fire Safety Division, UMKC Police Department and other campus authorities (Residential Life & other campus groups.)

2010 Fire Statistics

Location	Date	Time	Reported Incident	Cause	Injury	Death	Value of Damage
Oak St Dorm	01/17/10	11:46	Alarm	Cooking (alarm/ no flame)	None	None	None
Johnson Hall	02/01/10	21:35	Alarm	Cooking (alarm/ no flame)	None	None	None
Johnson Hall	03/11/10	10:47	Alarm	Cooking (alarm/ no flame)	None	None	None
Oak St Dorm	03/20/10	20:58	Alarm	Cooking (alarm/ no flame)	None	None	None
Oak St Dorm	04/16/10	04:05	Fire	Arson	None	None	\$51,000
Johnson Hall	04/21/10	00:06	Alarm	Electrical (alarm/ no flame)	None	None	None
Oak Place Apt	05/31/10	22:55	Fire	Cooking	None	None	\$350
Oak Place Apt	08/19/10	11:45	Fire	Cooking	None	None	\$17,800
Johnson Hall	08/26/10	09:38	Alarm	Cooking (alarm/ no flame)	None	None	None

2009 Fire Statistics

Location	Date	Time	Reported Incident	Cause	Injury	Death	Value of Damage
Oak Place Apt	01/19/09	15:37	Alarm	Cooking (alarm/ no flame)	None	None	None
Oak Place Apt	03/05/09	17:51	Fire	Cooking	0	0	0
Oak St Dorm	07/22/09	11:46	Alarm	Cooking (alarm/ no flame)	None	None	None
Johnson Hall	08/29/09	00:17	Alarm	Cooking (alarm/ no flame)	None	None	None
Johnson Hall	09/12/09	05:01	Alarm	Cooking (alarm/ no flame)	None	None	None
Oak St Dorm	09/15/09	21:03	Alarm	Cooking (alarm/ no flame)	None	None	None
Johnson Hall	09/23/09	19:37	Alarm	Fog machine set off alarm	None	None	None
Oak St Dorm	10/01/09	12:45	Alarm	Cooking (alarm/ no flame)	None	None	None
Johnson Hall	10/04/09	15:26	Alarm	Candle	None	None	None
Johnson Hall	12/03/09	19:10	Alarm	Fog machine set off alarm	None	None	None
Oak Place Apt	12/06/09	05:15	Fire	Candle	0	0	\$3,664

Fire Reporting Definitions

Cause of fire- The factor or factors that give rise to a fire. The causal factor may be, but is not limited to, the result of an intentional or unintentional action, mechanical failure, or act of nature.

Fire- Any instance of open flame or other burning in a place not intended to contain the burning or in an uncontrolled manner.

Fire drill- A supervised practice of a mandatory evacuation of a building for a fire.

Fire-related injury- Any instance in which a person is injured as a result of a fire, including an injury sustained from a natural or accidental cause, while involved in fire control, attempting rescue, or escaping from the dangers of the fire. The term “person” may include students, employees, visitors, firefighters, or any other individuals.

Fire-related death- Any instance in which a person:

- (1) Is killed as a result of a fire, including death resulting from a natural or accidental cause while involved in fire control, attempting rescue, or escaping from the dangers of a fire; or
- (2) Dies within one year of injuries sustained as a result of the fire.

Fire safety system- Any mechanism or system related to the detection of a fire, the warning resulting from a fire, or the control of a fire. This may include sprinkler systems or other fire extinguishing systems, fire detection devices, stand-alone smoke alarms, devices that alert one to the presence of a fire, (such as horns, bells, or strobe lights), smoke-control and reduction mechanisms, and fire doors and walls that reduce the spread of a fire.

Value of property damage- The estimated value of the loss of the structure and contents, in terms of the cost of replacement in similar type and quantity. This estimate should include contents damaged by fire, and related damages caused by smoke, water, and overhaul; however, it does not include indirect loss, such as business interruption.