

UMKC IS ADVISORY COUNCIL



Wednesday, October 13th, 2021

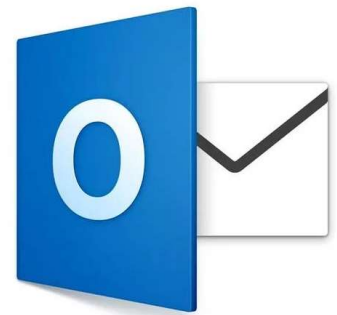


WELCOME

1

Outlook 365 Updates

Migration Project, Policy Changes &
Security Enhancements





Office 365 Security Tools



Data Loss Prevention (DLP) - will check for SSNs and other secure information and will automatically encrypt outbound messages containing this information such that recipients must use O365 to view the email



Communication to Faculty and Staff sent out on September 16th, 2021 and posted in uMatters and RooConnection.



Enabled for all Faculty, Staff, and Students as of September 30th. Notifications turned on October 12th.



FAQ: <https://www.umsystem.edu/ums/is/new-security-usability-features>





Outlook 365

EMAIL POLICY CHANGES

- ✓ Policy approved by Records Management, Legal, HR, and UM IT

[Email Modernization | University of Missouri System](#)



[Email Management Policy](#)



[Electronic Mail Use and Management Procedures](#)

Implementation of new policies are still in-progress

EXCHANGE ONLINE MIGRATION PROJECT COMPLETION

- ✓ Over 50,000 mailboxes migrated to Office 365





Outlook 365 Email Policies

IMPLEMENTED



Strict enforcement of email quotas – 25GB



Removal of highly sensitive data (DCL4) from their email accounts in a reasonable timeframe (10 days)



36,000 former student accounts have been deprovisioned or are in the process of being deprovisioned.



Data Loss Prevention (DLP) enabled for all accounts on 9/30.

IN-PROGRESS

Auto deletion of emails – expected implementation end of calendar year.

- In inboxes and sent items folders after 5 years

- In “deleted items” after 30 days

- Any email moved to a subfolder will be untouched

IN-PROGRESS

More prompt deactivation and deletion of accounts post employment and enrollment.

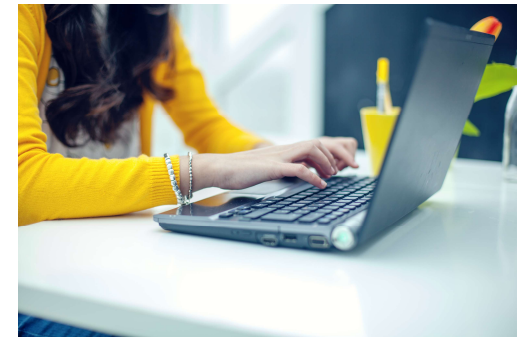
- Current retiree accounts are grandfathered

- Future retirees can submit a request to maintain their email account

2

Productivity Tools

Cloud Storage, Texting &
Digital Signage








Cloud Storage – UM System Current State

box

- Columbia has migrated from Box to OneDrive
- UMKC will have at least 1 more fiscal year of Box
- Current Box usage (~150TB) is very high

FUTURE CLOUD STORAGE STANDARDS

-  OneDrive, included as part of Microsoft 365
-  Google Drive, expected utilization on the faculty/student via Missouri Online
-  Box, continues to be UMKC standard





Cloud Storage – UMKC Next Steps

NEXT STEPS

- Committee to evaluate options to be formed in October. Representatives include IS leadership, technical experts, Faculty and Staff.
- Strategy determined by end of Calendar year.
- Updated documentation and FAQ to be created for both OneDrive and Google Drive.

HOW TO PREPARE

- Clean up any unused files.
- Review collaborated files and shared links, including any external links.





Texting – Cadence (Mongoose Research)



- Campus wide solution that provides unlimited texting, departments, and connections with Slate.
- IT funded this solution for campus
- Multiple groups already using or in pilot mode
 - ▽ Admissions
 - ▽ Bloch Launchpad
 - ▽ School of Law
 - ▽ Office of Student Involvement
- Integration with AzureAD for Single Sign On - in progress
- Contact the Technology Support Center if you want to use texting



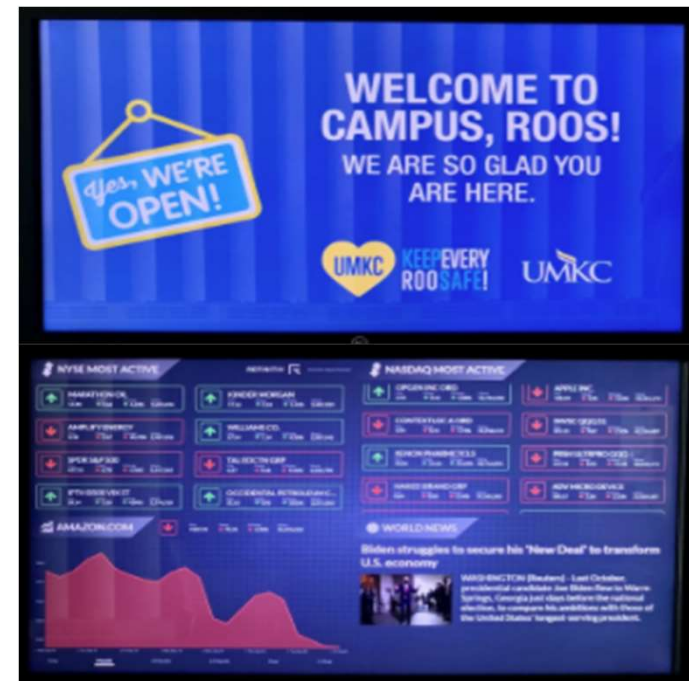
Digital Signage

RISE VISION

- Campus standard for low-cost digital signage solution
- Current projects include new signage at Admin Center, School of Law, and the School of Computing and Engineering
- www.umkc.edu/is/digitalsignage

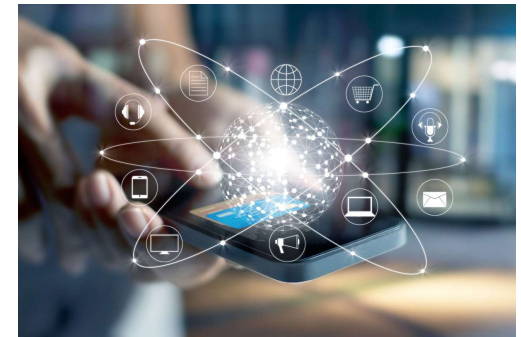
PANOSCAPE

Complex “video wall” signage currently being implemented in Plaster Free Enterprise and Research Center.



3

IT Updates





Security Operations Center (SOC)

Information Security Officers from all campuses created SOC to monitor, triage, and respond to many types of security incidents.

- Formed by all campuses in Spring of 2021
- Security events from all campuses are triaged
 - Abuse and spam reports, workstation malware, etc.
- Each campus provides staffing to ensure coverage 5 days a week
- Ensures timely review of security events and reports





Datacenter Disaster Recovery Planning/Testing

REAL-WORLD SIMULATED POWER TESTING BY IS AND CFM

- Power to both the AC and Newcomb Datacenters was removed, simulating an Evergy power outage
- UPS (Uninterruptible Power Supplies) immediately recognized the outage and turned on
- Within 1 minute of the outage the diesel generators kicked on and effectively replaced the Evergy building feed
- Yearly tests will be performed to ensure continued update of campus servers and resources





Campus Technology

Upgrades planned for (9) ILE classrooms to convert to new High Flex/Multi-Modality spaces over the next year.

- ▼ MNL 151, 451, 452
- ▼ Education 115, 118, 244
- ▼ Flarsheim 310
- ▼ Haag Hall 301
- ▼ Cockefair Hall 105

7 AC Conference Rooms scheduled

- ▼ Gilliam Park, Hyde Park, Brookside
- ▼ Loose Park, Swope Park
- ▼ Telepresence Room, Focus Room

Other Significant Projects

- ▼ AC digital signage
- ▼ Surveillance system upgrade
- ▼ MNL 3rd floor renovations
- ▼ SOM Media Center Remodel
- ▼ Bloch Heritage Hall renovations
- ▼ SCE PanoScape Signage, E-Sports, Machine Learning Lab, and ITAR





Guest Logins in One Canvas – Coming Soon

LAUNCHING TOWARD END OF YEAR

- As part of the One Canvas migration, UM System is implementing guest logins to Canvas via Cirrus Identity
- Guest logins supported from Gmail or Microsoft private accounts
- Canvas Catalog will enable Continuing Education to leverage the One Canvas platform
- More info and documentation to come later this fall

The screenshot shows the Canvas login page with the Canvas logo at the top. Below the logo are two login options:

- UMSYSTEM LOGIN**: Use this log in with your UMSystem credentials. Button: UMSystem log in
- GUEST LOGIN**: Coming soon Log in with guest access. Button: Guest log in

? Faculty Resources – Support Channels



HOW TO GET TECHNOLOGY

- ▶ ithelp.umkc.edu – links to password help, contact info, and FAQs
- ▶ cherwell.umsystem.edu/CherwellPortal/UMKCITPortal
- ▶ (816) 235-2000 – phone support
- ▶ Open 8-5, Monday – Friday



Accounts & Email



Campus Connectivity



Computer Labs & Printing



IT Policies & Safe Computing



Technology Help & Support



HOW TO GET ONLINE LEARNING HELP

- ▶ Canvas, Panopto, Proctoring, Exam Software, etc.
- ▶ teachingtools.umsystem.edu/support/home
- ▶ Email (General): teachingtools@umsystem.edu
- ▶ Email (Canvas): canvas@umsystem.edu
- ▶ Email (Panopto): Panopto@umsystem.edu
- ▶ (855) 675-0755 – phone support
- ▶ Open 10-4, Monday – Friday



Operating System Updates

WINDOWS 11

- Limited release from Microsoft on October 5th and running through Summer 2022.
- New features include a refreshed interface, enhanced windows snapping, and security/performance improvements.
- IS to develop new image and perform compatibility testing during Spring Semester with potential early adopters and during summer.
- Only 37% of UMKC computers have a recent enough CPU (3-4 years old) to run Windows 11.

MAC OS 12 (MONTEREY)

- Currently in beta but expected to be released this Fall



Workstation Replacement

PROGRAM INFO

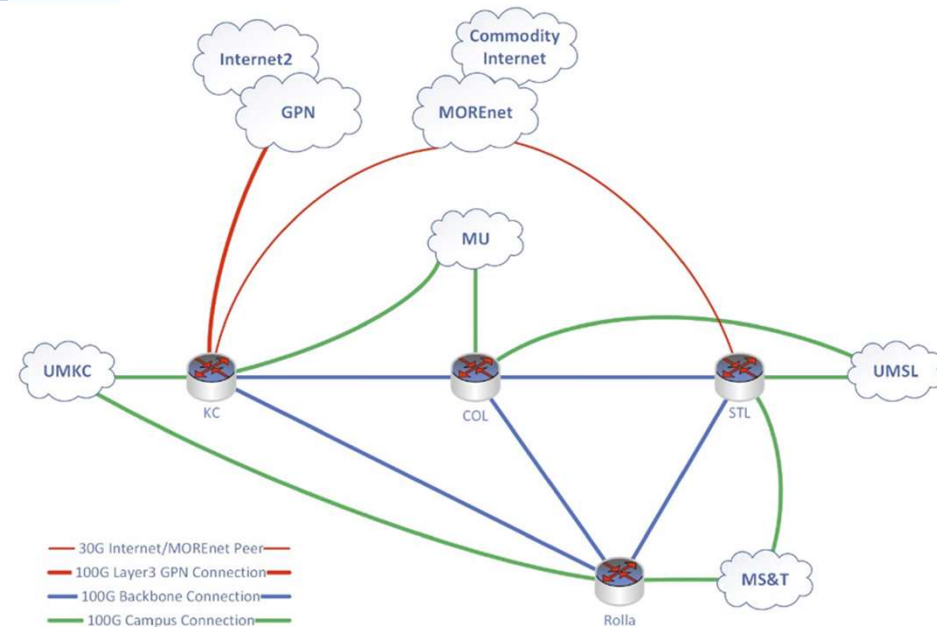
- Workstation Replacement Program goes live mid-November and closes mid-December
- Expected deployments to be delayed due to supply chain issues.
- Similar eligibility requirements and funding as previous years. \$250 IS Stipend for eligible workstations.
- Work and Teach at Home Bundles still available
- More info @ <https://wrp.umkc.edu>





Networking Update

- Partnered with MOREnet to replace the Intercampus Network and provide 100 Gbps connectivity to Internet2
- Upgraded UMKC Internet Routers increasing off-campus connectivity to 200 Gbps
- Made network resiliency improvements with geographic diversity for critical devices
 - Internet Routers, Campus Edge, & Data Center Firewalls
 - Research data center in Robert W. Plaster Free Enterprise and Research Center
- Replacing wireless controllers
 - Increased performance of Wi-Fi 6 access points
 - Greater flexibility for “Smart” device and “Internet of Things” connectivity
- Replacing 215 existing access points with newest Wi-Fi 6 access points





THANKS!

Any questions?